

		5		4		T21N		3	
TSF2 480	TSF2 479	TSF2 444	TSF2 443	TSF2 408	TSF2 407				
TSF2 482	TSF2 481	TSF2 446	TSF2 445	TSF2 410	TSF2 409				
TSF2 484	TSF2 483	TSF2 448	TSF2 447	TSF2 412	TSF2 411				
TSF2 486	TSF2 485	TSF2 450	TSF2 449	TSF2 414	TSF2 413				
TSF2 488	TSF2 487	TSF2 452	TSF2 451	TSF2 416	TSF2 415				
TSF2 490	TSF2 489	TSF2 454	TSF2 453	TSF2 418	TSF2 417				
TSF2 492	TSF2 491	TSF2 456	TSF2 455	TSF2 420	TSF2 419				
TSF2 494	TSF2 493	TSF2 458	TSF2 457	TSF2 422	TSF2 421				
TSF2 496	TSF2 495	TSF2 460	TSF2 459	TSF2 424	TSF2 423				
TSF2 498	TSF2 497	TSF2 462	TSF2 461	TSF2 426	TSF2 425				
TSF2 500	TSF2 499	TSF2 464	TSF2 463	TSF2 428	TSF2 427				
TSF2 502	TSF2 501	TSF2 466	TSF2 465	TSF2 430	TSF2 429				
TSF2 504	TSF2 503	TSF2 468	TSF2 467	TSF2 432	TSF2 431				
TSF2 506	TSF2 505	TSF2 470	TSF2 469	TSF2 434	TSF2 433				
TSF2 508	TSF2 507	TSF2 472	TSF2 471	TSF2 436	TSF2 435				
TSF2 510	TSF2 509	TSF2 474	TSF2 473	TSF2 438	TSF2 437				
TSF2 512	TSF2 511	TSF2 476	TSF2 475	TSF2 440	TSF2 439				
TSF2 514	TSF2 513	TSF2 478	TSF2 477	TSF2 442	TSF2 441				

5

4

T21N

3

R52E

10

15

22

20

21



SCALE
0 500 1000
U.S. Survey Foot

Sections projected using
Nevada BLM GCD8

TIE POINT:
The NW corner of TSF2 552 is
approximately 815 feet east and 202
feet south of the NE corner of
section 12, T21N, R51E, M.D.M.

CLAIM LOCATION DATES:
September 26, 2007: TSF2 407-569

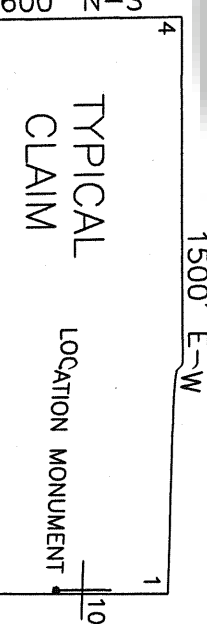
DOC # 0211249
11/19/2007 11:15 AM
Official Record
Issued Online First by
Eureka County - NV
Mike Rebaletti - Recorder
Book - Page - 0000 2578
GPT - 493 00
ES

LODE MINING CLAIM MAP
TSF2 407-569

T21N, R52E, M.D.M.
EUREKA COUNTY, NEVADA

Location:
IDAHO GENERAL MINES, INC.
10 N. POST STREET, SUITE 610
SPOKANE, WASHINGTON 99201

Survey and Map By: OCTOBER 2007 SHEET 2 OF 2
MINERAL EXPLORATION SERVICES, LLC
6635 REIDENS COURT, SUITE 15, RENO, NEVADA 89502
(775) 394-1082 Fax: (775) 829-6882



ALL CLAIMS ARE 1500' x 600' UNLESS OTHERWISE NOTED.
ALL MONUMENTS ARE 2' x 2' x 4' WOODEN POSTS.
LOCATION MONUMENTS ARE SET 10' INSIDE CLAIM BOUNDARY
UNLESS OTHERWISE NOTED