

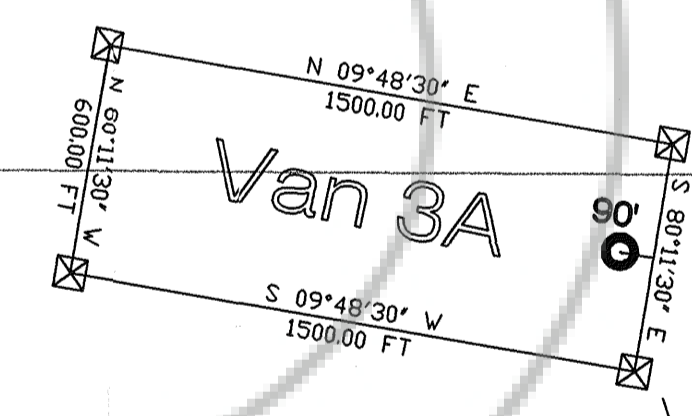
T16N
T15N

15

10

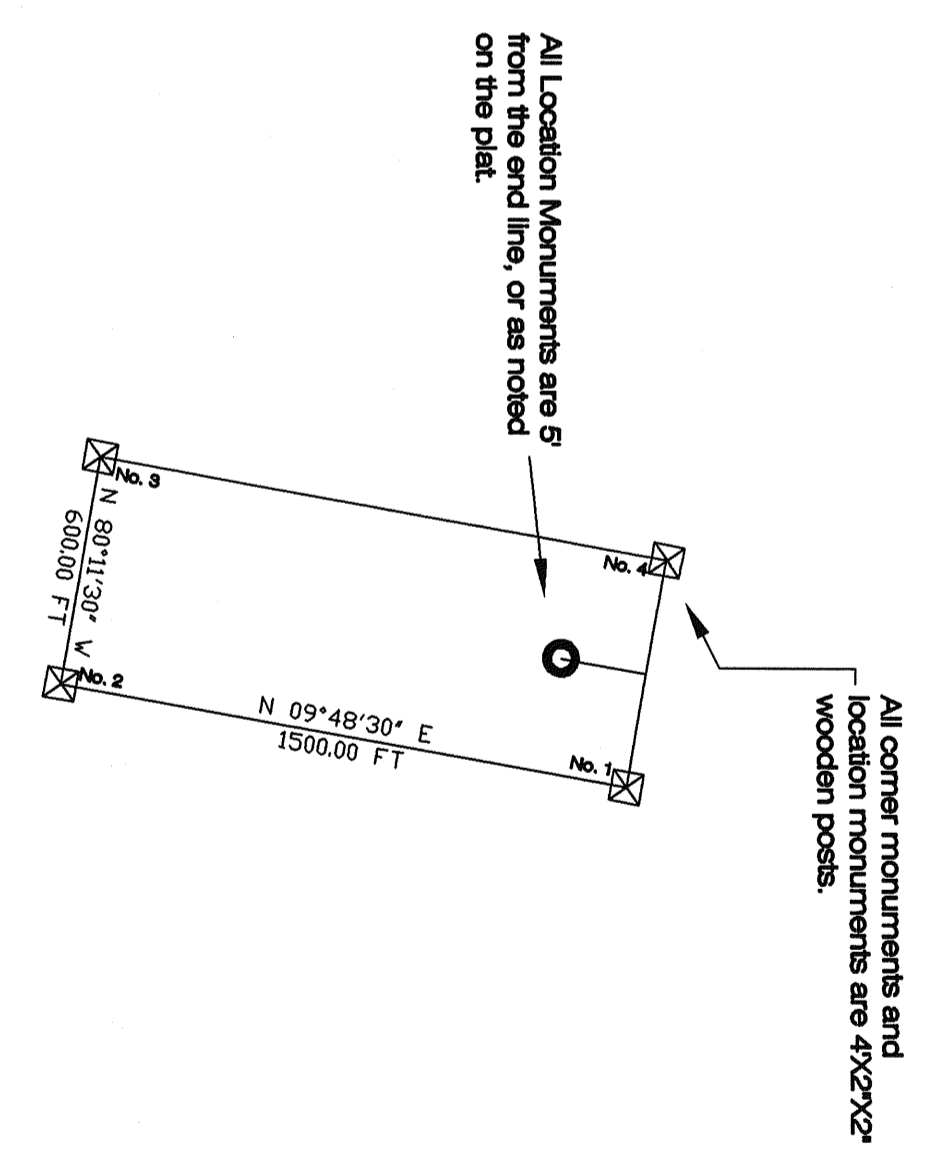
14

11



Found GLO brass cap for the
SE corner of Section 36
T16N, R52E, MDM, 3,343.6' North
& 10,207.6' East of the NE corner
of Van 3A.

DOC # 0211260
11/27/2007 02:14 PM
Official Record
Recording requested by
PAMELA S. SCUTT
Eureka County - NV
Mike Rebaletti - Recorder
Fee: \$19.00 Page 1 of 1
5071 Recorded By: FES
Book- Page- 0000
0211260



All Location Monuments are 5' from the end line, or as noted on the plat.

All corner monuments and location monuments are 4 1/2 x 2 x 2 wooden posts.



RMP Resources Corp.
2778 Spokane Creek Rd.
E. Helena, MT 59635

Claim in T15N, R52E, MDM, Sections 2 & 3
Eureka County, Nevada

Map Of:

Lode Claim VAN 3A
Located November 19, 2007

Located For:

Pamela S. Scutt, Richard McKay, and Nancy Minoletti
2749 MiraBella Circle
Morgan Hill, California 95037