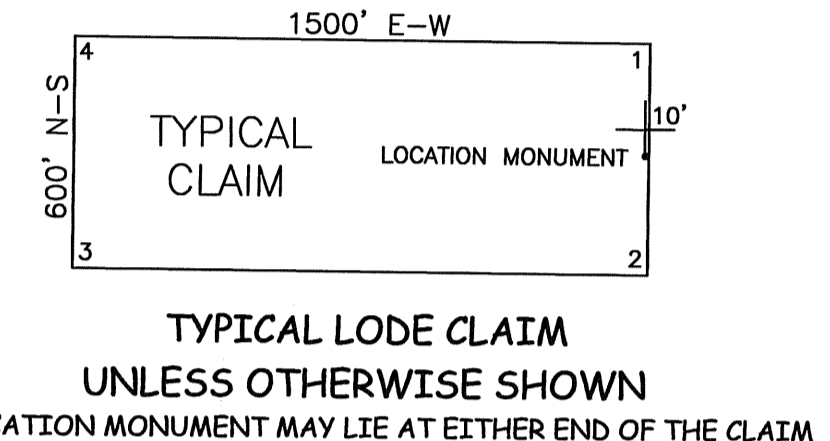


0 500 1000
 SCALE
 U.S. Survey Foot
 Sections projected using Nevada
 GCSB, Nevada State Plane 1927.



TIE POINT:
 The NW corner of CAN 37 is approximately 37 feet north and 324 feet west of the SE corner of Section 2, T33N, R50E, M.D.M.

TIE POINT:
 The SE corner of CAN 36 is approximately 71 feet south and 452 feet east of the SE corner of Section 2, T33N, R50E, M.D.M.

TIE POINTS:
 The SE corner of CAN 36 is approximately 71 feet south and 452 feet east of the SE corner of Section 2, T33N, R50E, M.D.M.
 The NW corner of CAN 37 is approximately 37 feet north and 324 feet west of the SE corner of Section 2, T33N, R50E, M.D.M.

OWNER:
 NEWMONT USA LIMITED, doing business in Nevada as
 NEWMONT MINING CORPORATION
 555 Fifth Street
 Elko, Nevada 89801

- LEGEND:**
- = 2" x 2" x 4' WOOD POST CLAIM CORNER
 - = 2" x 2" x 4' WOOD POST LOCATION MONUMENT
 - ◇ = FOUND SURVEY MONUMENT

NOTES:
 ALL LOCATION MONUMENTS AND CLAIM CORNERS ARE 2" x 2" x 4' WOOD.
 LOCATION MONUMENTS ARE SET ON THE CENTERLINE OF EACH CLAIM,
 10 FEET FROM THE NEAR ENDLINE AND 1490 FEET FROM THE OPPOSITE ENDLINE, UNLESS OTHERWISE SHOWN.
 ALL CLAIMS ARE 1500' LONG BY 600' WIDE UNLESS OTHERWISE SHOWN.

DOC # 0211406
 12/14/2007 10:47 AM
 Official Record
 Recording requested by
 NEWMONT MINING CORP
 Eureka County - NV
 Mike Rebaletti - Recorder
 Fee: \$1,004.00 Page 1 of 1
 RPT: Recorded By: FES
 Book-- Page-- 0000

CLAIM MAP OF
CAN 1 - 72
 Lode Claims located within
 Sections 1-3 and 10-14, T33N, R50E, MDM
 Sections 8 and 17, T33N, R51E, MDM
 Sections 34 and 35, T34N, R50E, MDM
 Eureka County, Nevada

NEWMONT MINING CORPORATION