

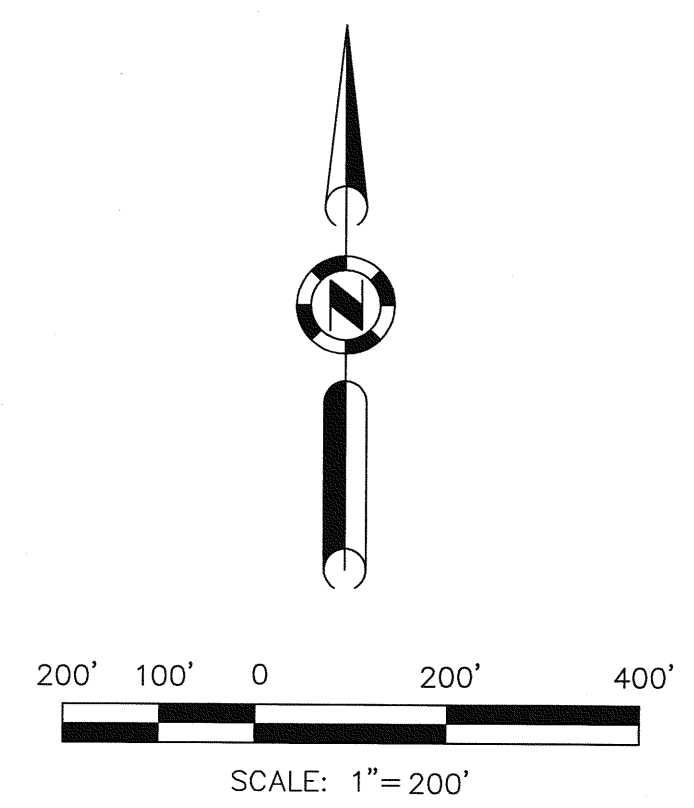
N 1/4 COR. SEC. 35
FOUND
GLO BRASS CAP
PER FILE #67032

BASIS OF BEARINGS
N89°34'18"E

1321.07'
1321.20'(R1)

2642.40'(R1)
2642.15'

NE COR. SEC. 35
FOUND
GLO BRASS CAP
PER FILE #67032



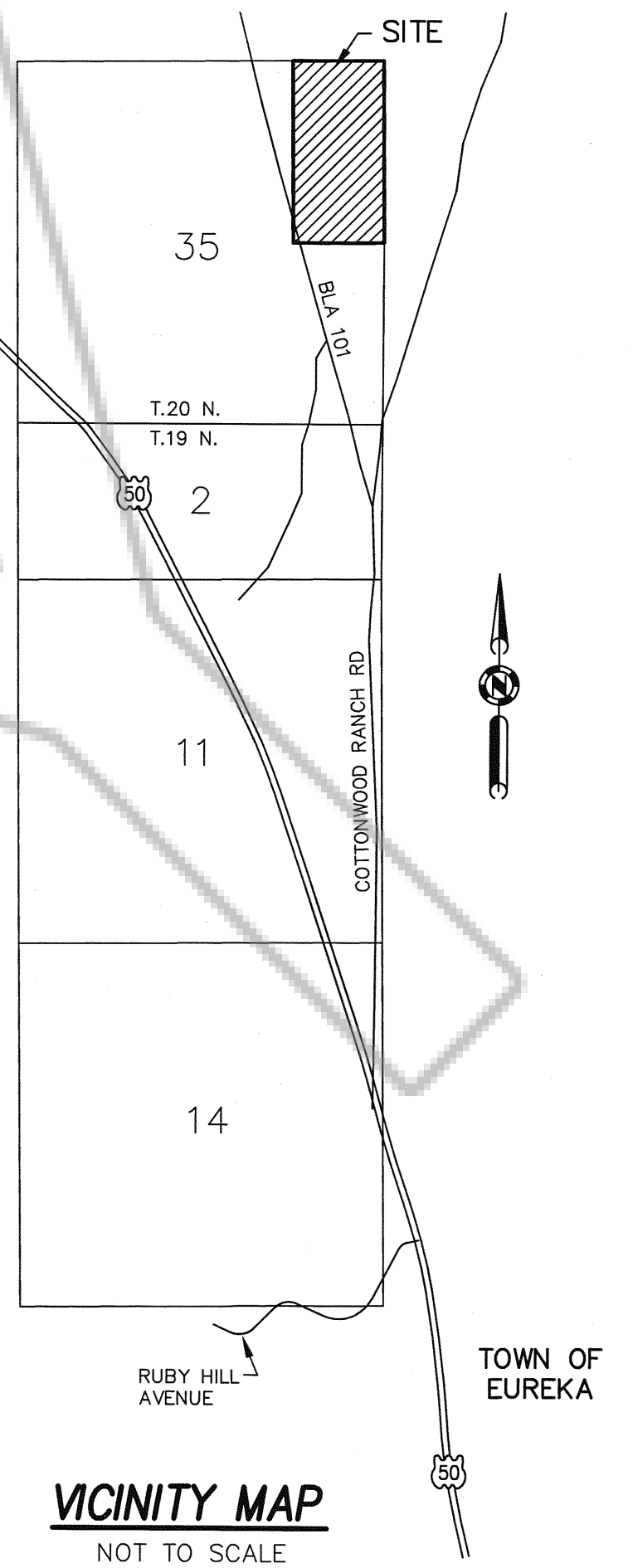
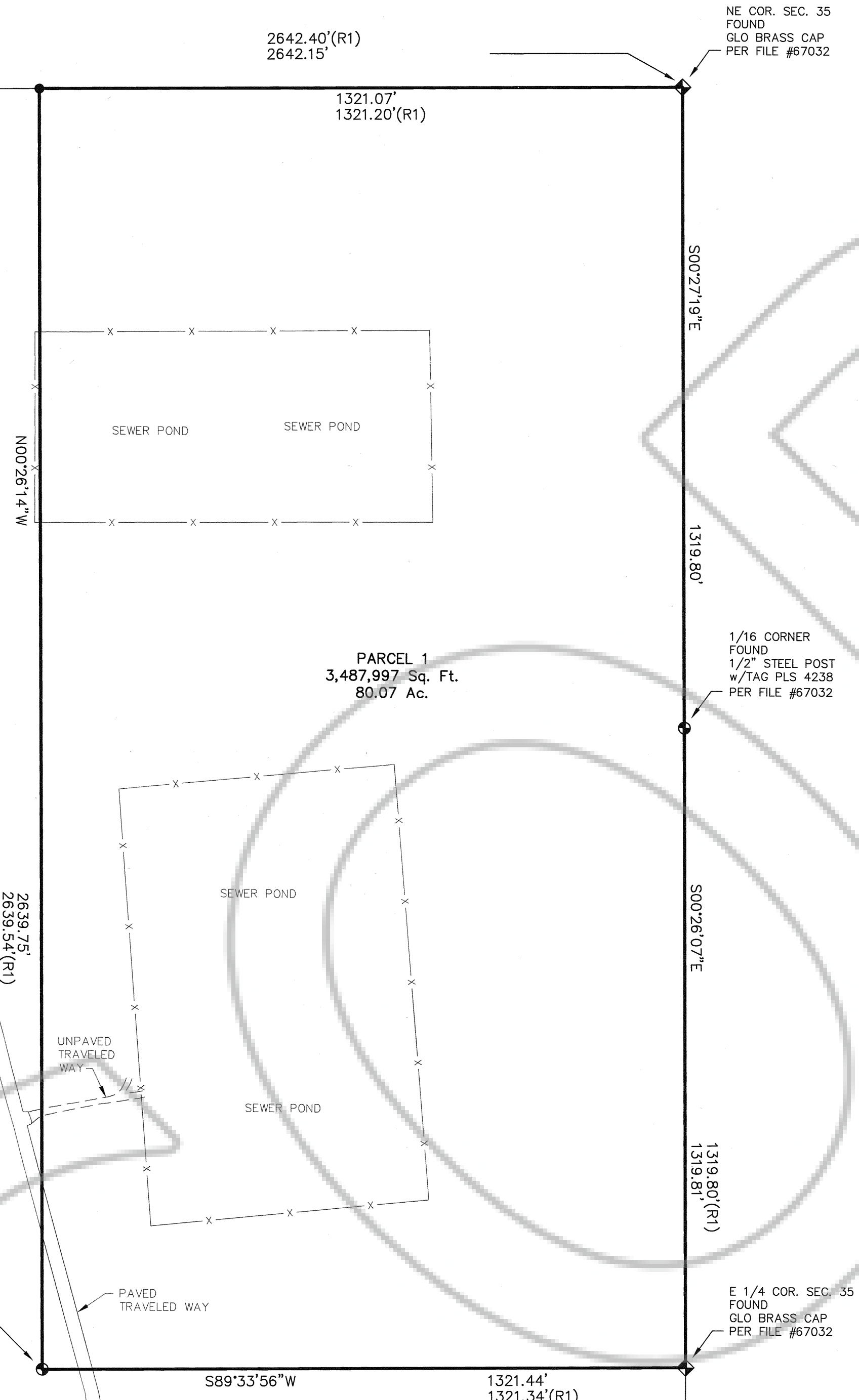
- LEGEND**
- ◆ SECTION OR 1/4 CORNER AS SHOWN
 - 1/16 CORNER AS SHOWN
 - SET 5/8" REBAR w/CAP PLS 14346

BASIS OF BEARINGS

THE BASIS OF BEARINGS FOR THIS SURVEY IS BASED ON NAD 83/94 AND THE U.S. STATE PLANE COORDINATE SYSTEM, NEVADA EAST, BETWEEN FOUND MONUMENTS ON THE NORTHERLY LINE OF THE NE 1/4 OF SECTION 35 MEASURED AS N89°34'18"E PER THIS SURVEY.

REFERENCE DOCUMENTS

(R1) RECORD OF SURVEY FOR EUREKA COUNTY COMMISSIONERS, FILE #67032



SURVEYOR'S CERTIFICATE

I, DAVID L. BRATCHER, A PROFESSIONAL LAND SURVEYOR LICENSED IN THE STATE OF NEVADA, CERTIFY THAT:

- 1) THIS IS A TRUE AND ACCURATE REPRESENTATION OF THE LANDS SURVEYED UNDER MY SUPERVISION AT THE INSTANCE OF EUREKA COUNTY
- 2) THE LANDS SURVEYED LIE WITHIN THE NE 1/4 OF SECTION 35, T.20 N., R.53 E., M.D.B. & M. AND THE SURVEY WAS COMPLETED ON 6-19-08
- 3) THIS MAP IS NOT IN CONFLICT WITH THE PROVISIONS OF N.R.S. 278.010 TO 278.630, INCLUSIVE, OR WITH PROVISIONS OF N.R.S. 625 AND ALL LOCAL ORDINANCES.
- 4) THE MONUMENTS ARE OF THE CHARACTER SHOWN, OCCUPY THE POSITIONS INDICATED, AND ARE OF SUFFICIENT DURABILITY.

David L. Bratcher
DAVID L. BRATCHER P.L.S. 14346



NOTE: IN ACCORDANCE WITH NRS 247 & 239, TO OBTAIN AN OFFICIAL COPY OF THIS MAP, CONTACT THE EUREKA COUNTY RECORDER.

SHEET 1 OF 1

DOC # 0212144
07/16/2008 01:21 PM
Official Record
Recording Requested by
EUREKA COUNTY NV
Eureka County - NV
Mike Rebaletti - Recorder
Fee: _____ Page: 1 of _____
RPTT: _____ Recorded By: FS
Book: _____ Page: 0000

0212144

RECORD OF SURVEY
FOR
EUREKA COUNTY (SEWER PONDS)

A PORTION OF THE NE 1/4 OF SECTION 35
TOWNSHIP 20 N., RANGE 53 E., M.D.B. & M.

UMOS ASSOCIATES
178 SOUTH MAINE ST
FALLON, NEVADA 89406
TEL (775) 423-2188
FAX (775) 423-5657

Drawn By: JPW
Date: 7-2-08
Job No.: Eureka Sewer
Drawing No.: EurekaSewerROS.DWG