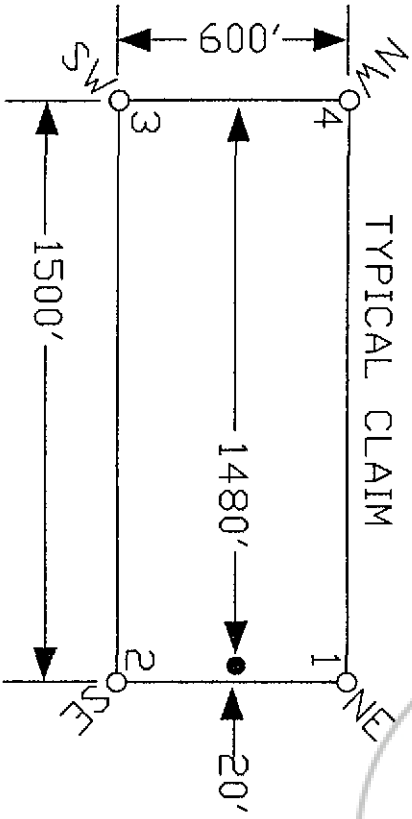
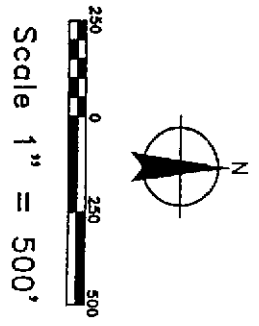
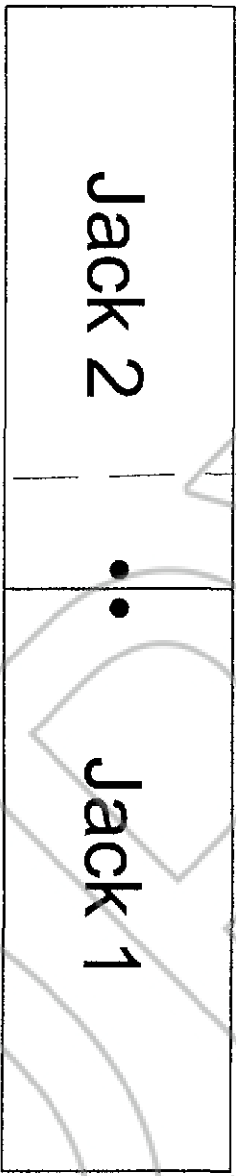


THE POINT DATA:  
 THE NORTHEAST CORNER OF JACK 1 LIES APPROXIMATELY  
 783 FEET WEST AND 1,464 FEET SOUTH OF THE NORTHEAST  
 CORNER OF SECTION 25, T.23N., R.49E., M.D.B.M.



LOCATION DATES:  
 August 21, 2008 - Jack 1 & Jack 2



**DOC # 0212638**

10/17/2008 8:56 AM  
**Official Record**  
 Recording Requested By  
 HALLIBURTON

Eureka County - NV  
 Mike Rebaleati - Recorder  
 Fee: \$34.00 Page 1 of  
 RPTT: Recorded By: LLH  
 Book- Page- 0000

**Halliburton**

912 Dunphy Ranch Road, Battle Mountain, NV 89820  
 Jack 1-2 Lode Claims  
 T.23N., R.49E; Eureka County, Nevada

**Carroll** MINING SERVICES  
 369 - 5th STREET ELKO, NV 89801 FAX: (751)784-8871  
 DATE: September 2008  
 PREPARED BY: JLM  
 DRAWN BY: JLM

M CLAIM END  
 MENTS AND CLAIM