

DOC # 0212868

11/26/2008

2:42 PM

Official Record

Recording requested By
BASIN & RANGE RESOURCES LLC

Eureka County - NV

Mike Rebaleati - Recorder

Fee: \$22.50

Page 1 of 1

RPTT:

Recorded By: LLH

Book- 0483 Page- 0278

CERTIFICATE OF LOCATION
LODE MINING CLAIM

TO ALL WHOM IT MAY CONCERN:

The undersigned hereby certifies that he has caused to be located the
RM 228 Lode Mining Claim in
the following quarter section(s):



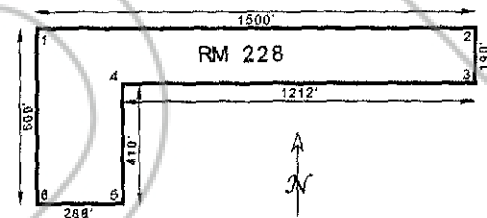
RECORDER'S STAMP

1/4	Section	Township	Range	Meridian
NW	25	19N	53E	MDBM

In Eureka County, Nevada, on the 5th day of
September, 2008.

Name and mailing address of locator is:

Basin and Range Resources, L.L.C.
1815 E. Winsett St.
Tucson, AZ 85719



The Claim is approximately 1500 feet long and 600 feet wide, such that 1480 feet are claimed in a north direction and 20 feet in a south direction from the point of discovery (monument of location), at which the Notice of Location was posted, together with 300 feet on each side of the monument of location and center line of the Claim. The general course of the lode or vein is from the south to the north direction.

The number, location and markings on each corner monument are as follows:

	Location	Markings	Description
No. 1	NW	NW cor. of RM 228 & map	1 1/2" X 1 1/2" wooden posts
No. 2	NE	NE cor. of RM 228 & map	1 1/2" X 1 1/2" wooden posts
No. 3	E	SE cor. of RM 228 & map	1 1/2" X 1 1/2" wooden posts
No. 4	S	North cor. of South side of RM 228 & map	1 1/2" X 1 1/2" wooden posts
No. 5	SE	South cor. of South side of RM 228 & map	1 1/2" X 1 1/2" wooden posts
No. 6	SW	SW cor. of RM 228 & map	1 1/2" X 1 1/2" wooden posts

As erected on the ground, each corner monument consists of 1 1/2" by 1 1/2" by 4' wooden posts marked with metal tags containing the claim name, corner location, and general location map. Location work consisted of making a claim map as provided in NRS 517.040

Dated the 5th day of September, 2008

SIGNATURE OF LOCATOR:

By Chelsea Kreiner

Agent for Basin and Range Resources, L.L.C. - Chelsea Kreiner

Suggested Form - Nevada Division of Minerals (REV. 11/13/2006 LV)
Nevada Lode Notice of Location - NRS 517.010