

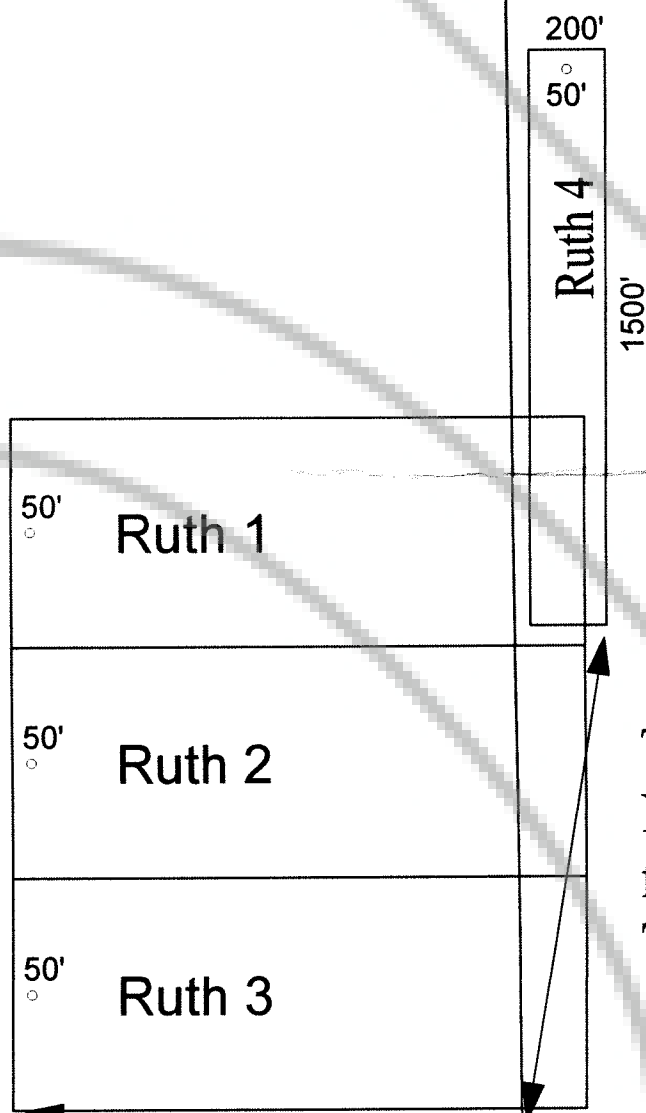
33

34

T23N R50E  
T22N R50E

4

3



The SE Corner of Ruth 4 bears  
N9°26'E and is 1,378'  
from the SW corner of Section 3  
T22N R50E

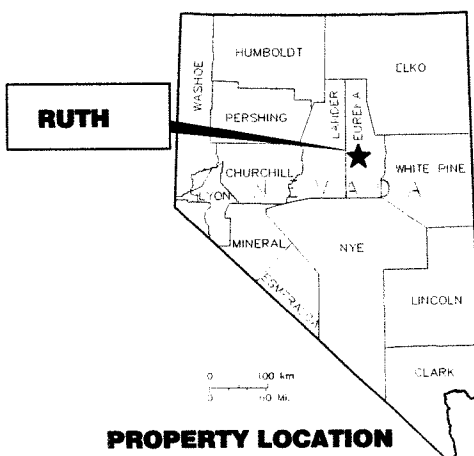
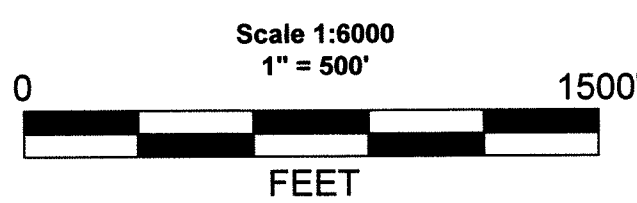
The SW Corner of Ruth 3 bears  
N85°27'W and is 1,335'  
from the SE corner of Section 4  
T22N R50E

9

10

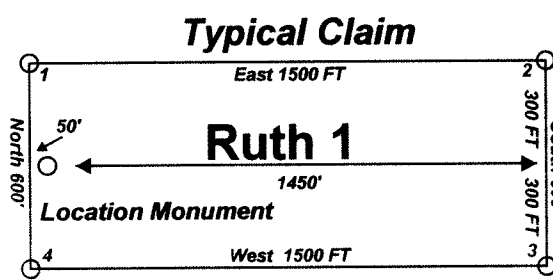
Ruth 1-4 claims were located on September 30, 2008; in  
Sections 3 & 4 Township 22 North Range 50 East,  
in Eureka County, Nevada

### Claim Location Map for Ruth 1-4 Claims Sheet 1 of 1



Locator:  
Quito Gold Corporation  
1585 Meadowwood Lane, Suite 3  
Reno NV. 89502

Notes:  
Location Monuments are set 50' from claim  
end lines unless noted otherwise. All location  
and corner monuments are 2" X 2" X 4' wooden  
posts with scribed metal tags. All claims are  
600' by 1500' unless noted otherwise. All  
bearings based on UTM North.



MINING CLAIM LOCATION MAP Ruth 1-4 Lode Mining Claims
Locator: Quito Gold Corporation 1585 Meadowwood Lane, Suite 3 Reno NV. 89502
Ruth_1-4_Claims_UTM_Feet.dwg October 15, 2008 Drawn By: G.I.S. Land Services
Surveyed By: T&T Exploration LLC Datum: 1927 Projection: UTM Zone 11 Units: Feet

DOC # 0212930  
12/16/2008 9:25 AM  
Official Record  
Recorded/Indexed By:  
MIKE REBELETTI  
Eureka County - NV  
Mike Rebeletti - Recorder  
Fee: \$64.00 Page: 1 of 1  
Book: 0000 Recorded By: LLH