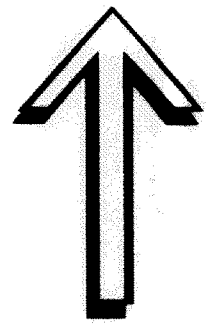
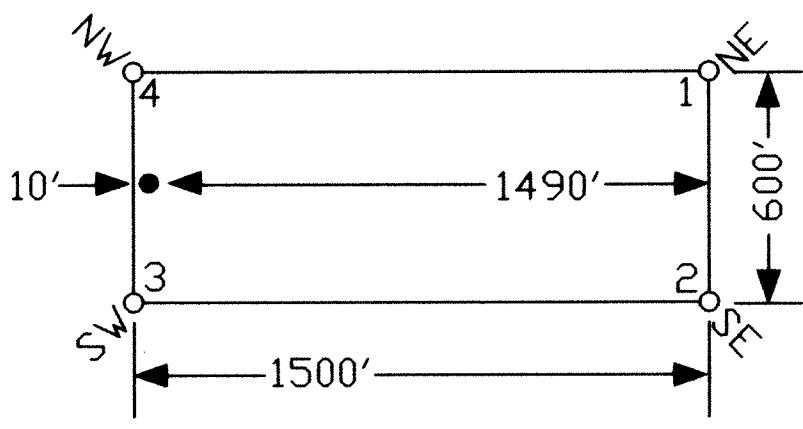
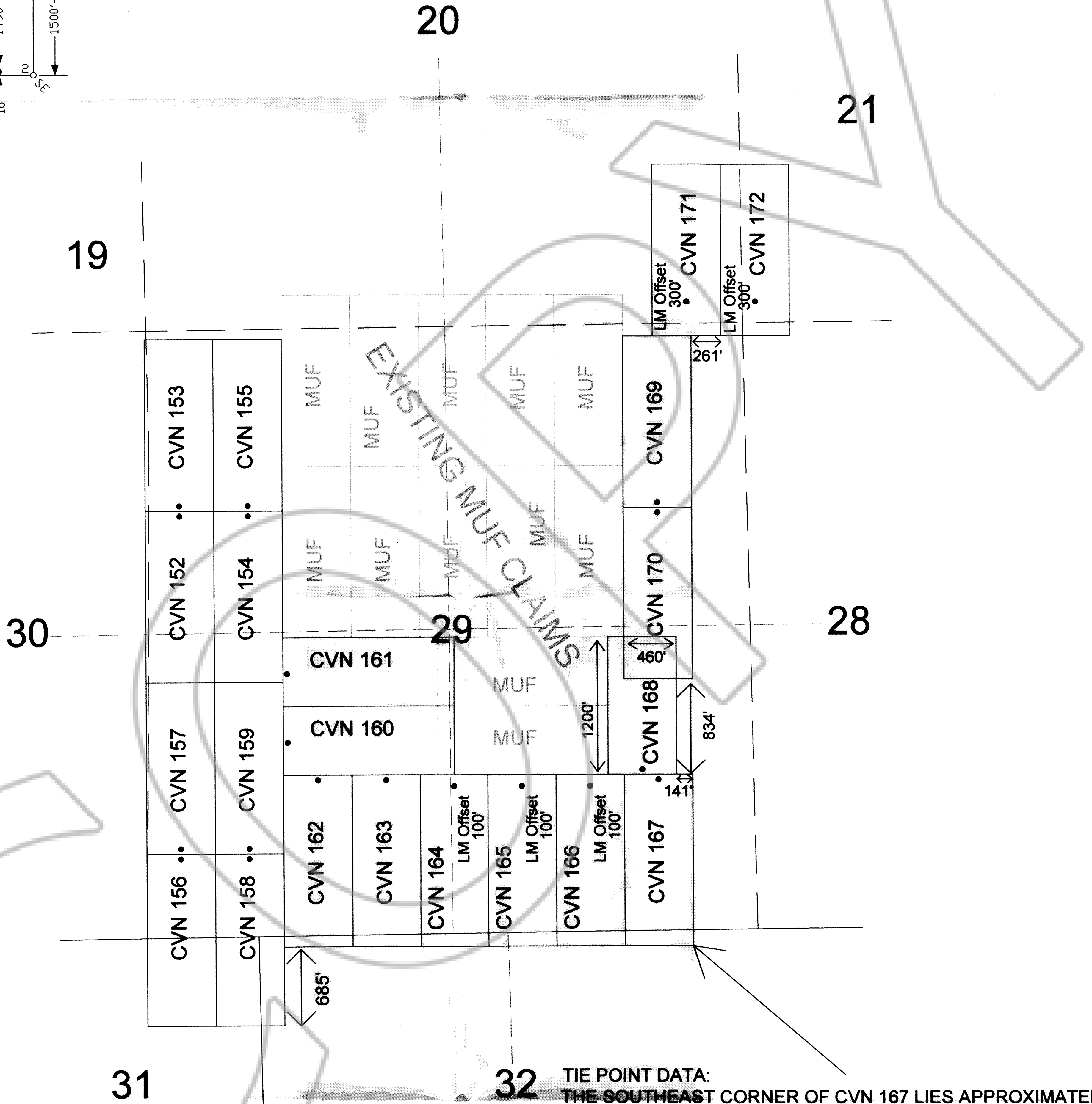
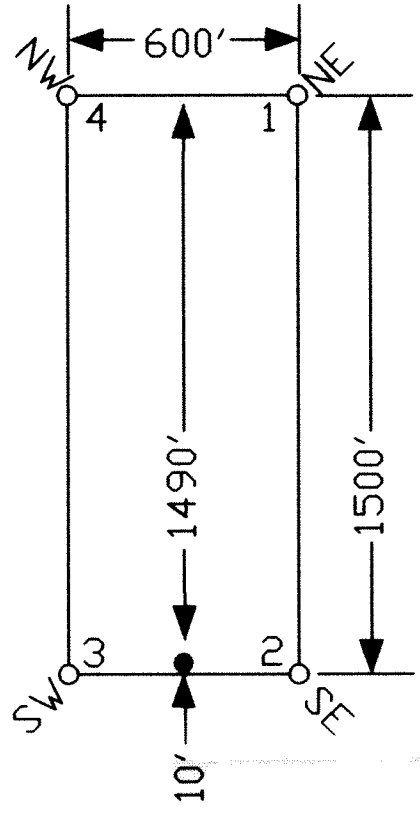


TYPICAL CLAIMS



Scale 1" = 500'  
1:6000



**32 TIE POINT DATA:**  
THE SOUTHEAST CORNER OF CVN 167 LIES APPROXIMATELY 1,478 FEET WEST AND 158 FEET SOUTH OF THE NORTHEAST CORNER OF SURVEYED SECTION 32, T.31N., R.51E., M.D.B.M.

**NOTES:**  
LOCATION MONUMENTS SET 10' FROM CLAIM END CENTERLINES UNLESS OTHERWISE NOTED ON MAP.  
ALL LOCATION MONUMENTS AND CLAIM POSTS ARE 2"x2"x4' WOODEN STAKES.  
DASHED SECTION LINES INDICATE PROJECTED SECTIONS.  
21 TOTAL CLAIMS

**LOCATION DATES:**  
10/28/08 - CVN 152-172

DOC # 0212988  
Official Record  
Eureka County - NV  
Mike Rebielati - Recorder  
Book- Page-  
0212988

369 - 5th STREET  
PH: (775) 778-0668 ELKO, NV 89801 FAX: (775) 778-0687

Locator: KM Exploration, Ltd.  
109 Fir Street, Elko, NV, 89801  
CVN 152-172 Lode Claims  
T.31N. R.51E.; Eureka County, Nevada

DATE: October 2008  
ACAD FILE NAME: clients\kmaxploration\cml152-172.dwg  
DRAWN BY: js  
PLOT SCALE: 1" = 500'