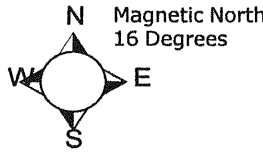


MAP FILING FORM

Map of the *Titan # 17 Mining Claim* in Sections 25 of Township 23N, Range 49E, in the Jack Ass Creek Area of Eureka County, Nevada. Located on the 5th day of December, 2008 by:

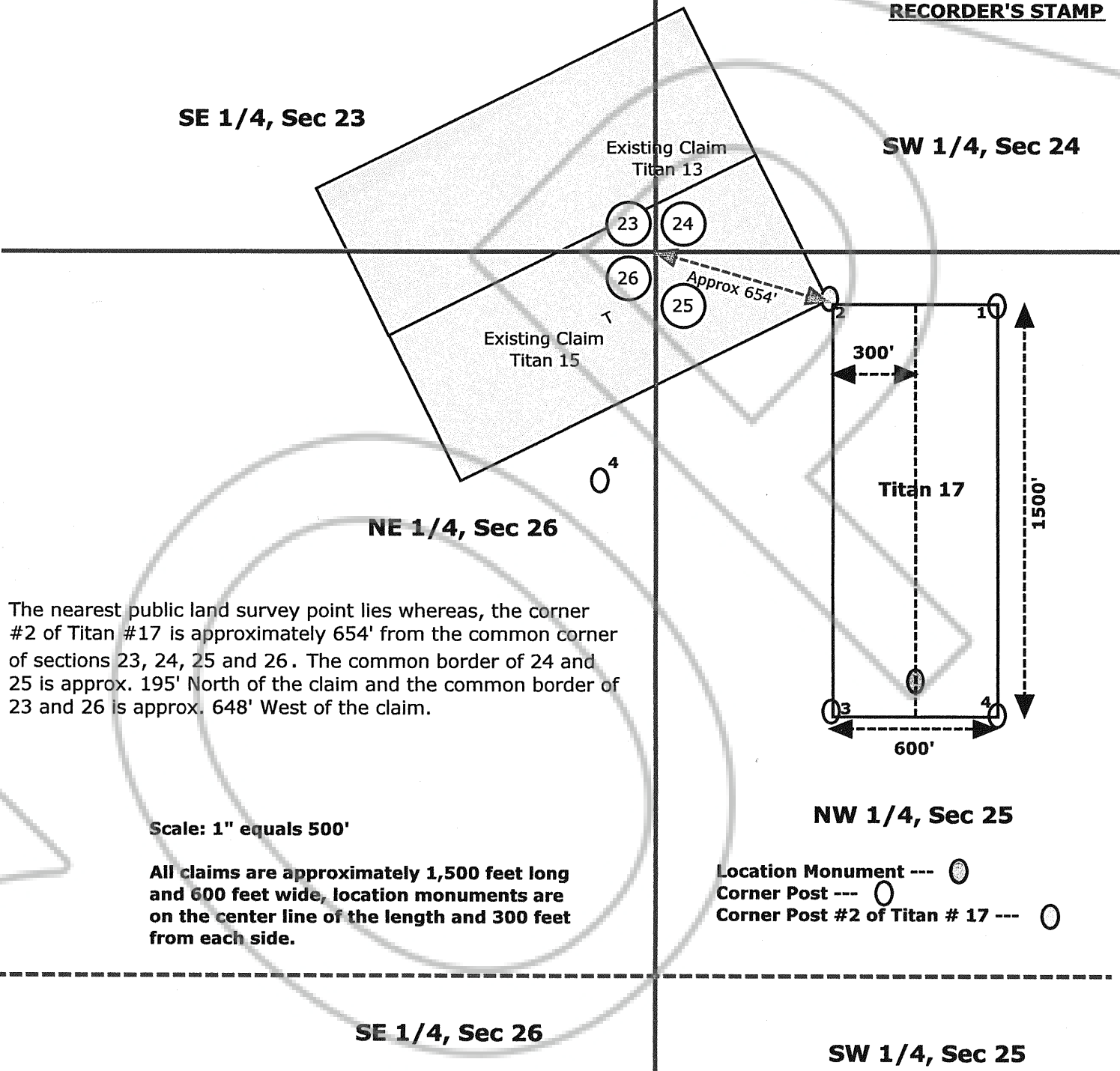
Locator name and address

Titan Mineral Resources, LLC
P.O. Box 324
Elko, NV 89801



Township 23N, Range 49E

RECORDER'S STAMP



The nearest public land survey point lies whereas, the corner #2 of Titan #17 is approximately 654' from the common corner of sections 23, 24, 25 and 26. The common border of 24 and 25 is approx. 195' North of the claim and the common border of 23 and 26 is approx. 648' West of the claim.

Scale: 1" equals 500'

All claims are approximately 1,500 feet long and 600 feet wide, location monuments are on the center line of the length and 300 feet from each side.

DOC # 0213052

01/21/2009 02:24 PM
Official Record
Recording requested by
TITAN MINERAL RESOURCES LLC
Eureka County - NV
Mike Rebaieati - Recorder
Fee: \$15.00 Page 1 of 1
RPTT: Recorded By: FES
Book- 0485 Page- 0075



0213052