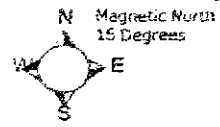


MAP FILING FORM

Map of the *Titan # 17 Mining Claim* in Sections 25 of Township 23N, Range 49E, in the Jack Ass Creek Area of Eureka County, Nevada. Located on the ~~6th~~ ^{5th} day of ~~December~~ ^{OCTOBER}, 2009 by:

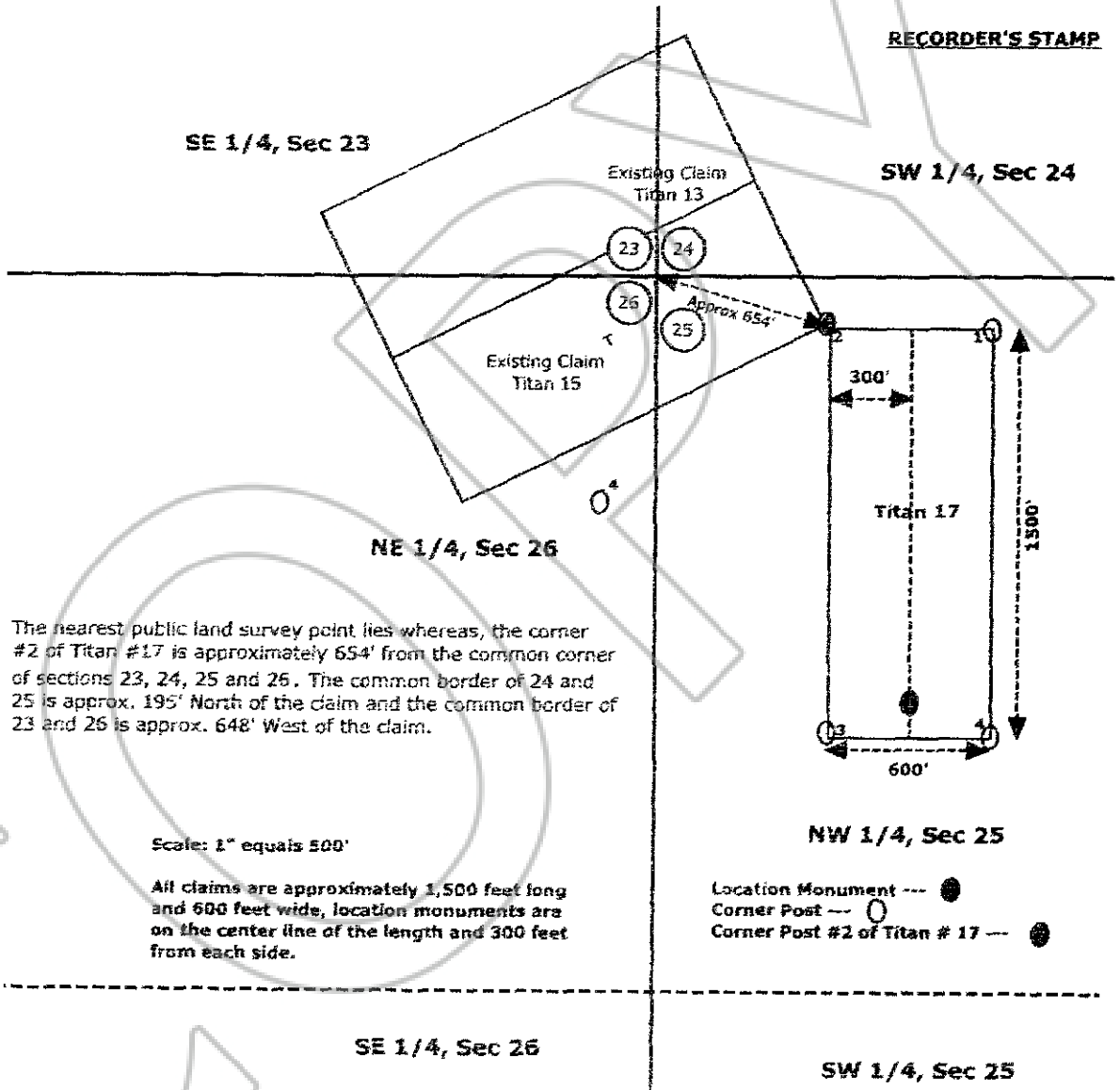
Locator name and address

Titan Mineral Resources, LLC
P.O. Box 324
Elko, NV 89801



Township 23N, Range 49E

RECORDER'S STAMP



The nearest public land survey point lies whereas, the corner #2 of Titan #17 is approximately 654' from the common corner of sections 23, 24, 25 and 26. The common border of 24 and 25 is approx. 195' North of the claim and the common border of 23 and 26 is approx. 648' West of the claim.

Scale: 1" equals 500'

All claims are approximately 1,500 feet long and 600 feet wide, location monuments are on the center line of the length and 300 feet from each side.

Location Monument --- ●
Corner Post --- ○
Corner Post #2 of Titan # 17 --- ●

DOC H 0213938

10/06/2009 01:02 PM

Official Record

Recording requested by
TITAN MINERAL RESOURCES LLC

Eureka County - NV
Mike Rebaleati - Recorder

Fee \$19.00 Page 1 of
RPTT: Recorded By: FES
Book- Page- 0000



0213938