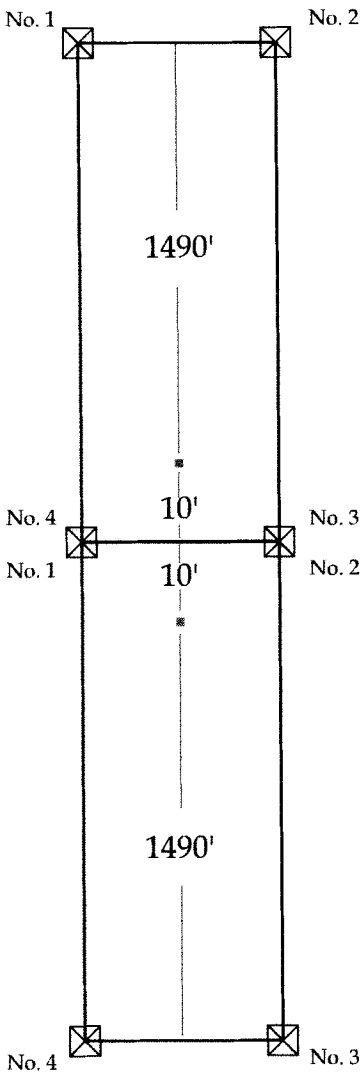


CLAIM MAP
TAZ Claims

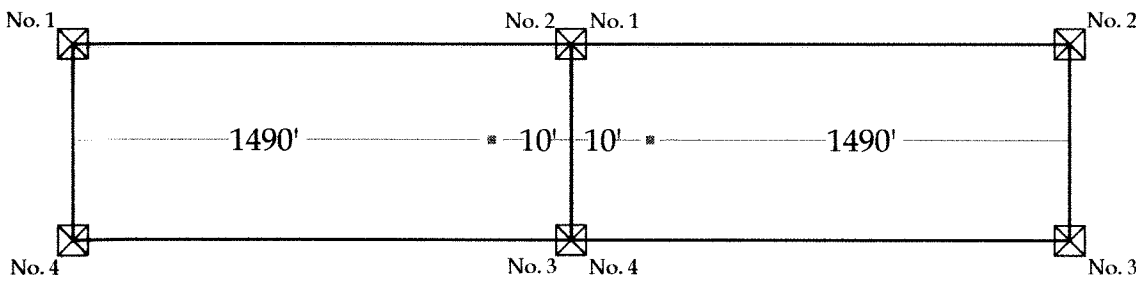
- ☒ Claim corner: 2X2 wood post with metal tag
- Location Monument: 2X2 wood post with metal tag and location notice

All claims are 1500' x 600'
Discovery Monuments for the TAZ claims are located at 10' off the end of the line, unless otherwise shown.

- No. 1: Northwest Corner
- No. 2: Northeast Corner
- No. 3: Southeast Corner
- No. 4: Southwest Corner



- No. 1: Northwest Corner
- No. 2: Northeast Corner
- No. 3: Southeast Corner
- No. 4: Southwest Corner

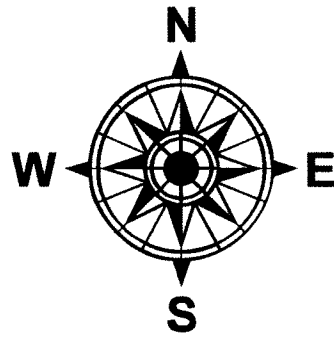


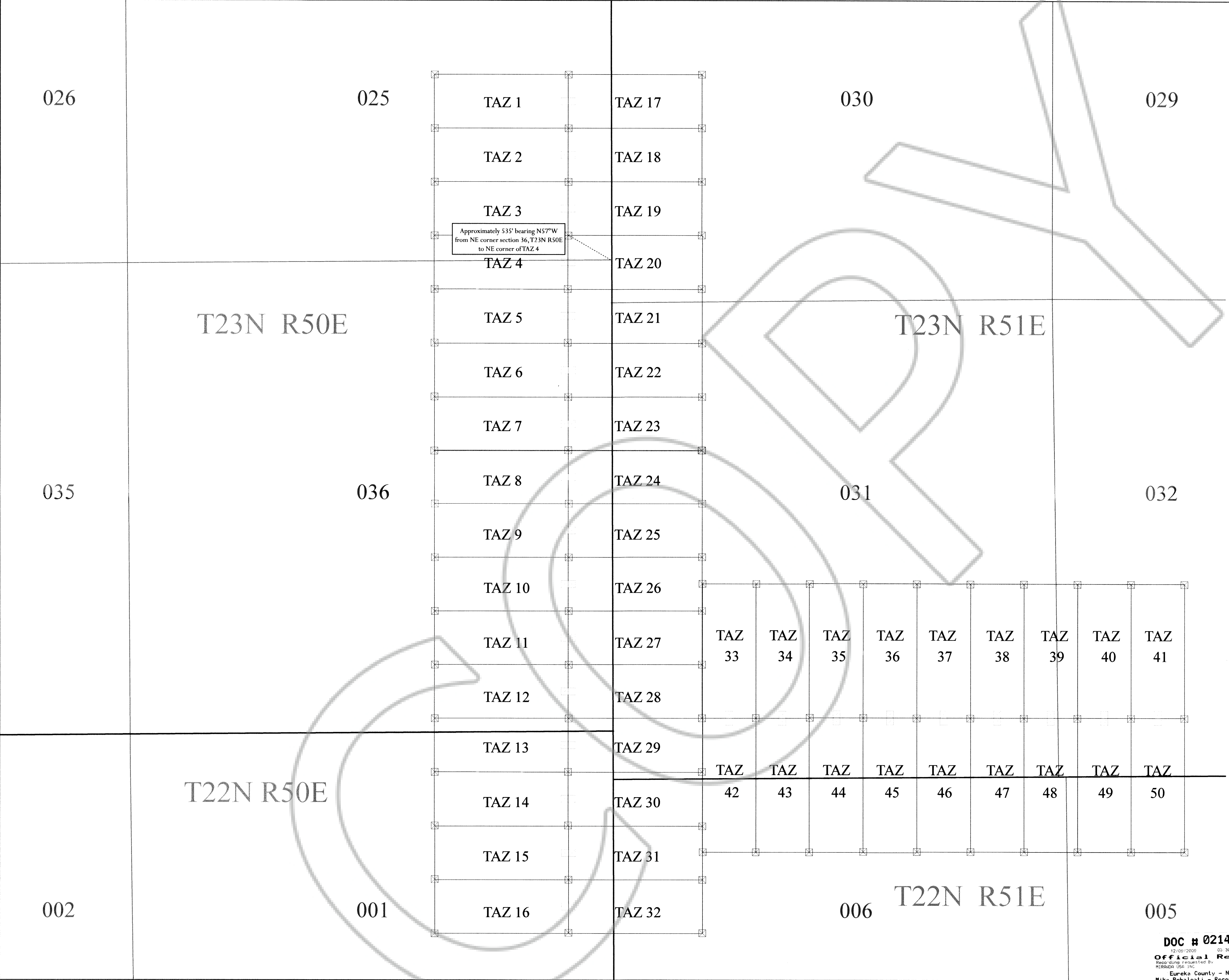
Miranda U.S.A., Inc.
Claim Map
TAZ Claims

Nos. 1-50

TAZ Nos. 1-50 located on Sep. 23, 2009
Located in sections 25 and 36
Township 23 North, Range 50 East M.D.M.,
and sections 30, 31 and 32
Township 23 North, Range 51 East M.D.M.,
and section 1
Township 22 North, Range 50 East M.D.M.,
and sections 5 and 6
Township 22 North, Range 51 East M.D.M.,
Eureka County, Nevada

Located By:
Miranda U.S.A., Inc.
310 Silver Street
Elko, Nevada 89801





CLAIM MAP

TAZ Claims

☒

Claim corner: 2X2 wood post with metal tag

•

Location Monument: 2X2 wood post with metal tag and location notice

All claims are 1500' x 600'

Discovery Monuments for the TAZ claims are located at 10' off the end of the line, unless otherwise shown.

No. 1: Northwest Corner
No. 2: Northeast Corner
No. 3: Southeast Corner
No. 4: Southwest Corner

No. 1: Northwest Corner
No. 2: Northeast Corner
No. 3: Southeast Corner
No. 4: Southwest Corner

Miranda U.S.A., Inc.

Claim Map

TAZ Claims

Nos. 1-50

TAZ Nos. 1-50 located on Sep. 23, 2009

Located in sections 25 and 36
Township 23 North, Range 50 East M.D.M.,
and sections 30, 31 and 32
Township 23 North, Range 51 East M.D.M.,
and section 1
Township 22 North, Range 50 East M.D.M.,
and sections 5 and 6
Township 22 North, Range 51 East M.D.M.,
Eureka County, Nevada

Located By:
Miranda U.S.A., Inc.
310 Silver Street
Elko, Nevada 89801

DOC # 0214355
12/09/2009 03:30 PM
Official Record
Recording requested by
Miranda U.S.A., Inc.
Eureka County - NV
Mike Rebaletti - Recorder
Fee: \$754.00
RPT: Page 1 of 1
Book: Page 0000