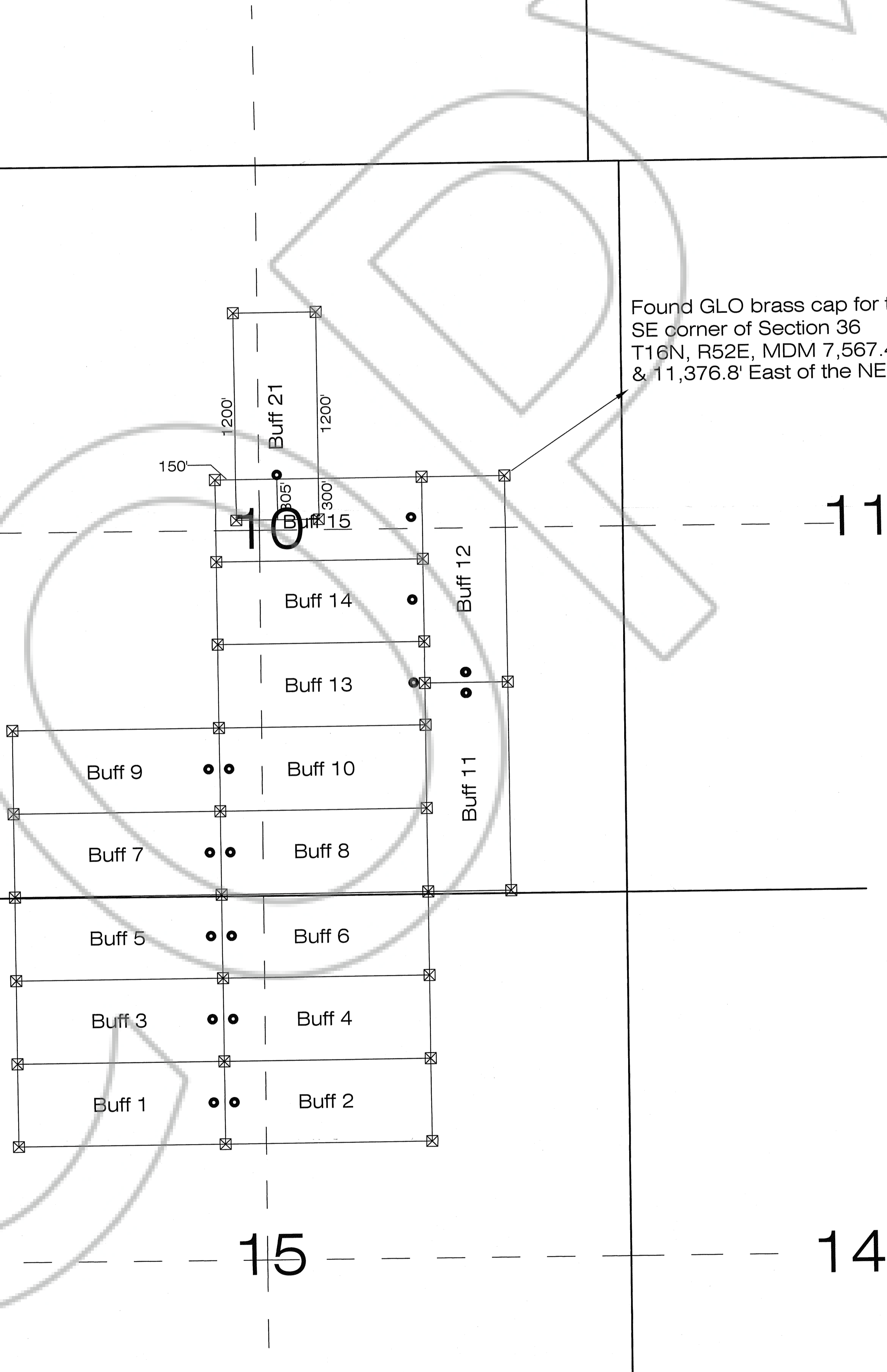
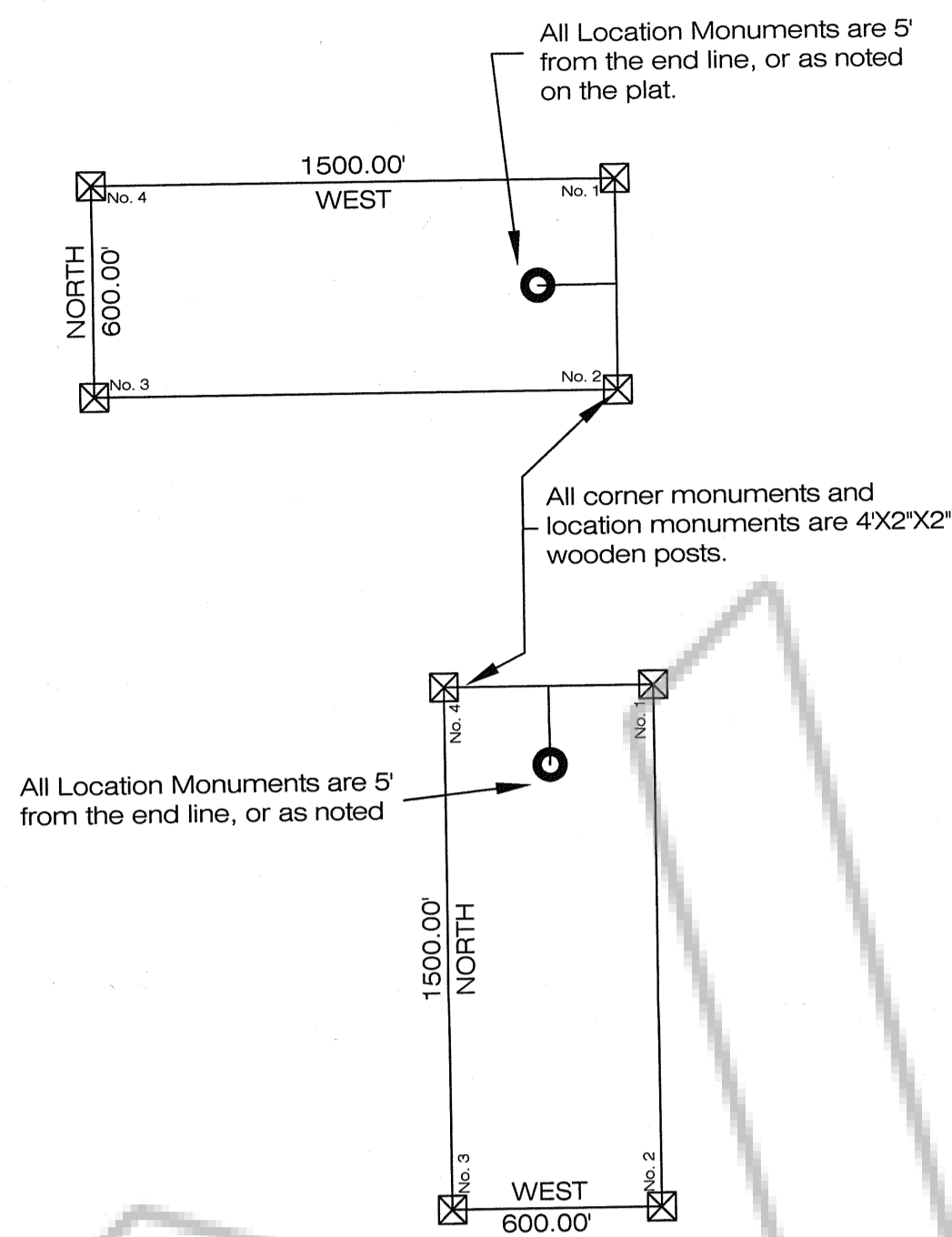
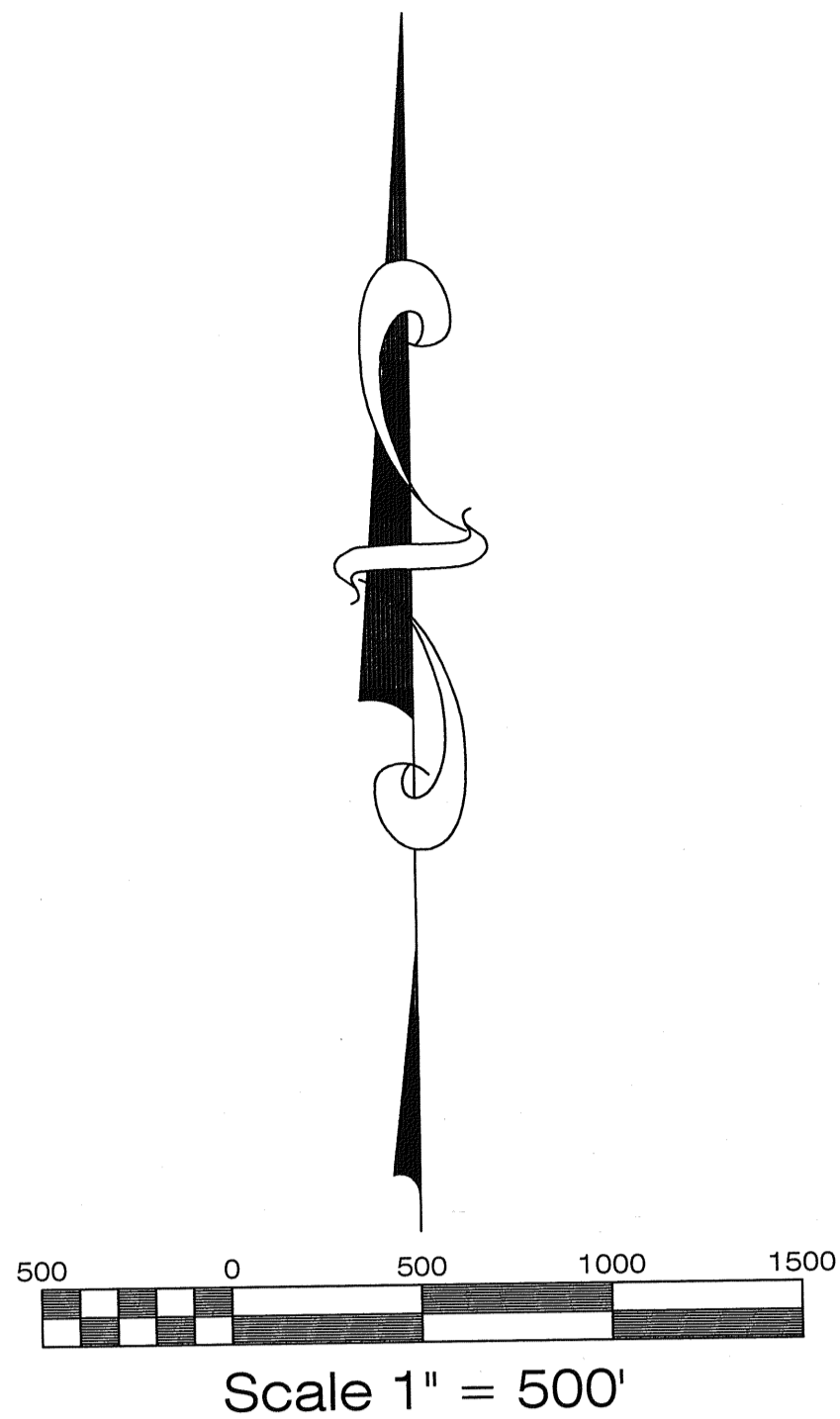


Buff Map 1 of 2



RMP Resources Corp., a Nevada corporation
 600 Lola St. Suite 10
 Helena, Montana 59601

DOC # 0214585

OFFICIAL RECORD
 Eureka County - NV
 Mike Rebalati - Recorder
 Fee: \$385.00
 Book: 0000 Page: 1/2



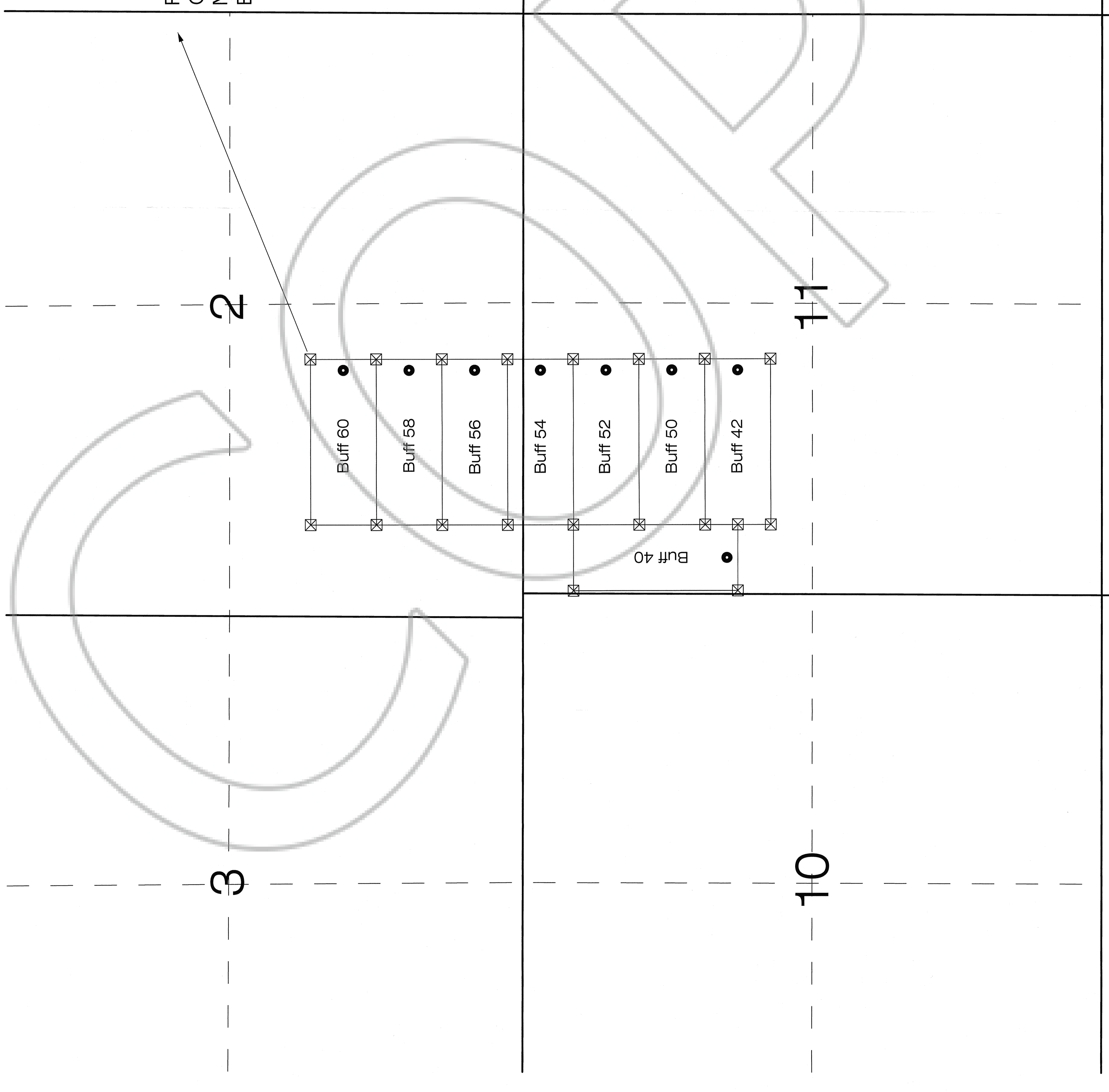
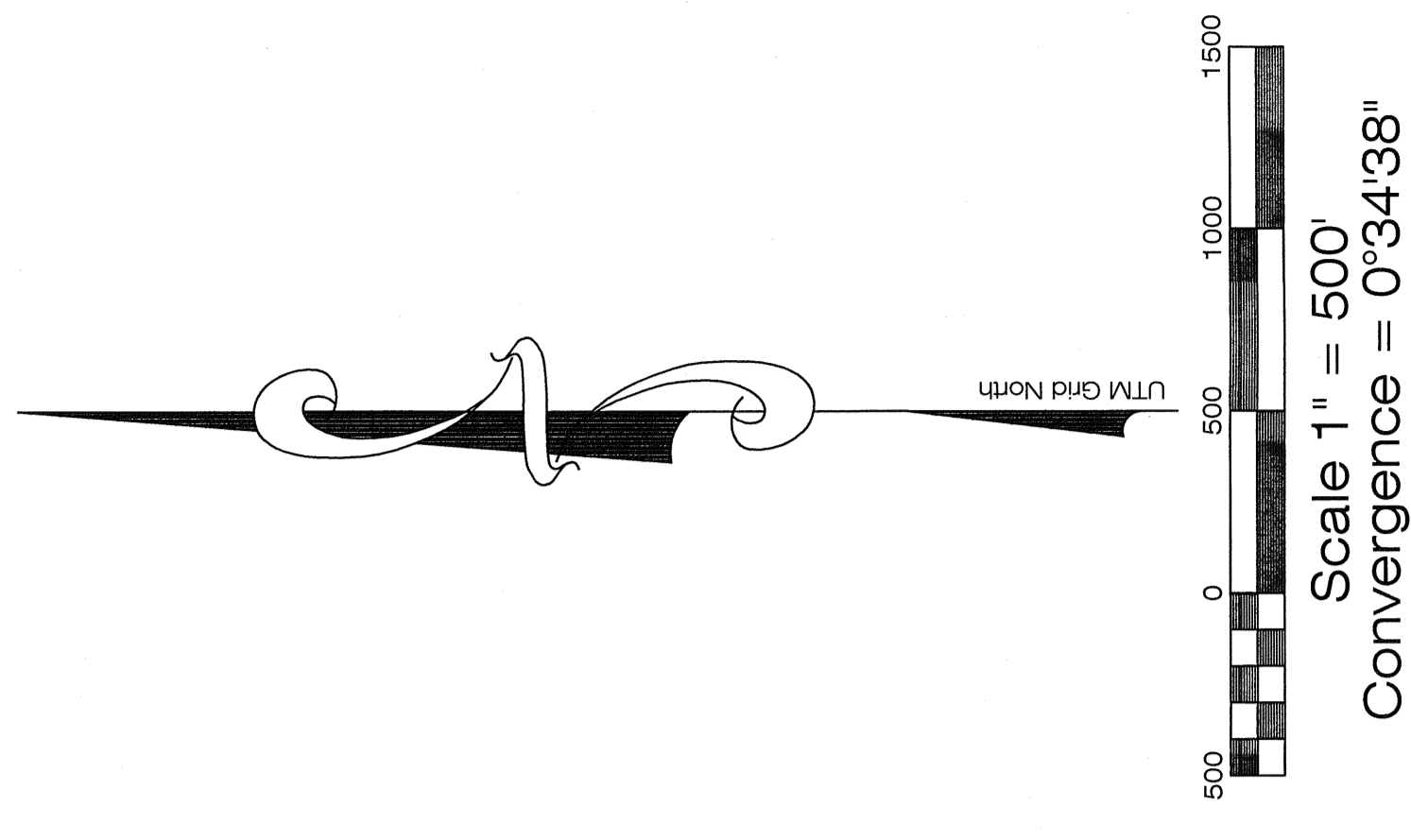
Lode Claims Buff 1 - 15, 21
 Eureka County, Nevada

Claims in T15N, R52E, MDM, Sections 10, 15

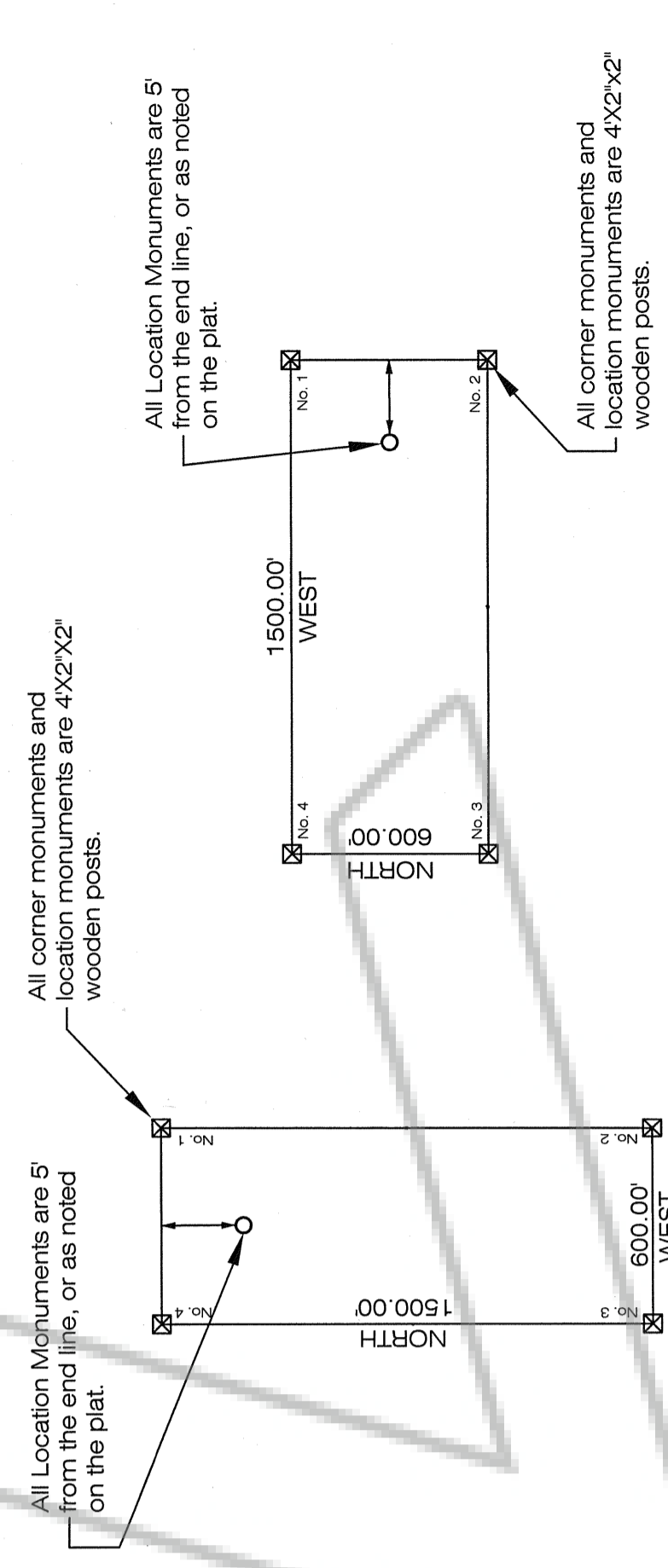
Map Of:

Buff Claims Map 2 of 2

Found GLO Brass Cap for the SE
Corner of Section 36, T16N, R52E,
MDM, 3,375.4' North and 8,388.8'
East of the NE Corner of Buff 60.



Typical Claim



Located For:

DOC # 0214585
02/03/2016 01:12 PM

Official Record
Recorded By: Mike Rebaletti - Recorder
Eureka County - NV
Fee: \$385.00
Page: 0000
Book: 2



Buff Lode Claims 40, 42
50, 52, 54, 56, 58, 60
Eureka County, Nevada

Map Of:

Claims in T15N, R52E, MDM, Sections 2, 11

RMP Resources Corp., a Nevada corporation
600 Lola Street, Suite 10
Helena, Montana 59601