

21 22
28 27

23 24
26 25

28 27
33 34

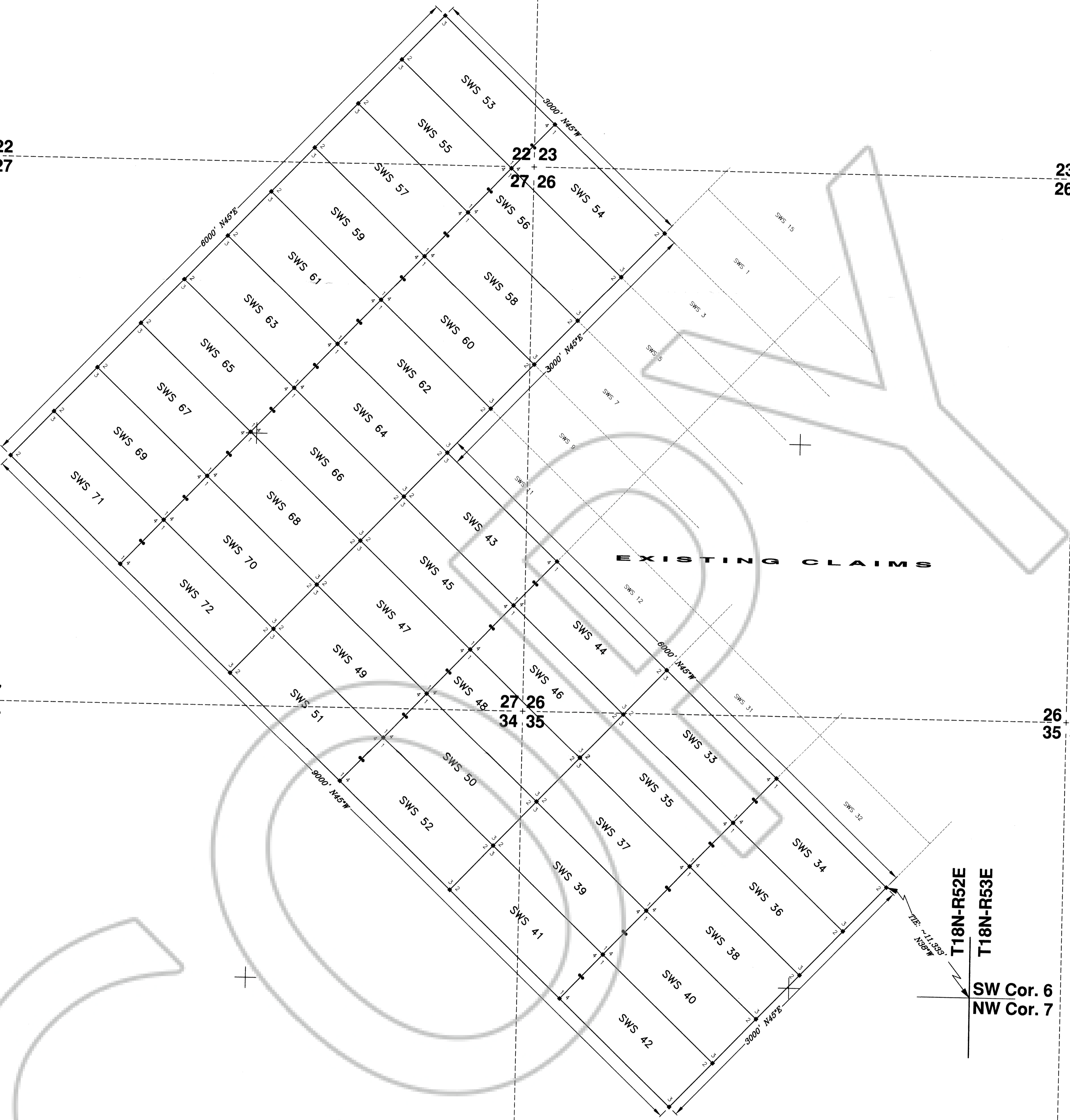
26 25
35 36

33 34
4 3

34 35
3 2

T 19 N-R 52 E
T 18 N-R 52 E

35 36
2 1

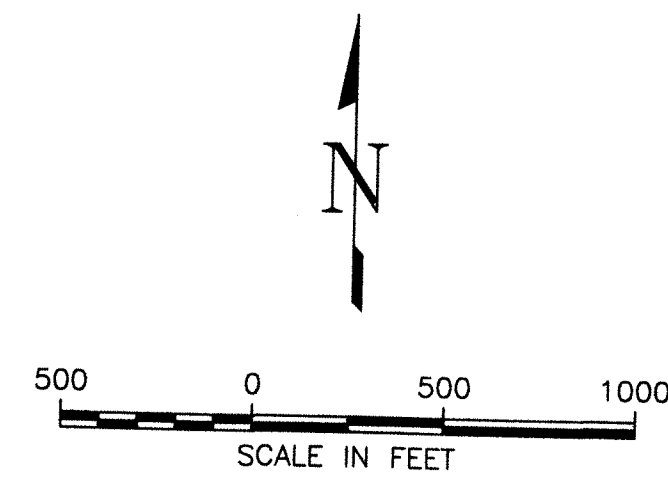
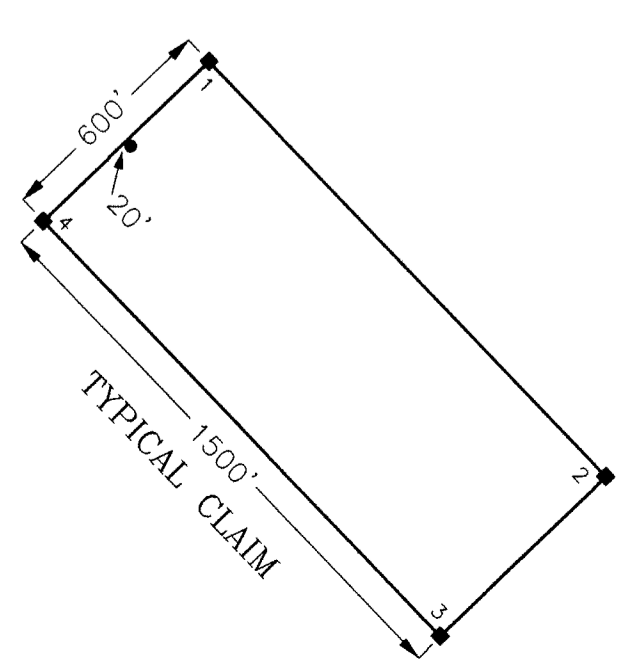


EXISTING CLAIMS

T18N-R52E
T18N-R53E
SW Cor. 6
NW Cor. 7

EXPLANATION

- Monuments of Location are set with 2"x2"x4' wood posts.
 - Claim Corners are set with 2"x2"x4' wood posts.
- All claims measure 600' x 1500'.
Monuments of Location are set 20' into claim.
- LOCATION DATE:
SWS 33-72 April 28, 2010
- LOCATOR:
CordeX Exploration Company
573 E. 2nd Street
Reno, NV 89502
- TIES:
The SE Corner (2) of SWS 34 bears approximately 11,333' N38°W from the SW Corner of Section 6, T18N-R53E, Eureka County, Nevada.
The NE Corner (1) of SWS 34 is common with the NW Corner of existing SWS 32 lode mining claim.



DOC # 0215063
06/07/2010 01:40 PM
Official Record
Recording Requested By
Eureka County - NV
Mike Rebaletti - Recorder
Fee: \$604.00 Page: 1 of 01
RPT: Recorded By:
Book: Page: 0000



CORDEX EXPLORATION CO.
SWS 33-72
Lode Mining Claims
Projected Secs. 22, 23, 26, 27, 34 and 35,
T19N-R52E, M.D.B.&M.
Eureka County, Nevada
Drawn By: J.A.T. Date: May 6, 2010
Drawing: 257-SWS33-72Claims.dwg Revised:
Layout: 500sc