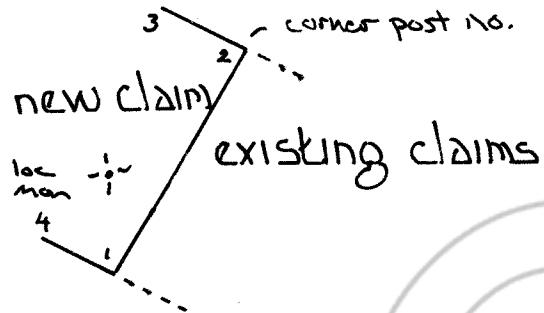


Situated in the Lone Mountain portion of the Eureka Mining District, Eureka Co., Nevada in unsurveyed T.20N., R.51E., M.D.B.M. Sections 7 & 18

All Location Monuments and claim corners are 1 1/2" x 1 1/2" x 4' wood posts

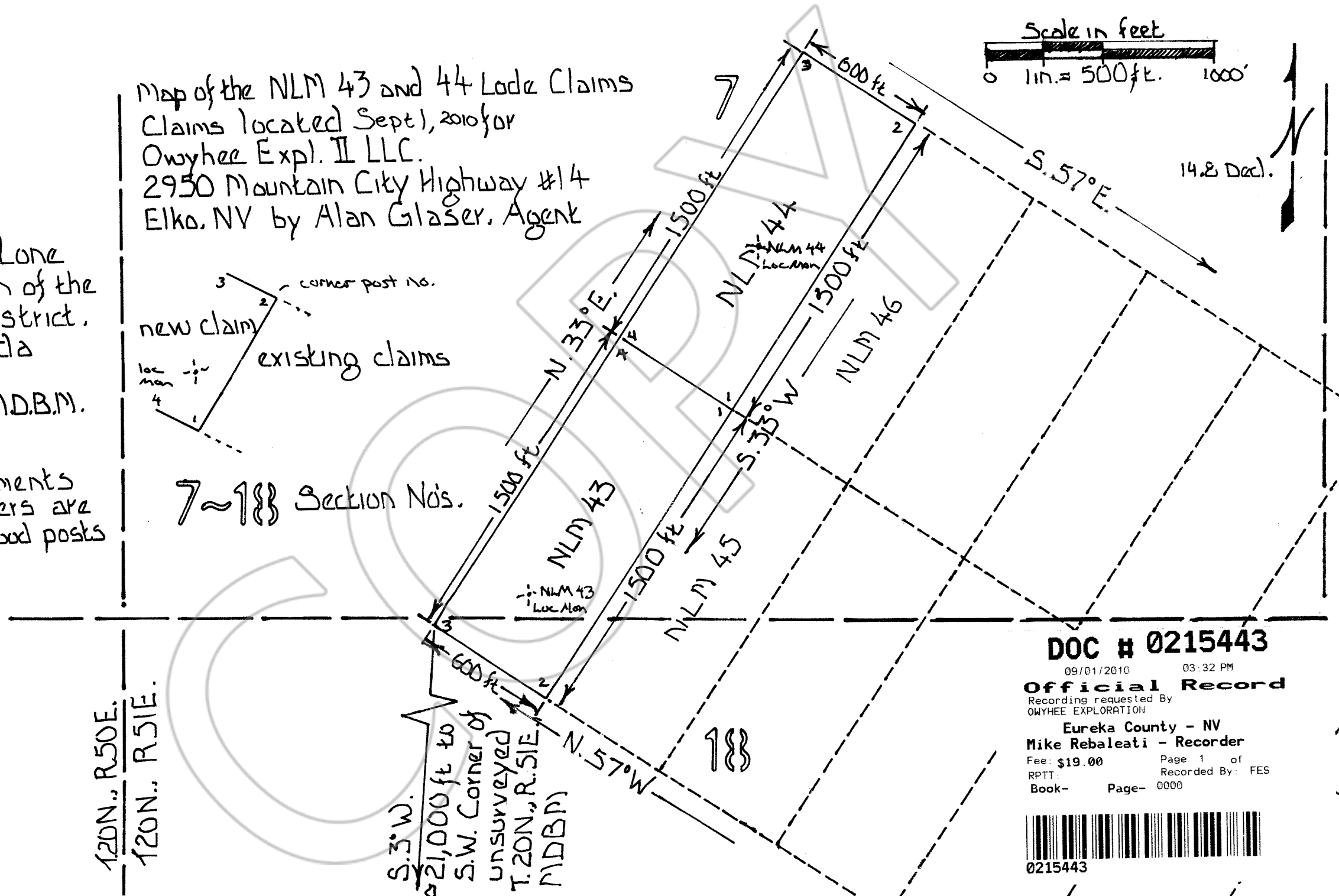
Map of the NLM 43 and 44 Lode Claims  
 Claims located Sept 1, 2010 for  
 Owyhee Expl. II LLC.  
 2950 Mountain City Highway #14  
 Elko, NV by Alan Glaser, Agent



7~18 Section Nos.

120N., R.50E.  
 120N., R.51E.

S.3°W.  
 21,000 ft to  
 S.W. Corner of  
 unsurveyed  
 T.20N., R.51E.  
 (M.D.B.M.)



DOC # 0215443

09/01/2010 03:32 PM

Official Record

Recording requested by  
 OWYHEE EXPLORATION

Eureka County - NV

Mike Rebaleati - Recorder

Fee: \$19.00 Page 1 of

RPTT: Recorded By: FES

Book- Page- 0000



0215443