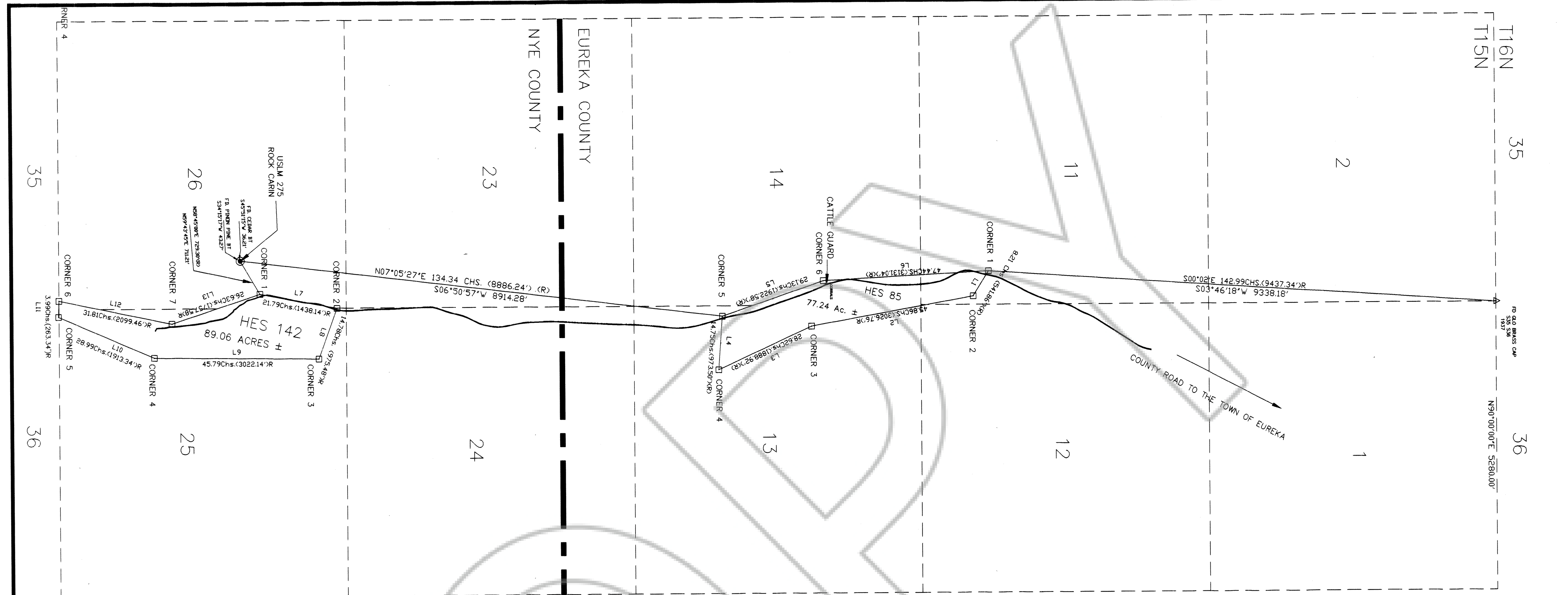


© 2006 The Authors  
Journal compilation © 2006 Blackwell Publishing Ltd

FAIRM PRODUCTS • NEW HOPE, MINNESOTA

Marken Ranch



LINE			LINE	TABLE	BEARING
			LENGTH		
HES 85					
L1	5040.19	558.26,17.7			
L2	3062.20	501.51,17.1E			
L3	1884.85	524.4,19.1E			
L4	988.00	518.9,49.42E			
L5	196.3,69	505.9,49.42E			
L6	3042.11	503.70,5.4E			
HES 142					
L7	1439.45	510.34,49.5E			
L8	3950.17	569.51,07.7E			
L9	9850.51	503.53,28.7E			
L10	1914.63	523.2,24.54E			
L11	236.69	588.30,17.1E			
L12	2188.78	511.47,4.4E			
L13	1706.06	518.17,23.5E			

HES 142.

---

CORNER 1  
FD CORNER 1  
SINGLE STONE  
TYPE & DIMENSIONS AS  
CORNER 1  
NO MARKS VISIBLE

CORNER 2  
FD CORNER 2  
2 HES 142  
SINGLE MND STONE  
WEST SIDE DIRT ACCESS RD

CORNER 3  
FD CORNER 3  
3 HES 142  
SINGLE MND STONE WITH EARTH&STONE MOUND

CORNER 4  
FD CORNER 4  
4 HES 142  
SINGLE MND STONE WITH MDS  
BR PER ORIGINAL SURVEY NOTES

CORNER 5  
FD CORNER 5  
5 HES 142  
SINGLE MND STONE WITH MDS  
B1 PER ORIGINAL SURVEY NOTES

CORNER 6  
FD CORNER 6  
6 HES 142  
SINGLE MND STONE WITH MDS

CORNER 7  
FD CORNER 7  
SINGLE STONE  
TYPE & DIMENSIONS PER  
ORIGINAL SURVEY NOTES

AND PLATS

LEGEND

ORIGINAL SECTION LINES  
HES BOUNDARY  
COUNTY LINE

□	FOUND ORIGINAL HES MONUMENT
(R)	RECORD
MDS	MOUND OF STONE
FD	FOUND
BR	BEARING ROCK
BT	BEARING TREE

## NOTES

THE PURPOSE OF THIS MAP IS TO DEFINE THE LOCATION OF HES 85 & HES 142,  
AND TO DOCUMENT THEIR ACTUAL LOCATIONS FOLLOWING THE BOTTOM LANDS TRAVERSED  
BY COPENHAGEN CREEK.

THESE PRIVATE LANDS ARE LOCATED WITHIN AN UNSURVEYED TOWNSHIP IN BOTH EUREKA AND NYE COUNTIES, STATE OF NEVADA.

THE SECTION LINES SHOWN WITHIN T.15N.R.49E. MDB&M ARE APPROXIMATE, AND ARE SHOWN BASED ON THE BUREAU OF LAND MANAGEMENT AND ORIGINAL PLSS RECORDS.

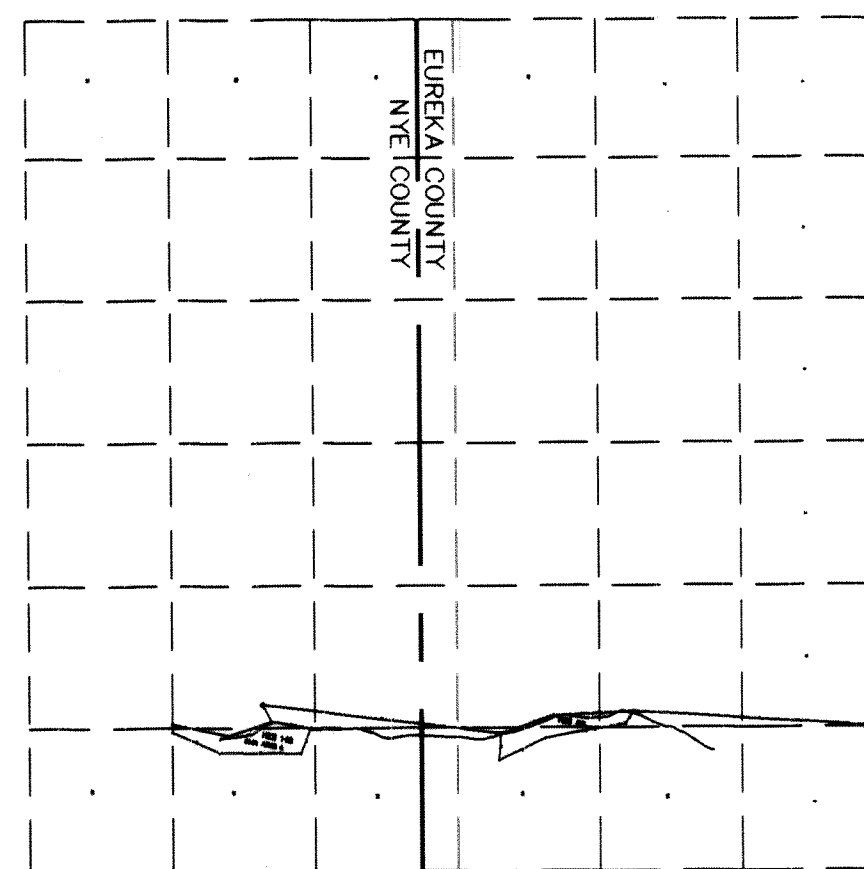
THE COUNTY LINE BETWEEN EUREKA AND NYE COUNTIES IS SHOWN BASED ON NRS 243.275 WHICH DEFINES THE LEGAL COUNTY BOUNDARY LINES.

ALL BEARINGS AND DISTANCES ARE MEASURED UNLESS OTHERWISE NOTED.

HES 85

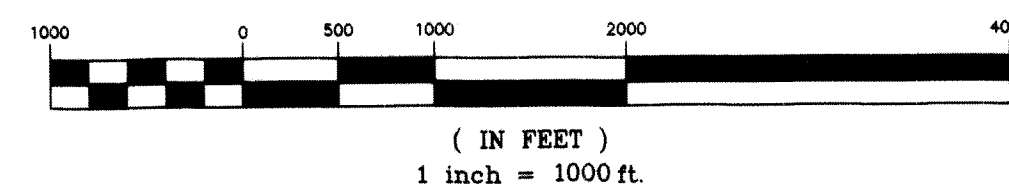
CORNER 1	FD CORNER 1 SINGLE MND STONE WITH MDS 1 HES 85 FD BR(S) PER ORIGINAL SURVEY NOTES
CORNER 2	FD CORNER 2 4 HES 85 WITH X ON TOP SINGLE MND STONE WITH MDS FD BT PER ORIGINAL SURVEY NOTES
CORNER 3	FD CORNER 3 3 HES 85 WITH X ON TOP SINGLE MND STONE WITH MDS FD BR(S) PER ORIGINAL SURVEY NOTES
CORNER 4	FD CORNER 4 4 HES 85 WITH X ON TOP SINGLE MND STONE
CORNER 5	FD CORNER 5 SINGLE MND STONE 5 HES 85
CORNER 6	FD CORNER 6 SINGLE STONE TYPE & DIMENSIONS PER ORIGINAL SUR

NTS



UNSURVEYED TOWNSHIP  
T.15N.R.49E. MDB&M

GRAPHIC SCALE



## RECORDS

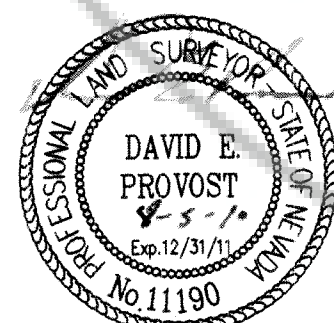
1. PLSS SURVEY RECORDS
2. HES SURVEY NOTES AND PLATS
3. BLM PROTRACTION DIAGRAM
4. BLM MASTER TITLE PLAT
5. DEED H.E. SURVEY 142, CARSON CITY 014082 PATENT No. 1019483
6. DEED H.E. SURVEY 85, CARSON CITY 07623, PATENT No. 489452
7. NRS 242.275, NORTH BOUNDARY NYE COUNTY, NEVADA.

SURVEYOR'S CERTIFICATE

I, DAVID E. PROVOST, A PROFESSIONAL LAND SURVEYOR LICENSED IN THE  
STATE OF NEVADA, CERTIFY THAT:

1. THIS PLAT REPRESENTS THE RESULTS OF A SURVEY CONDUCTED UNDER MY DIRECT SUPERVISION AT THE INSTANCE OF VICKIE BUCHANAN.
2. THE LANDS SURVEYED LIE WITHIN SECTIONS 12,25,36, T.15N.,R.49E. MDB&M. AND THE SURVEY WAS COMPLETED ON JULY 28, 2010.
3. THIS PLAT COMPLIES WITH THE APPLICABLE STATE STATUTES AND ANY LOCAL ORDINANCES IN EFFECT ON THE DATE THAT THE GOVERNING BODY GAVE ITS FINAL APPROVAL.
4. THE MONUMENTS DEPICTED ON THE PLAT ARE OF THE CHARACTER SHOWN, OCCUPY THE POSITIONS INDICATED AND ARE OF SUFFICIENT NUMBER AND DURABILITY.

DAVID E. PROVOST, PLS



BASIS OF BEARING: GPS OCCUPATION OF FOUND MONUMENTS  
SHOWN ON HES 85 SECTIONS 35 & 36 AND  
CORNER # 1 OF HES 85

FILED AT THE REQUEST OF  
MOUNTAIN HIGH SURVEYING

DOC # 0215465

09/10/2010 11:38 AM  
**Official Record**  
Recording requested By

Eureka County - NV

Mike Rebaleati - Recorder  
Fee: \$21.00 Page 1 of  
RPTT: Recorded By: FE  
Book- Page- 0000



0215465

FILE NO.

MOUNTAIN HIGH SURVEYING  
1500 MURRY STREET ELY, NV 89301  
PH: 775-289-6722

RECORD OF SURVEY

SHOWING  
HES 85 & HES 142  
FOR  
THE MARTIN RANCH

ANTELOPE VALLEY, EUREKA & NYE COUNTY, NV

T15N R49E MDBM