

Official Record

Recording requested by AMERICA'S GOLD EXPLORATION INC

Eureka County - NV

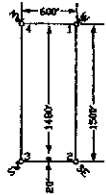
Mike Rebaleati - Recorder

Fee \$34.00 Page 1 of RPTT. Recorded By: LLH

Book- Page- 0000

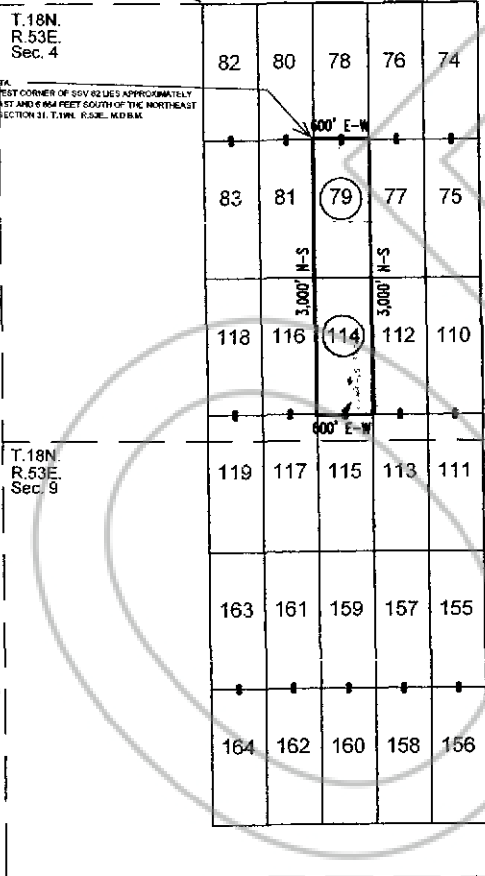


TYPICAL CLAIM



THE POINT DATA: THE NORTHWEST CORNER OF SSV 82 LIES APPROXIMATELY 7,136 FEET EAST AND 3,364 FEET SOUTH OF THE NORTHEAST CORNER OF SECTION 31, T.18N., R.53E., M.D.B.M.

THE POINT DATA: THE NORTHWEST CORNER OF SSV 82 LIES APPROXIMATELY 5358 FEET EAST AND 8164 FEET SOUTH OF THE NORTHEAST CORNER OF SECTION 31, T.18N., R.53E., M.D.B.M.



LOCATION DATES:
September 3, 2010 - SSV 79 and SSV 114

NOTES:
LOCATION MONUMENTS SET 20' FROM CLAIM END CENTERLINES. ALL LOCATION MONUMENTS AND CLAIM POSTS ARE 2"x2"x4' WOODEN STAKES.

DASHED SECTION LINES INDICATE PROJECTED SECTIONS.

Americas Gold Exploration, Inc.
8175 S. Virginia St., Ste. 200, Park Valley, NV 89411
SSV #77, #114 Lode Claims
T.18N., R.53E.; Eureka County, Nevada