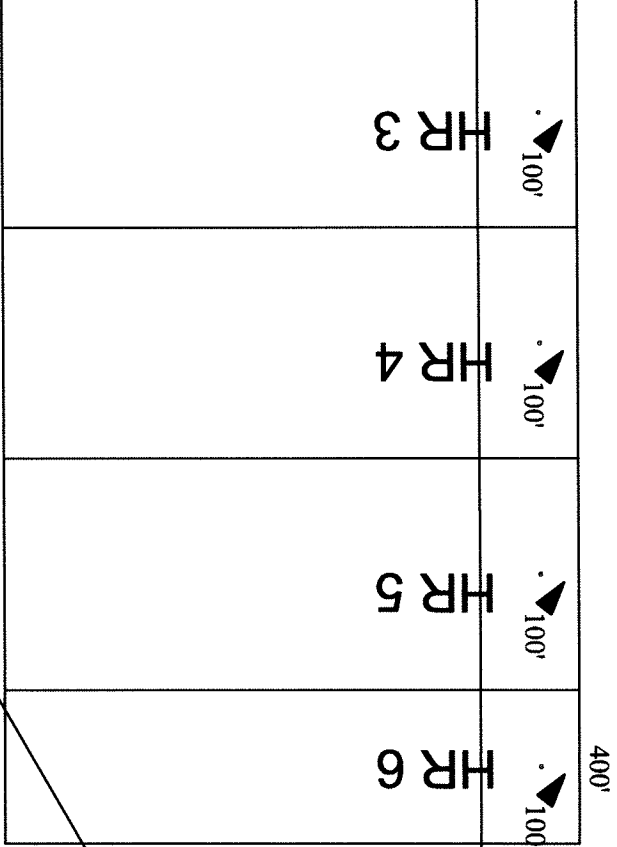
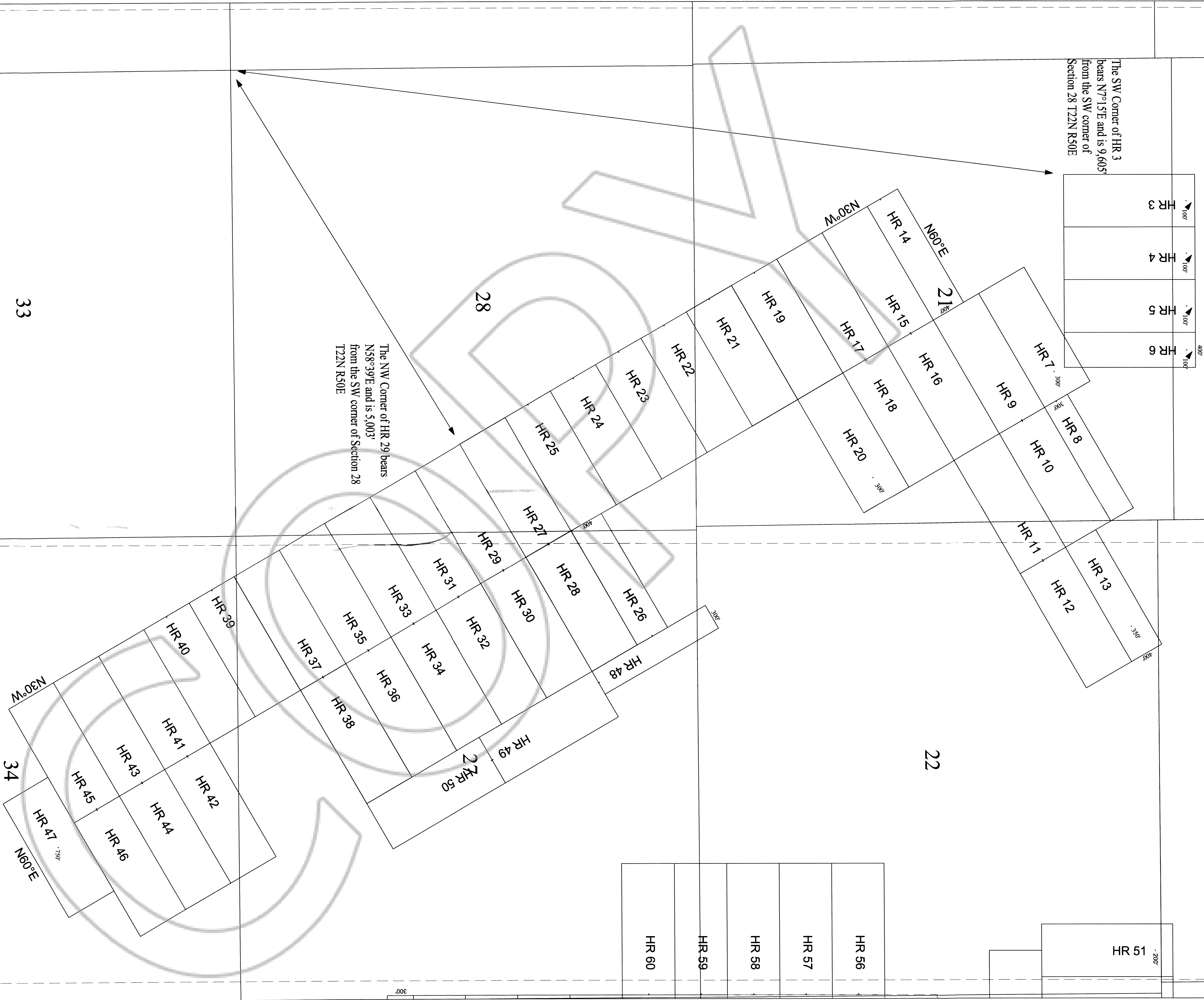


The SW Corner of HR 3 bears N7°15'E and is 9,605' from the SW corner of Section 28 T22N R50E



The NW Corner of HR 29 bears N58°39'E and is 5,003' from the SW corner of Section 28 T22N R50E

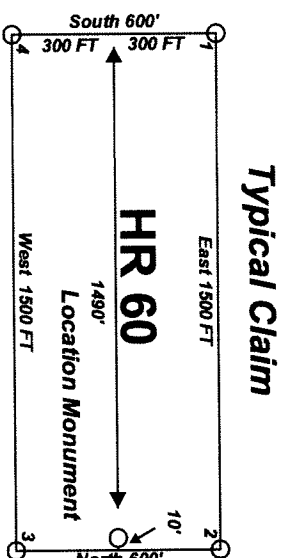
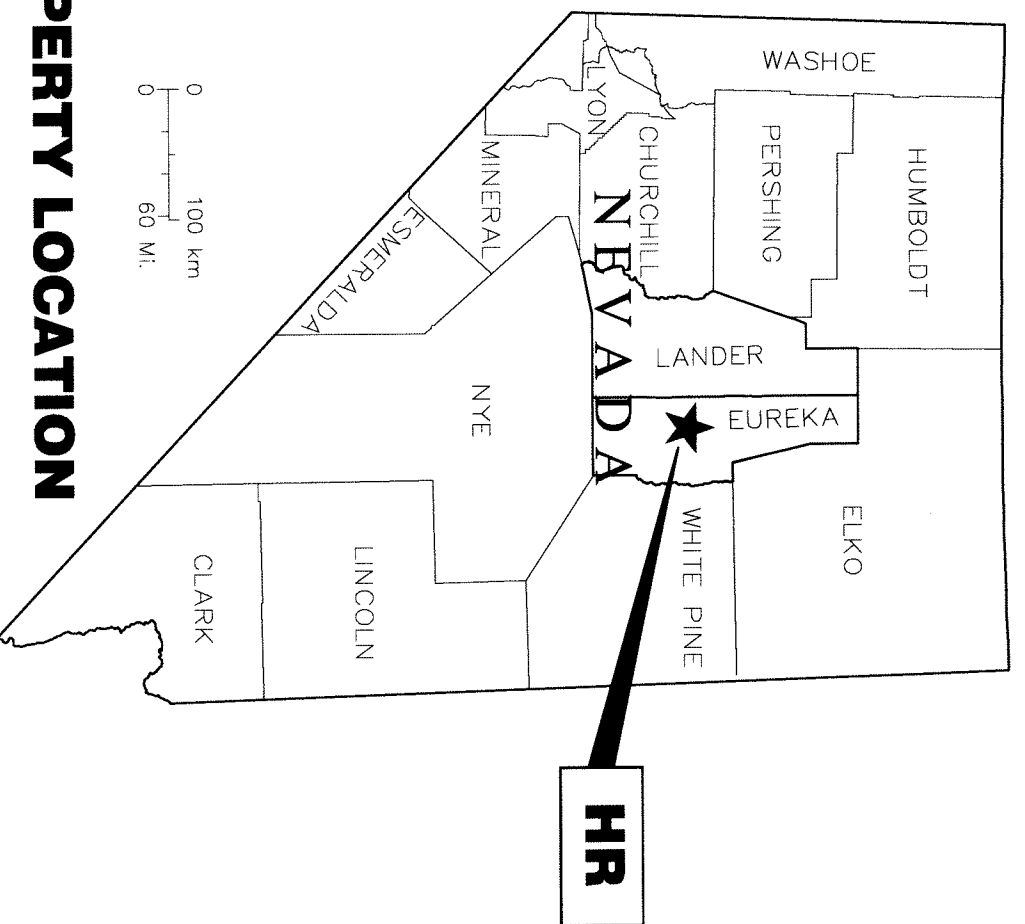


**Lode Claim Location Map
for HR 1-60 & 71-84
Sheet 1 of 3**

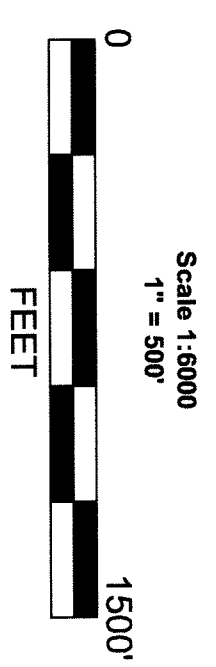
"HR" lode claims 14-19, 21-25, 27-47 and 71-91 were located on 7/20/2010 and
 "HR" lode claims 3-13, 20, 26, and 48-50 were located on 7/21/2010 and
 "HR" lode claims 1, 2, and 82-94 were located on 7/22/2010 in

Sections 4, 14-16, 21-23, 26-28 & 34 Township 22 North, Range 50 East Eureka County, Nevada

Locator:
 White Knight Gold (U.S.) Inc.
 1595 Meadow Wood Lane, Suite 3
 Reno NV, 89502

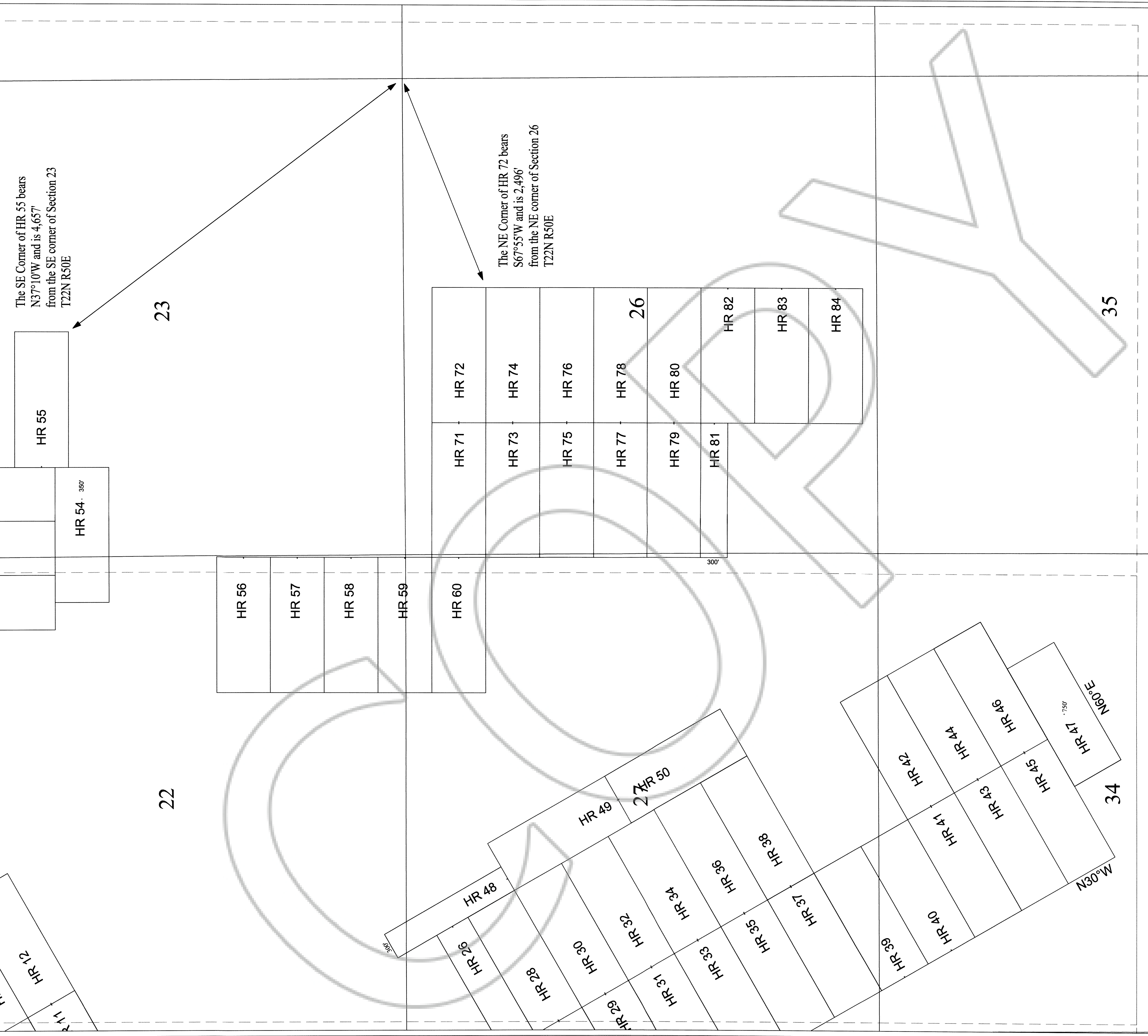


Notes:
 Location Monuments are set 10' from claim end lines unless noted otherwise. All location and corner monuments are 2" x 4" wooden posts with scribed metal tags. All claims are 600' by 1500' unless noted otherwise.

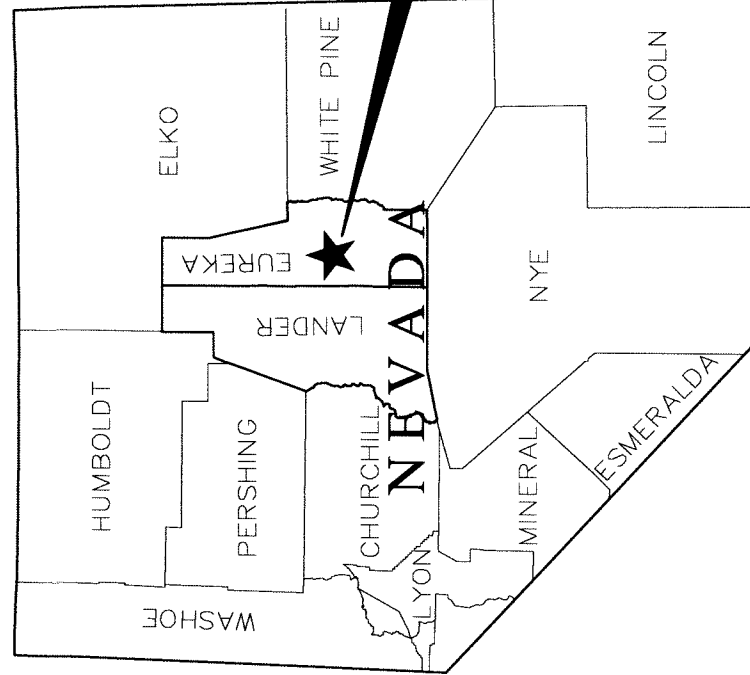


MINING CLAIM LOCATION MAP	
HR 1-34	Lode Mining Claims
White Knight Gold (U.S.) Inc. 1595 Meadow Wood Lane, Suite 3 Reno NV, 89502	
HR 1-84 N27Z17R.dwg	Surveyed by: T&T Exploration L.L.C.
NAZ 12/2010	NAZ 12/2010
Drawn By: GIS Land Services	Drawn By: GIS Land Services
775-746-8893	775-746-8893

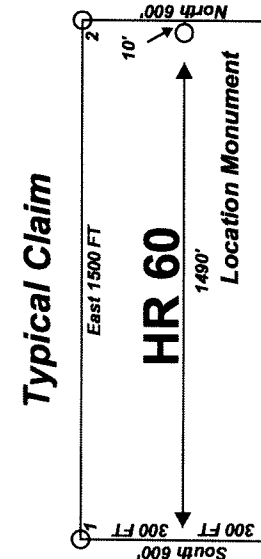
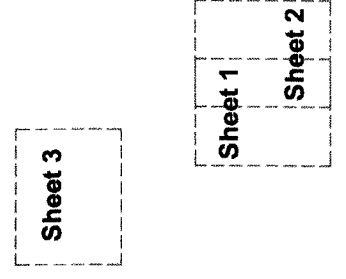
DOC # 0215674
 02.15.10
Official Record
 Eureka County - Recorder
 Mike Reistleil - Recorder
 Registered By: FES
 Page: 0000
 Book: 0215674



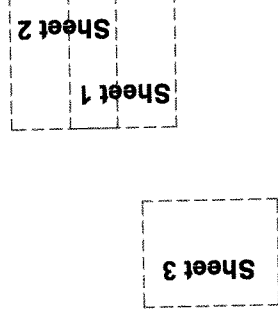
**Lode Claim Location Map
for HR 1-60 & 71-84
Sheet 2 of 3**



"HR" lode claims 14-19, 21-25, 27-47 and 71-81 were located on 7/20/2010 and
 "HR" lode claims 3-13, 20, 26, and 48-60 were located on 7/21/2010 and
 "HR" lode claims 1, 2, and 82-84 were located on 7/22/2010 in
 Sections 4, 14-16, 21-23, 26-28, & 34 Township 22 North, Range 50 East Eureka County, Nevada



**Lode Claim Location Map
for HR 1-60 & 71-84
Sheet 3 of 3**



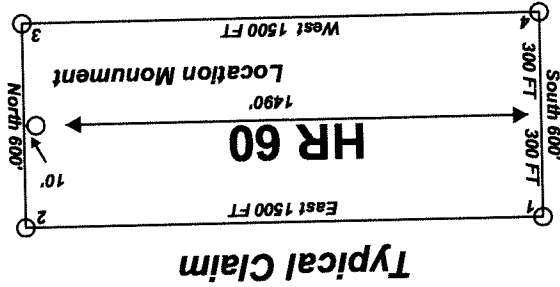
"HR" lode claims 14-19, 21-25, 27-47 and 71-81 were located on 7/20/2010 and

"HR" lode claims 3-13, 20, 26, and 48-60 were located on 7/21/2010 and

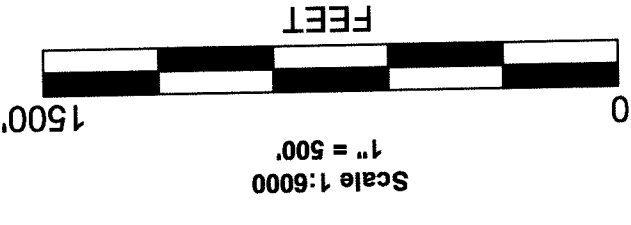
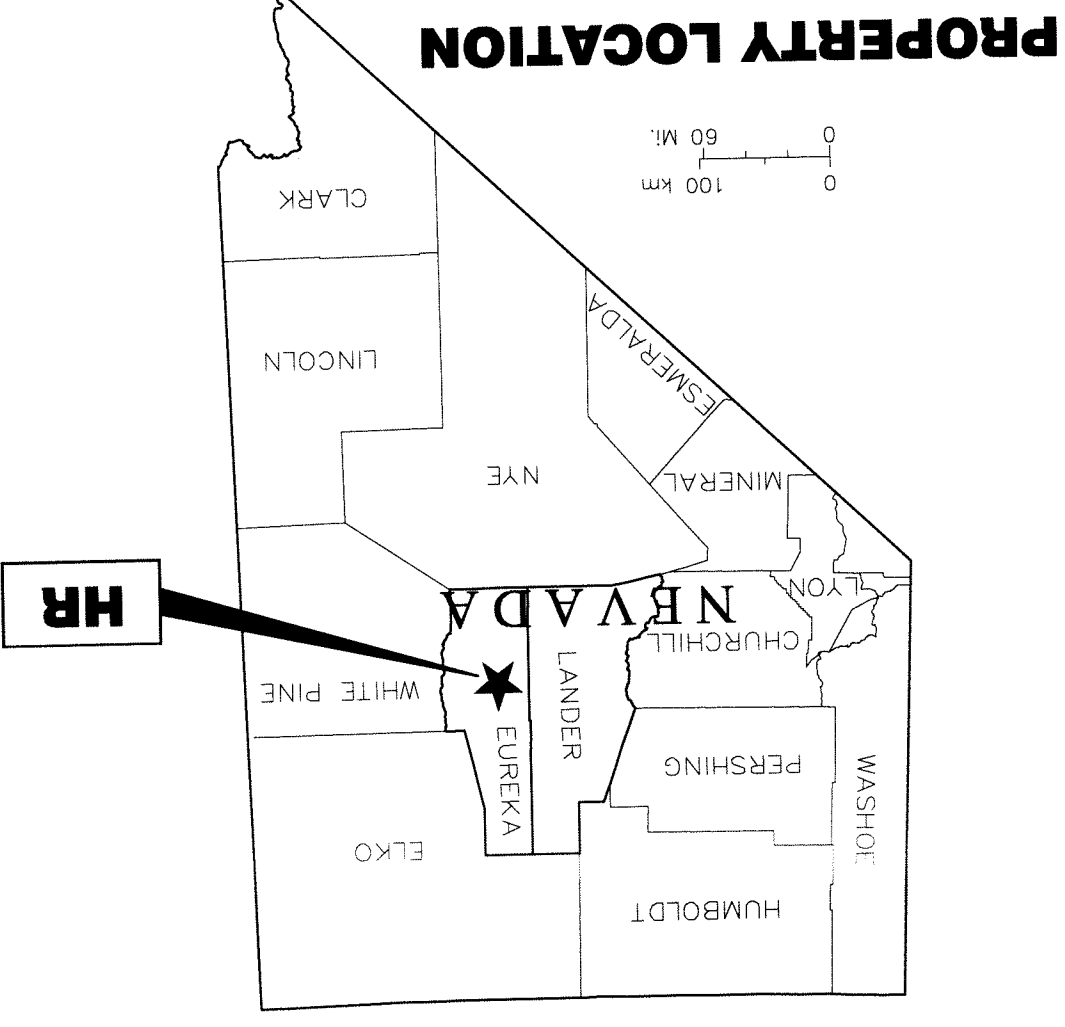
"HR" lode claims 1, 2, and 82-84 were located on 7/22/2010 in

Sections 4, 14-16, 21-23, 26-28, & 34 Township 22 North, Range 50 East Eureka County, Nevada

Locator:
White Knight Gold (U.S.) Inc.
1595 Meadow Wood Lane, Suite 3
Reno Nv. 89502



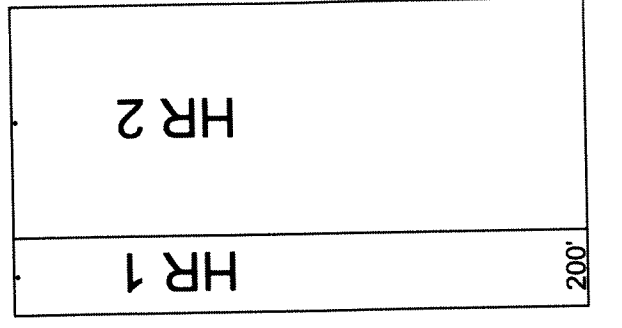
Notes:
Location Monuments are set 10' from claim end lines unless noted otherwise. All location and corner monuments are 2" X 4" wooden posts with scribed metal tags. All claims are 600' by 1500' unless noted otherwise.



MINING CLAIM LOCATION MAP
HR 1-84
Lode Mining Claims
White Knight Gold (U.S.) Inc.
1595 Meadow Wood Lane, Suite 3
Reno Nv. 89502
HR 1-84, N27Z11E.dwg
Surveyed By: T&T Exploration L.C.
NAD 1927, Zone 11; Units Feet
September 16, 2010
Drawn By: GIS Land Services
775-746-8803



4



The SW Corner of HR 1
bears S84°28'E and is 11,596
from the NW corner of
Section 6 T22N R50E

22N50E
23N50E

32

31

33

5

6

