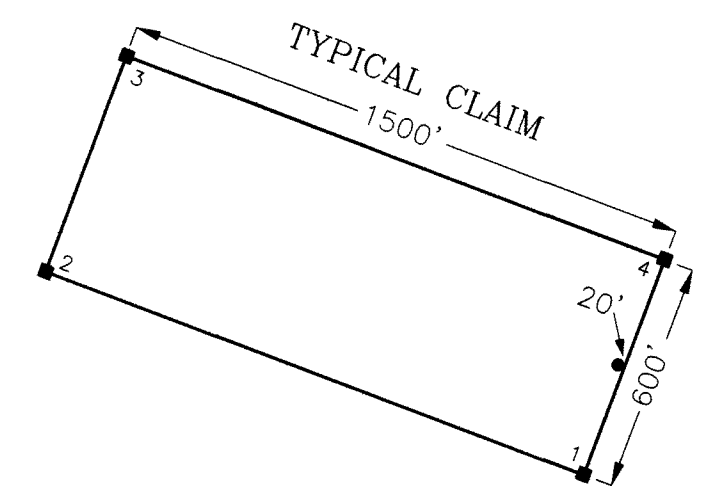


EXPLANATION

- Monuments of Location are set with 2"x2"x4' wood posts.
 - Claim corners are set with 2"x2"x4' wood posts.
- All claims measure 600' x 1500'.
Monuments of Location are set 20' into claim.
- LOCATION DATE:
BC 1-28 September 1, 2010

LOCATOR:
Cordex Exploration Company
573 E. 2nd Street
Reno, NV 89502

TIE:
The SE Corner (3) of BC 28 bears approximately 3132'
N78°W from Combs Peak located in Unsurveyed Sec. 20,
T18N-R52E, Eureka County, Nevada



500 0 500 1000
SCALE IN FEET

DOC # 0215918

Official Record
Recorded by Request of
CORDEX EXPLORATION CO.
Eureka County - NV
Mike Rebaletti - Recorder
Fee: \$814.00 Page: 1 of 2
Date: 9/1/10
Book: 0000 Recorded by: FES



0215918

CORDEX EXPLORATION CO.

BC 1-28 10/2
Lode Mining Claims

Unsurveyed Secs. 8 & 17-20, T18N-R52E, M.D.B.&M.
Eureka County, Nevada

Drawn By: J.A.T.
Drawing: BC1-28.dwg
View:
Layout: 500sc

Date: Sept. 9, 2010
Revised:

R 52 E

EXISTING CLAIMS

T 18 N

EXISTING CLAIMS

EXPLANATION

- Monuments of Location are set with 2"x2"x4' wood posts.
 - Claim corners are set with 2"x2"x4' wood posts.
- All claims measure 600' x 1500' except BC 45 which measures 300' x 1500'.

Monuments of Location are set 20' into claim.

LOCATION DATES:

BC 29-40	September 13, 2010
BC 41-44	September 15, 2010
BC 45	September 21, 2010
BC 46-54	September 14, 2010

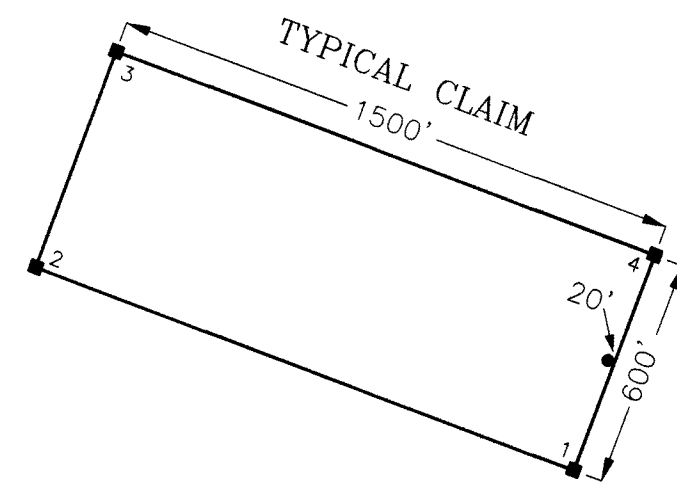
LOCATOR:

CordeX Exploration Company
573 E. 2nd Street
Reno, NV 89502

TIES:

The SW Corner (4) of BC 46 bears approximately 7994' N3°W from Combs Peak located in Unsurveyed Sec. 20, T18N-R52E, Eureka County, Nevada

The NW Corner (1) of BC 46 is common with the NE Corner of existing BC 2 lode mining claim.



DOC # 0215918

Official Record
Recording requested by
CORDEX EXPLORATION CO.

Eureka County - NV
Mike Rebealeti - Recorder
Fee \$814.00 Page 2 of 2
Book- Recorder Book- FTS
Book- Page- 0000



500 0 500 1000
SCALE IN FEET

CORDEX EXPLORATION CO.

BC 29-54
Lode Mining Claims

Unsurveyed Secs. 5, 7-9, T18N-R52E, M.D.B.&M.
Eureka County, Nevada

Drawn By: J.A.T.
Drawing: BC29-54.dwg
Layout: 500ec

Date: October 7, 2010

Combs Peak
DENIO 8631