

33

34

T26N R48E
T25N R48E

GN 45	• GN 46
	• GN 48
	• GN 50
	• GN 52

4

• GN 144
• GN 145
• GN 146
• GN 147
• GN 148

3

2

• GN 84	GN 94	• GN 95
---------	-------	---------

The SW Corner of GN 95
bears N12°25'W and is
4693' from the SE corner
of Section 10 T25N R48E

GN 138	•
--------	---

11

The SW Corner of GN
138 bears N10°01'E and
is 2827' from the SW
corner of Section 11 T25N
R48E

9

10

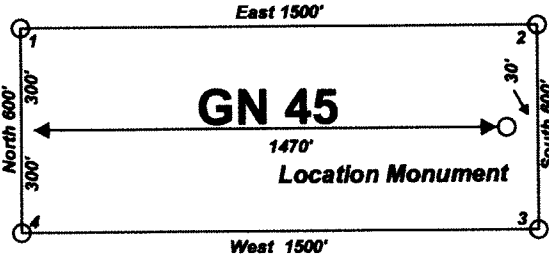
"GN" lode claims 45, 46, 48, 50, 52, 84, 94, 95, 138 and 144-148 were located on September 3, 2010 in Sections 3, 4 and 9-11 Township 25 North Range 48 East in Eureka County, Nevada.

Locator:
Pyramid Lake LLC
P.O. Box 6945
Incline Village, NV 89450

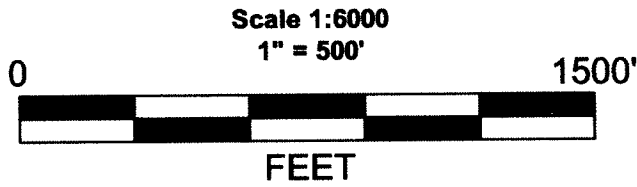


Notes:
Location Monuments are set 30' from claim end lines unless noted otherwise. All location and corner monuments are 2" X 2" X 4' wooden posts with scribed metal tags. All claims are 600' by 1500' unless noted otherwise. All bearings are based on UTM North.

Typical Claim



Claim Location Map for Lode Claims
GN 45, 46, 48, 50, 52, 84, 94, 95, 138 and 144-148
Sheet 1 of 1



MINING CLAIM LOCATION MAP GN 45, 46, 48, 50, 52, 84, 94, 95, 138 and 144-148 Lode Mining Claims
Pyramid Lake LLC P.O. Box 6945 Incline Village, NV 89450
GN_ClaimMap_N27211.DWG October 18, 2010 Drawn By: G.I.S. Land Services
Datum: 1927 Projection: UTM Zone 11 Units: Feet

DOC # 0215990
11/18/2010 03:26 PM
Official Record
Recording requested By:
Pyramid Lake LLC
Eureka County - NV
Mike Rebaletti - Recorder
Fee: \$214.00 Page 1 of 1
Recorded By: PES
Book- Page- 0000
0215990