

S 45.5 W
57 feet to common corner
Sec. 1 and Sec. 12, T21N R50E;
Sec. 6 and Sec. 7, T21N R51E, MDB&M

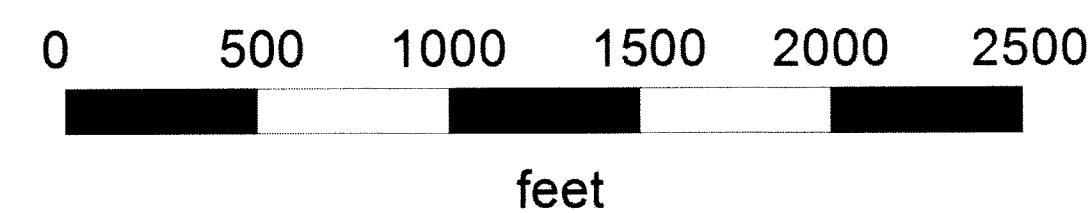
Sec. 12

Sec. 7

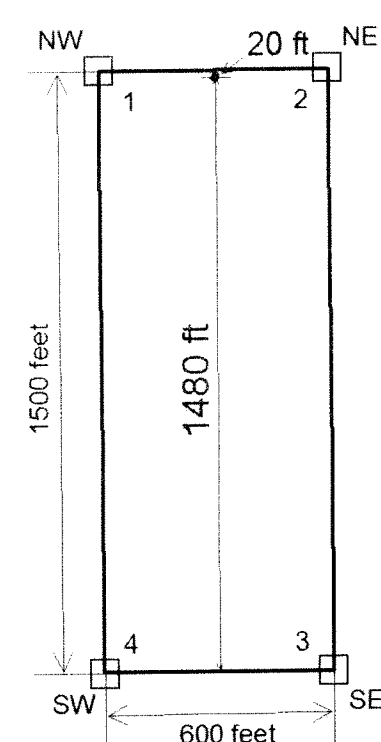
Sec. 8



Scale: 1 inch = 500 feet



TYPICAL CLAIM



LEGEND

- claim corner
- location monument

NOTES: tie point SE corner of RW 114 to common corner
Sec. 1 and Sec. 12, T21N R50E;
Sec. 6 and Sec. 7, T21N R51E, MDB&M

All monuments are 2 inch by 2 inch by 4 foot long wooden posts with a scribed metal tag

Location Dates:

1 September 2010 - RW 94-96, RW 103 - RW 112, RW 165 - 180, RW 182, RW 184, RW 186,
RW 188, RW 190, RW 192, RW 194, RW 196, RW 198, RW 113-114, RW 199-206

2 September 2010 - RW RW 97-98, RW 115-124, RW 207-234

RW claims

Unknown Mining District
Eureka County, Nevada

Sec. 36, T22N R50E; Sec. 31, T22N R51E;
Sec. 1, T21N R50E, Sections 4, 5, 6, T21N R51E, MDB&M

Sheet 2 of 2

Located By: Gregory T. Hill
and Robert G. Cuffney, agents for:

Harvest Gold Corporation (US)

59 Damonte Ranch Parkway, B234
Reno, Nevada 89521

DOC # 0216116
11/19/2010 08:45 AM
Official Record
Recorded & Indexed By:
HARVEST GOLD CORP.
Eureka County - NV
Mike Rebletti - Recorder
Fee \$1,883.00 Page 12 of 2
RPT1 Recorded By: FES
Book- Page- 0000
0216116

Date: November 17, 2010

Drawn by: G. Hill