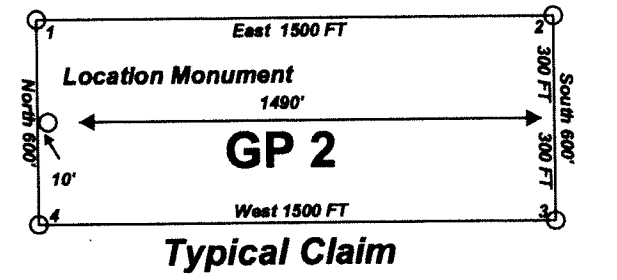
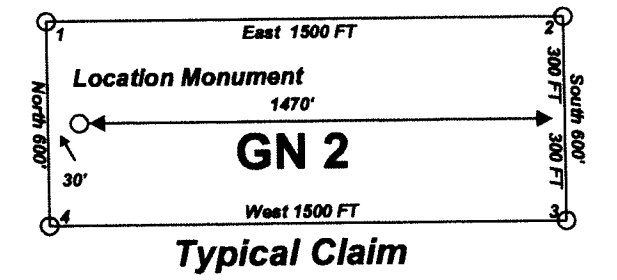


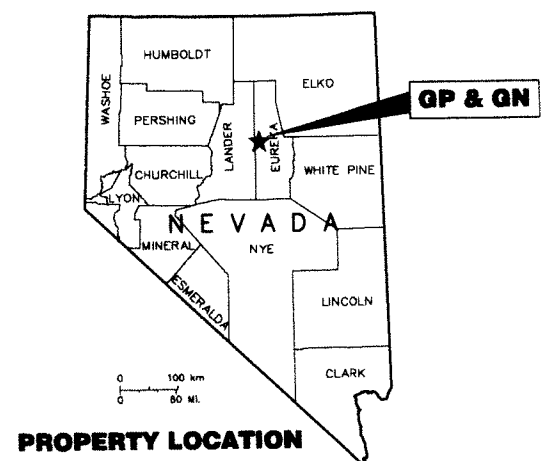
Claim Location Map for
Lode Claims
GP 1-46 and GN 200-234
Sheet 1 of 1



Notes:
GP Location Monuments are set 10' from claim end lines unless noted otherwise. All location and corner monuments are 2" X 2" X 4' wooden posts with scribed metal tags. All claims are 600' by 1500' unless noted otherwise. All bearings are based on UTM North.

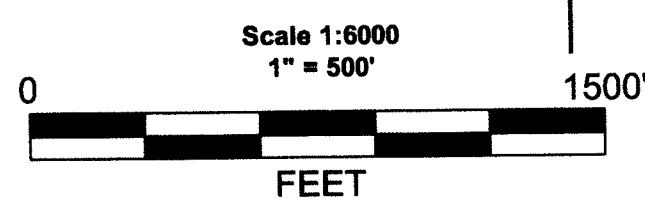


Notes:
GN Location Monuments are set 30' from claim end lines unless noted otherwise. All location and corner monuments are 2" X 2" X 4' wooden posts with scribed metal tags. All claims are 600' by 1500' unless noted otherwise. All bearings are based on UTM North.



"GP" lode claims 1-43 were located on September 18, 2010, "GP" lode claims 44-46 were located on October 1, 2010 and "GN" lode claims 200-234 were located on September 3, 2010 in Sections 1-2 and 11-12 in Township 25 North Range 48 East, Sections 1 and 12-13 in Township 25 North Range 48 1/2 East, and Sections 7 and 18 in Township 25 North Range 49 East in Eureka County, Nevada.

Locator:
Pyramid Lake LLC
P.O. Box 6945
Incline Village, NV 89450



MINING CLAIM LOCATION MAP GP 1-46 and GN 200-234 Lode Mining Claims
Pyramid Lake LLC P.O. Box 6945 Incline Village, NV 89450
GN-GP_ClaimMap_UTM27Z11.DWG October 18, 2010 Drawn By: G.I.S. Land Services
Surveyed By: T&T Exploration L.L.C. Datum: 1927 Projection: UTM Zone 11 Units: Feet

DOC # 0216200

Official Record
Recording requested by
Pyramid Lake LLC
Eureka County - NV
Mike Rebaletti - Recorder
Fee \$1,219.00
Page 1 of 1
Book- Page- 0000



T26N R48E
T25N R48E T25N R48 1/2E

GP 1 GP 2

GP 11 GP 12

GP 3 GP 4

GP 13 GP 14

GP 5 GP 6

GP 15 GP 16

GP 7 GP 8

GP 17 GP 18

GP 9 GP 10

GP 19 GP 20

GP 31

GP 21 GP 22

GP 36

GP 32

GP 23 GP 24

GP 37

GP 33

GP 25 GP 26

GP 38

GP 34

GP 27 GP 28

GP 39

GP 35

GP 29 GP 30

GP 40

GN 200 GN 206

GN 212 GN 218

GN 224

GN 227 GN 230

GN 201 GN 207

GN 213 GN 219

GN 225

GN 228 GN 231

GN 233 GN 234

GN 202 GN 208

GN 214 GN 220

GN 226

GN 229 GN 232

GN 203 GN 209

GN 215 GN 221

GN 204 GN 210

GN 216 GN 222

GN 205 GN 211

GN 217 GN 223

The SW Corner of GP 39
bears N71°02'E and is
314' from the SE corner
of Section 1 T25N R48E

T25N R48E
T25N R48.5E

T25N R48.5E
T25N R49E