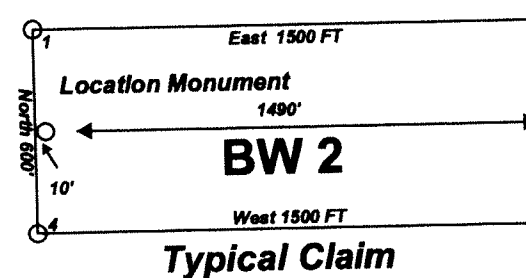
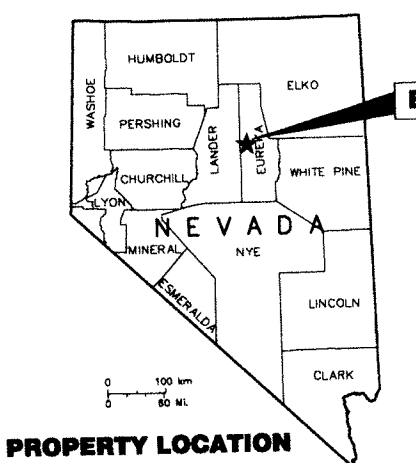


Claim Location Map for  
Lode Claims  
BW 1-72  
Sheet 1 of 1

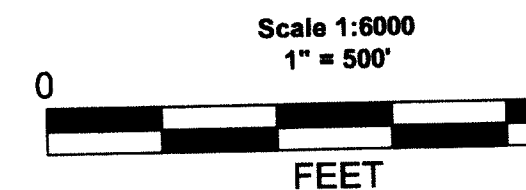


Notes:  
Location Monuments are set 10' from claim end lines unless noted otherwise. All location and corner monuments are 2" X 2" X 4' wooden posts with scribed metal tags. All claims are 600' by 1500' unless noted otherwise. All bearings are based on UTM North.



"BW" lode claims 1-34 were located on September 18, 2010 and "BW" lode claims 35-72 were located on September 19, 2010 in Sections 4-9 in Township 25 North Range 49 East in Eureka County, Nevada.

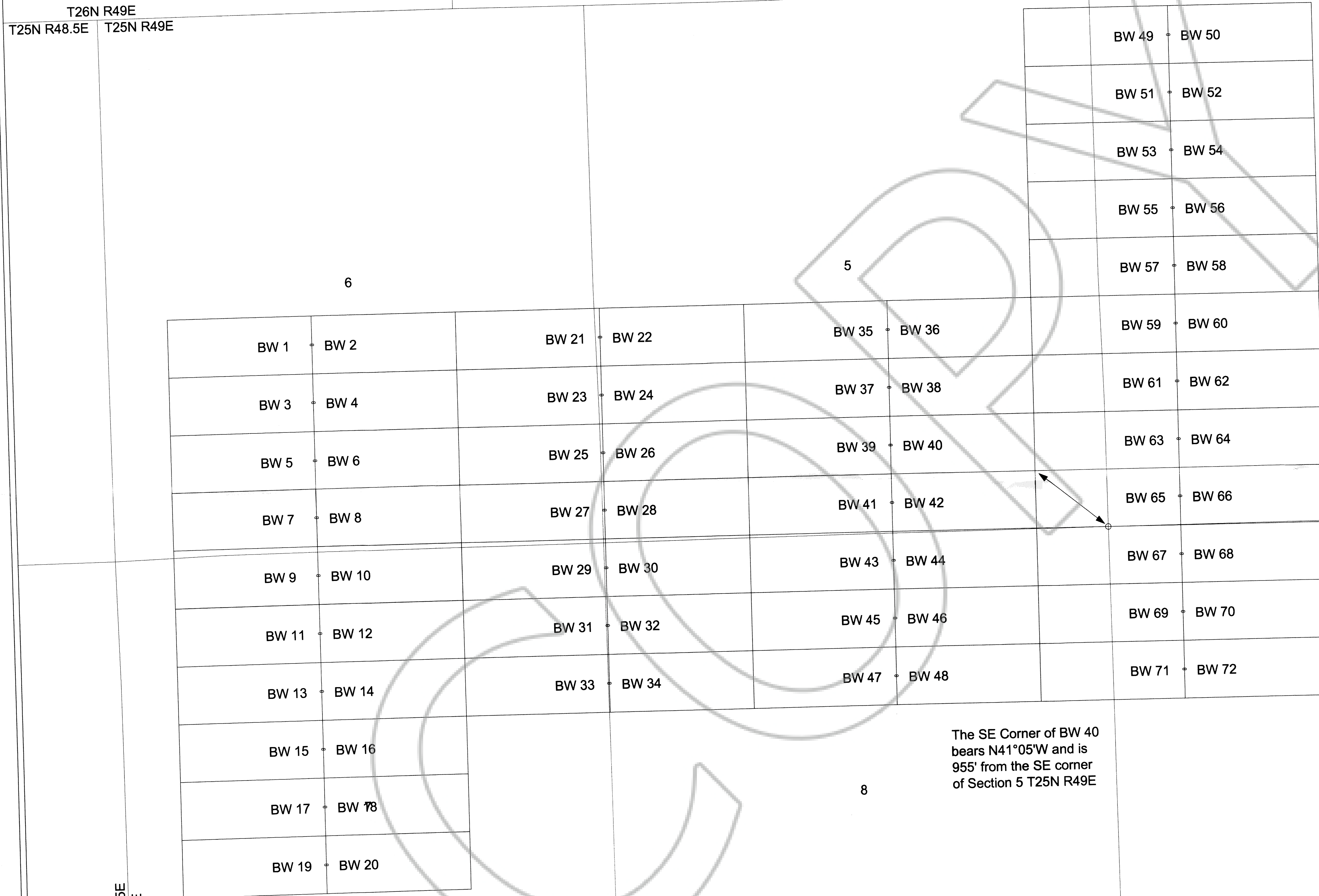
Locator:  
Pyramid Lake LLC  
P.O. Box 6945  
Incline Village, NV 89450



MINING CLAIM LOCATION MAP BW 1-72 Lode Mining Claims Pyramid Lake LLC P.O. Box 6945 Incline Village, NV 89450 BW_1-72_ClaimMap_UTM27Z11.DWG October 18, 2010 Drawn By: G.I.S. Land Services Surveyed By: T&T Exploration L.L.C. Datum: 1927 Projection: UTM Zone 11 Units: Feet
--

DOC # 0216273  
Official Record  
Eureka County - NV  
Mike Rebaletti - Recorder  
Fee \$1,064.00 Page 1 of 1  
Book- Page- 0000  
0216273

T26N R49E  
T25N R48.5E T25N R49E



The SE Corner of BW 40  
bears N41°05'W and is  
955' from the SE corner  
of Section 5 T25N R49E