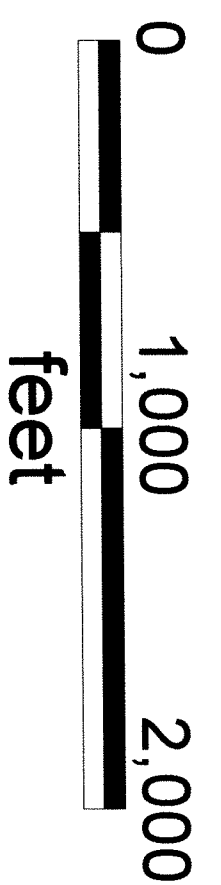


**L105 - L154 Lode Mining Claims**  
 in sec. 29, 30, 31, and 32 of  
 T28N, R53E, and sec. 5 & 6  
 of T27N, R53E.  
**Mt. Diablo Base & Meridian**  
 Larrabee Mining District  
 Elko and Eureka County, Nevada  
 1" = 500 feet  
 UTM NAD27, Zone 11  
 Renaissance Exploration, Inc.  
 940 Matley Ln., Suite 17  
 Reno, NV 89502



T28N, R53E, Sec. 30

Map of the Leonid Claim Group,  
 L105-115 in sec. 30 of T28N, R53E,  
 L116-119 in sec. 29 of T28N, R53E,  
 L107,109,111,113,115, and L120-130,  
 135-140, & 141, 143, 145, & 147  
 in sec. 31 of T28N, R53E.  
 L117, 119, 131-134, 147 & 149 in  
 Sec. 32 of T28N, R53E.  
 L136, 138, 140, 142, 144, 146, 151-152 in  
 Sec. 6 of T27N, R53E.  
 L148, 150, 153, & 154 in sec. 5 of T27N, R53E.  
 Mount Diablo Base & Meridian  
 Larrabee Mining District  
 All claims in Elko County, Nevada, except for  
 L120, 135 & 138 in both Elko and Eureka Co.,  
 and L136 entirely in Eureka Co., Nevada.  
 Located after 12 noon on the  
 1st day of September, 2010  
 by Lindsay Craig,  
 Agent for:  
 Renaissance Exploration, Inc.  
 940 Matley Ln., Suite 17  
 Reno, Nevada 89502

**Recorder's stamp:**

T28N, R53E, Sec. 29  
 T28N, R53E, Sec. 32

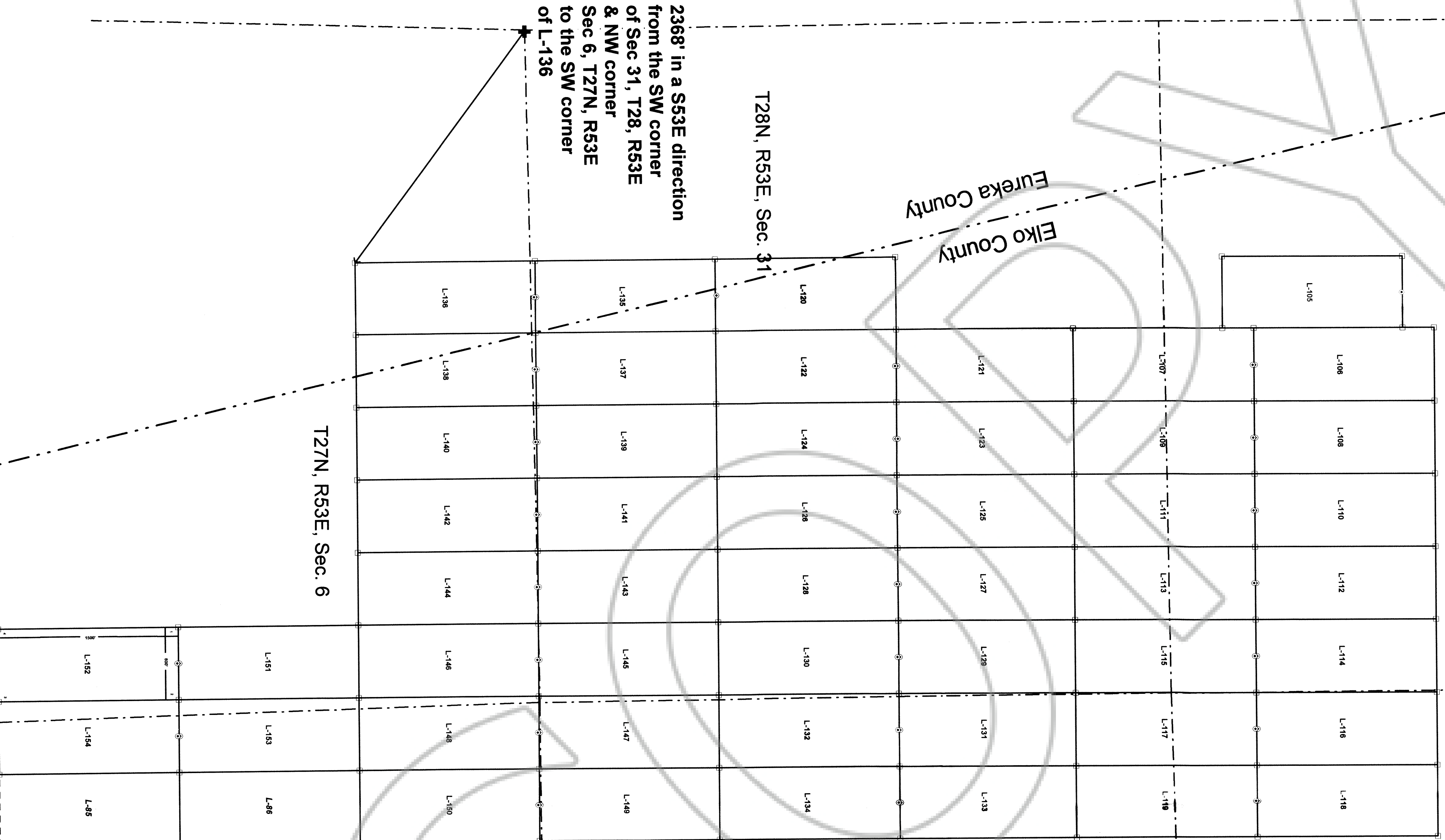
Eureka County  
 Elko County

T28N, R53E, Sec. 31

2368' in a S53E direction  
 from the SW corner  
 of Sec 31, T28, R53E  
 & NW corner  
 Sec 6, T27N, R53E  
 to the SW corner  
 of L-136

T27N, R53E, Sec. 6

T27N, R53E, Sec. 5



- Section line
- County line
- - - Pre-existing claims
- ⊕ Common corner of T27 & 28N, R53E and T27 & 28N, R52E.
- Claim corner 2" by 2" wooden post
- ⊙ Location monument 2" by 2" wooden post. Offset 5' from claim end line and 300' either side line

**DOC # 0216421**