

DOC # 0216424

11/29/2010 02:47 PM

Official Record

Recording requested By
ALMADEN AMERICA INC

Eureka County - NV

Mike Rebaleati - Recorder

Fee: \$34.00

Page 1 of

RPTT

Recorded By: FES

Book-

Page- 0000

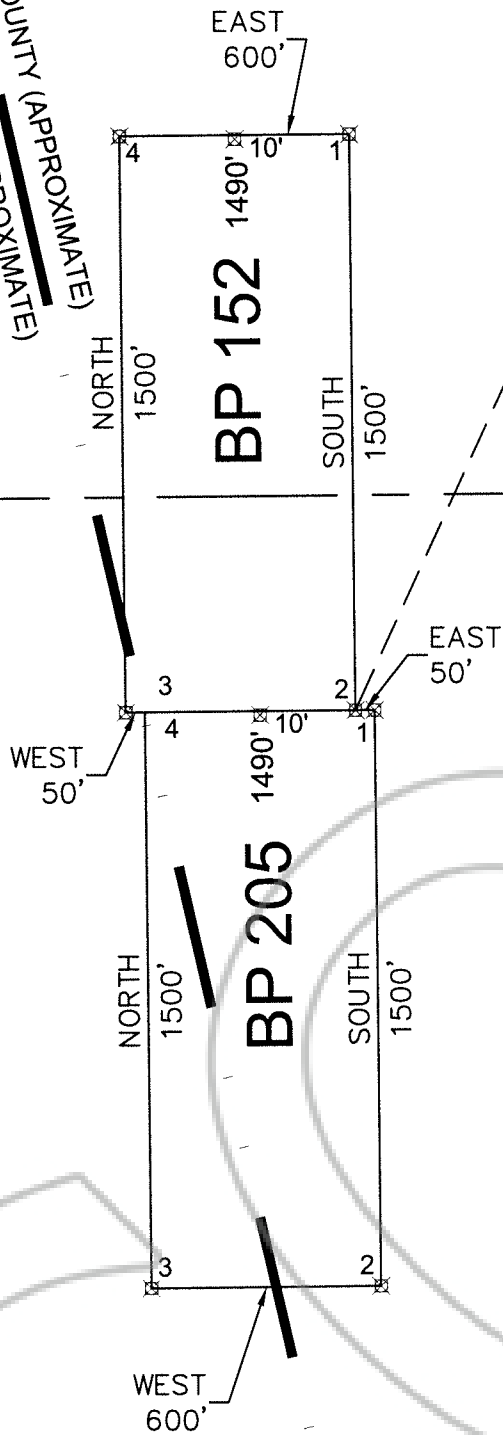


0216424

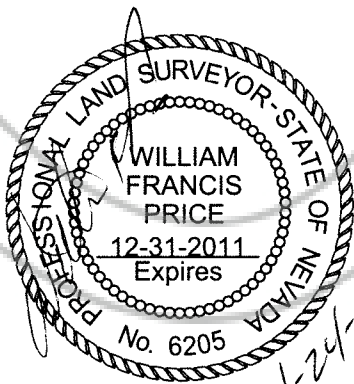
NOTES:

- 1) SECTION LINES ON THIS MAP WERE DERIVED FROM US DEPARTMENT OF INTERIOR GEOGRAPHIC COORDINATE DATA BASE, EXCEPT WHERE MONUMENTS WERE FOUND AS INDICATED.
- 2) BEARINGS ARE GEODETIC BEARINGS DETERMINED BY GPS OBSERVATIONS.
- 3) DISTANCES ARE GROUND DISTANCES.
- 4) ALL MONUMENTS ARE 2" X 2" WOODEN POSTS

EUREKA COUNTY (APPROXIMATE)
ELKO COUNTY (APPROXIMATE)



T27N R53E, S.32 33
T26N R53E S.5 4



0 250' 500'
SCALE: 1" = 500'

BP 152 and 205

Lode Mining Claims

Section 32, T27N, R53E, MDM

Almaden America Inc.

145 Ryland Street, Reno, NV 89501