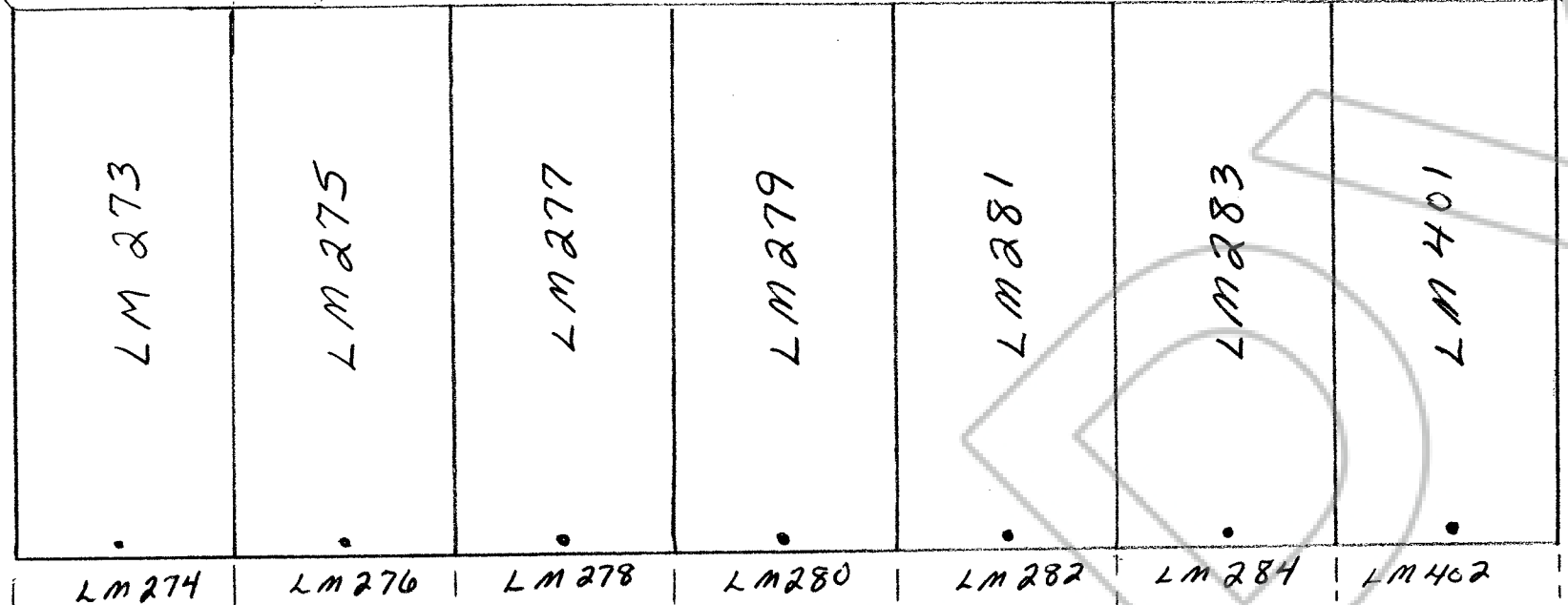
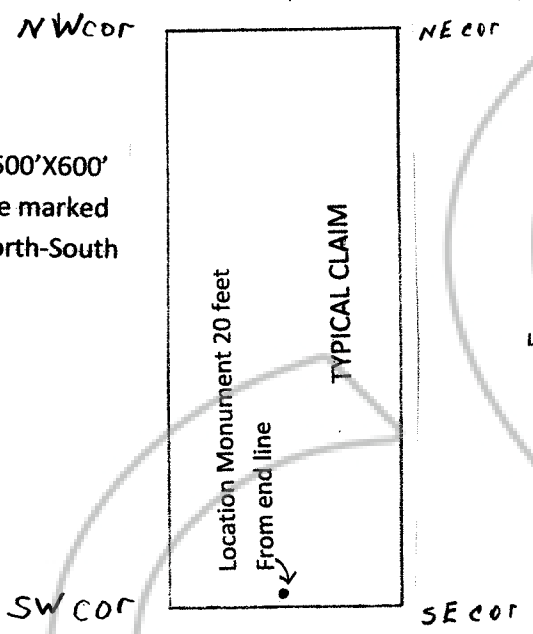


The NW cor of LM273 bears
 South 37 degrees East
 1,440 feet from the SE corner
 of S.31 T.21N. R.51E.



All claims are 1500'X600'
 unless otherwise marked
 and oriented North-South



Map of LM 273, 275, 277,
 279, 281 and 401 Lode Claims
 Eureka County Nevada
 T.20N.; R.51E.; S.7 and 8
 Located September 21, 2010

Located By
 Bravo Alaska Inc.
 4790 Caughlin Pkwy, #207
 Reno, NV 89509-0907

DOC # 0216555

12/14/2010 02:53 PM
Official Record
 Recording requested by
 BRAVO ALASKA INC

Eureka County - NV
 Mike Rebaletti - Recorder
 Fee \$109.00 Page 1 of
 RPTT Recorded By FES
 Book- Page- 0000

