

CLAIM LOCATION DATES  
 Claims 1 - 9 October 18, 2010

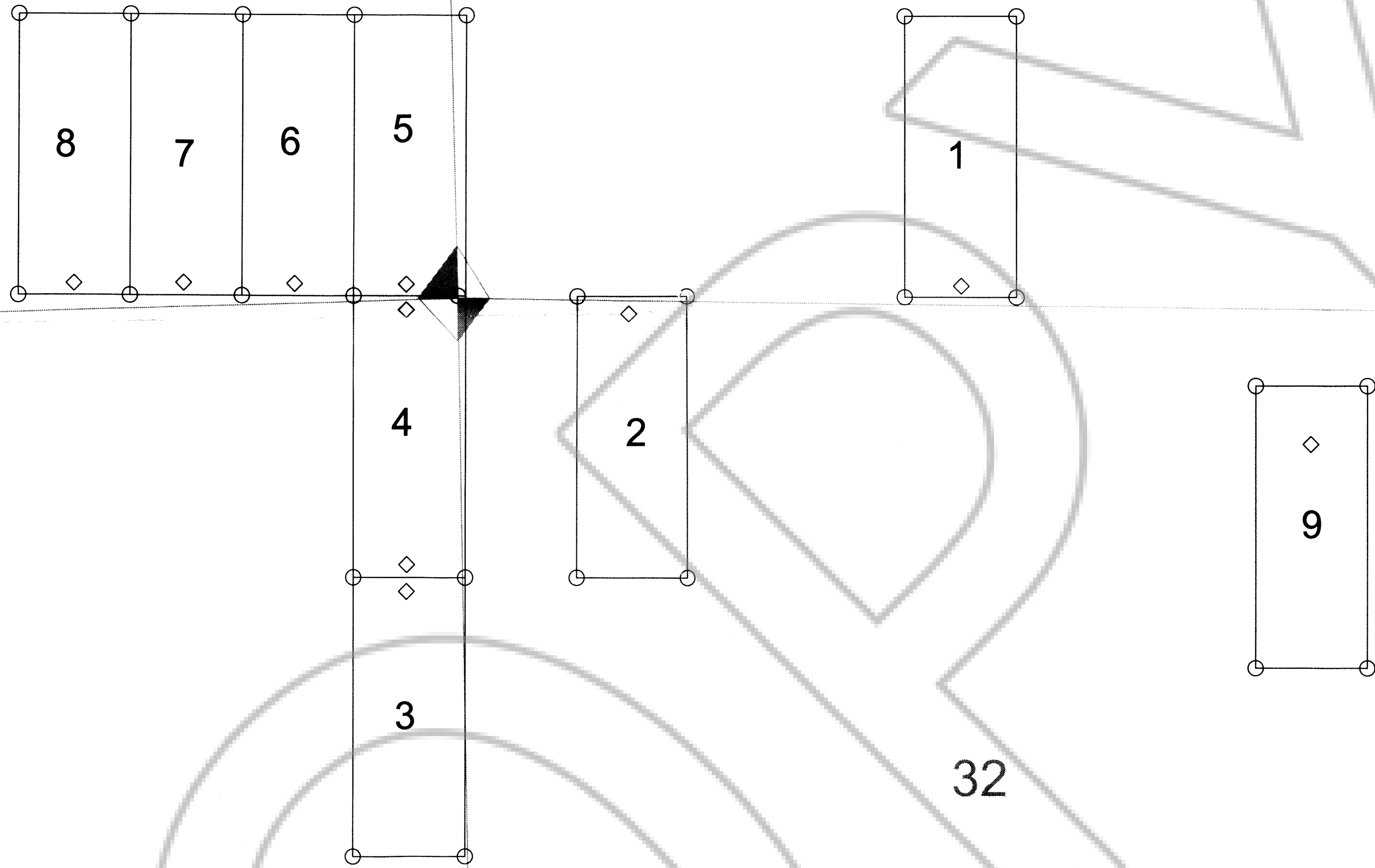
30

29

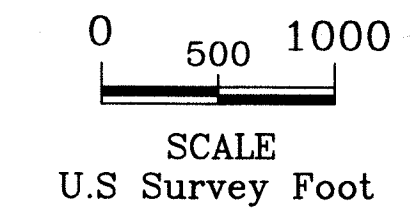
The NE corner of SW 1 is located about 1530' north and 3010' east of the Northeast corner of Section 31 T19N, R35E MDB&M.

28

R52E  
 R53E



DOC # 0216665  
 Official Record  
 Eureka County - NV  
 Mike Rebeault - Recorder  
 Fee: \$15.00  
 Book- Page- 0000



Note:  
 This Map Replaces Doc 0216657  
 Originally recorded 01/14/2011

EXPLANATION

- Claim Location Monument
- Claim Corner Monument
- Projected Section Line
- ▲ Survey Corner Monument Projected from USGS Topographic Map

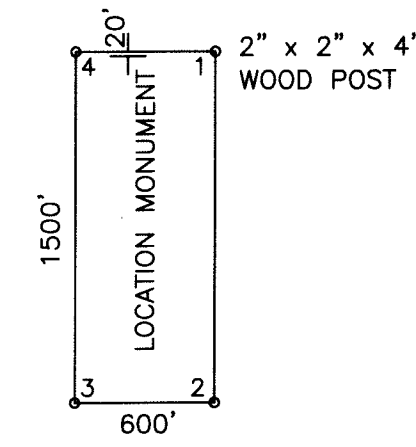
**Asset #27 SW Lode Mining Claims**

Asset #27 SW 1-9 Claim Map  
 Township 19N - Range 54, 55 E. MDBM  
 Eureka County, Nevada  
*CJT Mining Inc.*  
 P.O. BOX 491  
 West Jordan, UT 84084

Drawn By: JLI Date: January 2011

AutoCad 2010 Drawing File: 2011-Jan\_SW Claims\_NV.dwg

Survey & Map by:  
 NORTH AMERICAN EXPLORATION, INC.  
 447 North 300 West, Suite 3, Kaysville, UT 84037  
 (801) 544-3421



ALL CLAIMS ARE 1500' x 600'  
 UNLESS OTHERWISE NOTED.

TYPICAL CLAIM