

CLAIM LOCATION DATES
 Claims 13-26 January 5, 2011

T28N
 T27N

The NE corner of AP 13 is located about 3125' north and 350' west from the northeast corner of Section 15 T27N, R49E MDB&M.

9

10

13

14

12

15

16

11

17

18

19

20

21

22

23

24

25

26

R49E

13

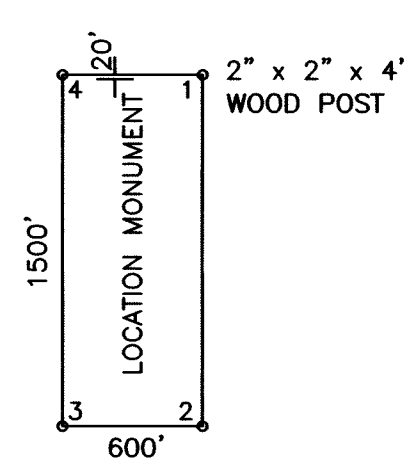
16

15

14

DOC # 0216787
 02/17/2011 02:00 PM
Official Record
 Recording requested by
 JR EXPLORATION LLC
 Eureka County - NV
 Mike Rebaletti - Recorder
 Fee: \$214.00 Page 1 of 1
 Book- Page- 0000
 0216787

0 500 1000
 SCALE
 U.S. Survey Foot



ALL CLAIMS ARE 1500' x 600'
 UNLESS OTHERWISE NOTED.

TYPICAL CLAIM

EXPLANTATION

- Claim Location Monument
- Claim Corner Monument
- Projected Section Line
- ▲ Survey Corner Monument Projected from USGS Topographic Map

AP LODE MINING CLAIMS

AP 13-26 CLAIM MAP
 T27N, R49E MDB&M
 Eureka County, Nevada

JR EXPLORATION, LLC.
 9078 South Jordan Oaks Drive
 Sandy, UT 84070

Drawn By: JLI Date: January 2011

AutoCad 2010 Drawing File: 2011-Jan_AP Claims_NV.dwg

Survey & Map by:
NORTH AMERICAN EXPLORATION, INC.
 447 North 300 West, Suite 3, Kaysville, UT 84037
 (801) 544-3421

