

CLAIM LOCATION DATES

Claims were located on Feb. 11, 2011

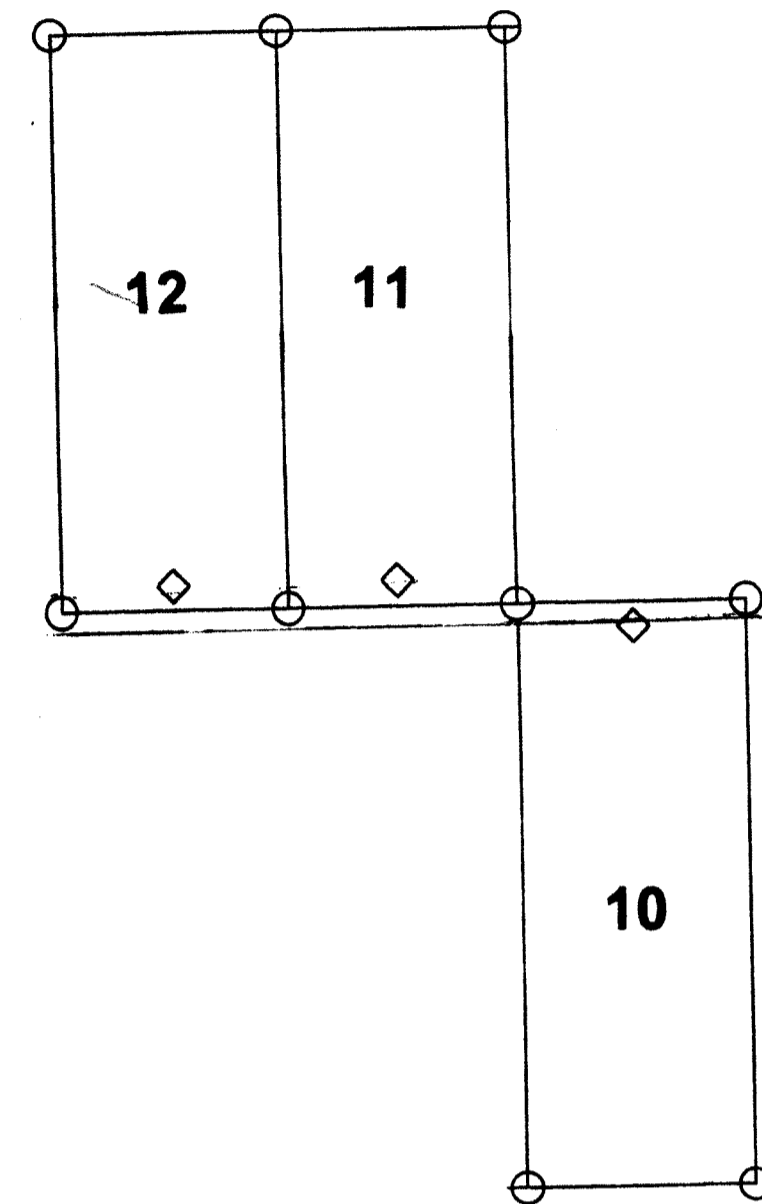
The NE Corner of 27-SW 10 is located
About 10 feet north and 2150 feet west
of the Northeast corner of Section 31,
T19N R53E. MDBM.

R52E
R53E

30

29

28



31

32

33

T19N

T18N

DOC # 0216880
Official Record
Eureka County - NV
Mike Rebaleati - Recorder
Page 1 of 1
Recorded By: FES
Book- Page- 0000
0216880

0 500 1000
SCALE
U.S. Survey Foot



EXPLANTATION

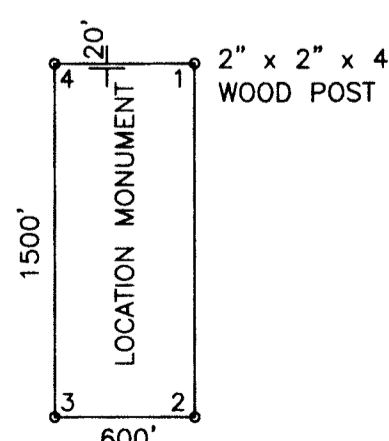
- Claim Location Monument
- Claim Corner Monument
- Projected Section Line
- Survey Corner Monument
Projected from USGS
Topographic Map

Asset #27 SW Lode Mining Claims

Asset #27 SW Claim Map
Township 9N - Range 54, 55 E. MDBM
Eureka County, Nevada
CJT Mining Inc.
P.O. BOX 491
West Jordan, UT 84084

Drawn By: JLI Date: March 2011
AutoCad 2010 Drawing File: 2011-Jan_SW Claims_NV.dwg

Survey & Map by:
NORTH AMERICAN EXPLORATION, INC.
447 North 300 West, Suite 3, Kaysville, UT 84037
(801) 544-3421



ALL CLAIMS ARE 1500' x 600'
UNLESS OTHERWISE NOTED.

TYPICAL CLAIM