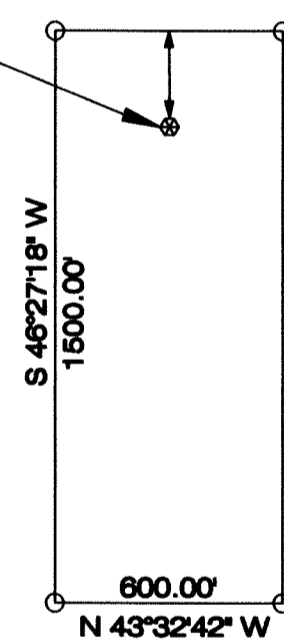


Typical Claims
unless otherwise noted

All Location Monuments are 10' from the end line, or as noted on the plat.

All corner monuments and location monuments are 4'x1-1/2'x1-1/2' wooden posts.



LEGEND

These standard symbols will be found in the drawing.

- SECTION LINE
- ⊙ SET 1-1/2'x1-1/2'x4' POST LOCATION MONUMENT
- SET 1-1/2'x1-1/2'x4' POST
- ◆ SECTION AND QUARTER CORNERS Found

CLAIM LOCATION DATES:
FEBRUARY 15, 2011: RHYOLITE 10, 11, 15 AND 16

BASIS OF BEARING AND SECTION LINE PROJECTION:
BASED ON BLM GCDB

TIE POINT
FROM EAST CORNER OF SAID CLAIM TO SE CORNER
SECTION 36, TOWNSHIP 16 NORTH, RANGE 52 EAST, MDM

RHYOLITE 10; N33°02'49"W, 5483.38'
RHYOLITE 11; N18°40'36"W, 5942.62'
RHYOLITE 15; N63°11'34"W, 5724.91'
RHYOLITE 16; N48°03'05"W, 5408.31'

CLAIM MAP OF
RHYOLITE 10, 11, 15, 16

DOC # 0217053

04/26/2011 02:12
Official Record
Recording requested by:
AMERICAN VANADIUM US, INC.
Eureka County - NV
Mike Rebaletti - Recorder
Fee: \$64.00 Page: 1 of 1
0911 Recorded By:
Book- Page- 0000



0217053

Map Of:

RHYOLITE LODE CLAIMS
Eureka County, Nevada

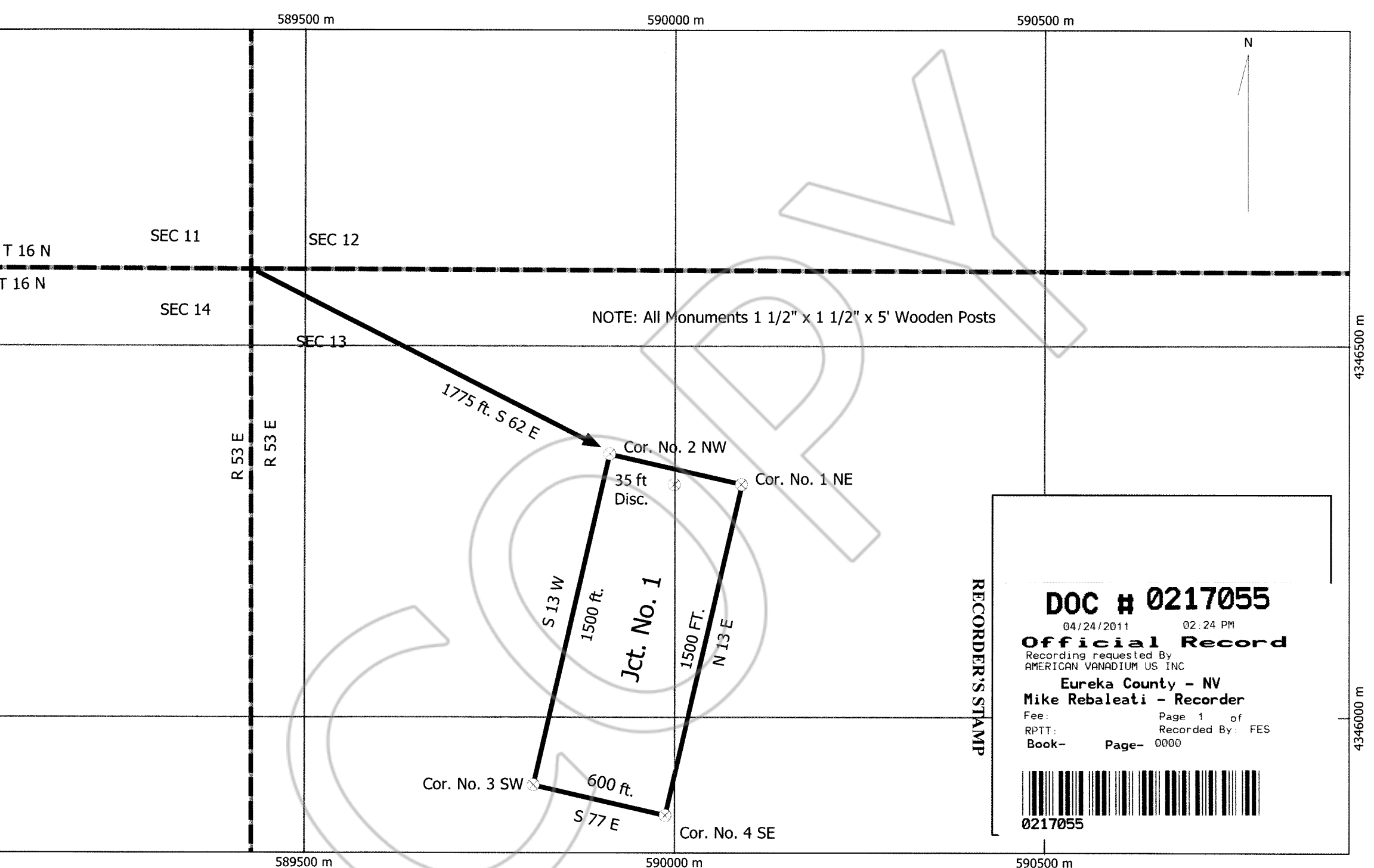
Located For:

American Vanadium US Inc.
2778 Spokane Creek Road
East Helena, Montana 59635

ASAPS

KEVIN D. HASKEW
ADVANCED SURVEYING &
PROFESSIONAL SERVICES
PO BOX 56
GOLDFIELD, NV 89013
1-775-485-9993

Claims in T 15 N, R 53 E, MDM, Sections 6, 7
and T 15 N, R 52 E, MDM, Section 12



NOTE: All Monuments 1 1/2" x 1 1/2" x 5' Wooden Posts

RECORDER'S STAMP

DOC # 0217055
 04/24/2011 02:24 PM
Official Record
 Recording requested By
 AMERICAN VANADIUM US INC
 Eureka County - NV
 Mike Rebaleati - Recorder
 Fee: Page 1 of
 RPTT: Recorded By: FES
 Book- Page- 0000

0217055

...e, Eureka County, Nev. Located March 30, 2011
 ...adium US Inc., P. O. Box 983, Eureka, NV 89316

Universal Transverse Mercator - Zone 11 (N)
 NAD 27
 SCALE: 1" = 500' (1:6,000)