

EXISTING CLAIMS

EXISTING CLAIMS

EXISTING CLAIMS

EXISTING CLAIMS

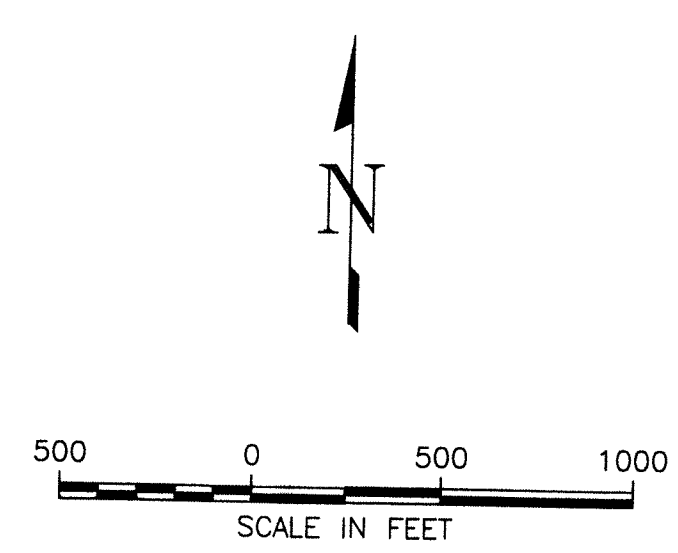
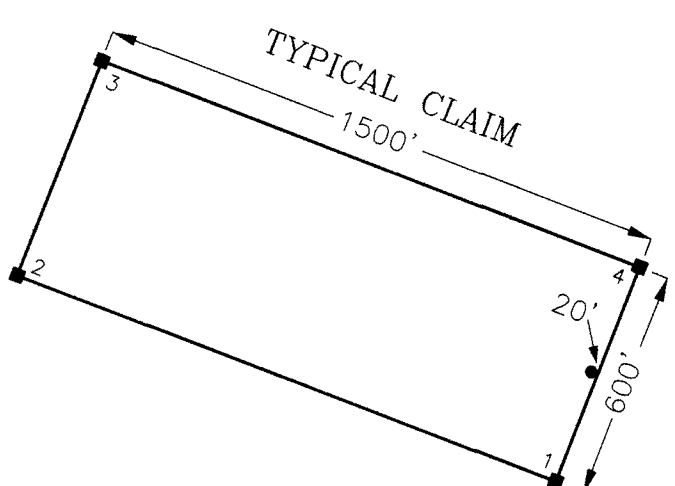
EXPLANATION

- Monuments of Location are set with 2"x2"x4" wood posts.
- Claim corners are set with 2"x2"x4" wood posts.
- All claims measure 600' x 1500'.
- Monuments of Location are set 20' into claim.

LOCATION DATES:  
BC 55-64 May 02, 2011  
BC 65-66, BC 75-81 May 03, 2011  
BC 73-74, BC 82-85 May 12, 2011

LOCATOR:  
CordeX Exploration Company  
573 E. 2nd Street  
Reno, NV 89502

TIES:  
The NE Corner (4) of BC 66 bears approximately 7171' N38°W from Comb's Peak located in Unsurveyed Sec. 21, T18N-R52E, Eureka County, Nevada  
The SE Corner (1) of BC 66 is common with the SW corner of existing BC 15 lode mining claim.  
The SE Corner (1) of BC 85 bears approximately 1776' N44°W from Comb's Peak located in Unsurveyed Sec. 21, T18N-R52E, Eureka County, Nevada  
The SW Corner (2) of BC 85 is common with the SE corner of existing BC 24 lode mining claim.



Combs Peak  
DENIO 8631

DOC # 0217446  
06/09/2011 01:49 PM  
Official Record  
Recording requested by  
CORDEX EXPLORATION CO.  
Eureka County - NV  
Mike Rebaletti - Recorder  
File #379.00 Page 1 of  
RPTT Recorded By FES  
Book- Page- 0000



CORDEX EXPLORATION CO.	
BC 55-66 and BC 73-85	
Lode Mining Claims	
Unsurveyed Secs. 7-9, 16-18 and 20, T18N-R52E, M.D.B.&M. Eureka County, Nevada	
Drawn By: J.A.T. Drawing: BC55-etol.dwg View: Layout: 500sc	Date: June 6, 2011 Revised: