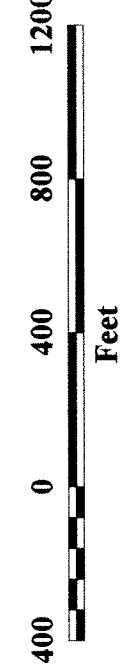
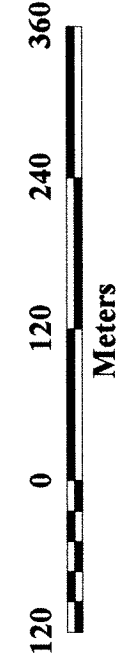
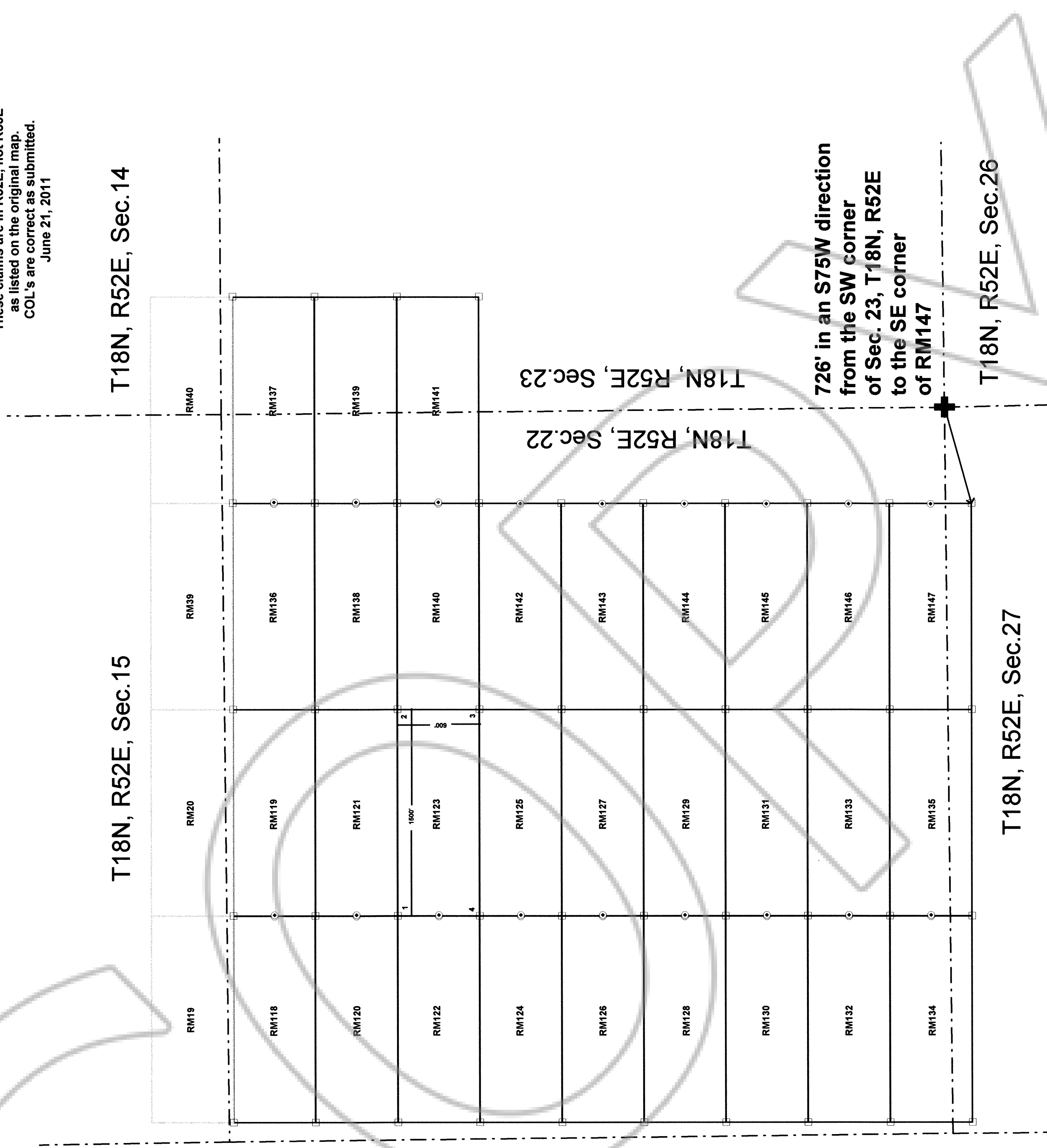


RM51 through RM-195
Lode Mining Claims
in Sec. 1-3, 10-14, and
22, 23, and 27 of T18N, R52E
Mt. Diablo Base & Meridian
Fish Creek Mining District
Eureka County, Nevada
Map 3 of 3
1" = 500 feet
UTM NAD27, Zone 11
Renaissance Exploration, Inc.
940 Matley Ln., Suite 17
Reno, NV 89502

Recorder's stamp:



Amended Map 3 for Eureka County Recorder
 Document #217382 (claim map) for
 the Rose Mine claim group RM51-RM195
 Amended map corrects the
 Range error noted on the original Map 3
 These claims are in R52E, not R53E
 as listed on the original map.
 COL's are correct as submitted.
 June 21, 2011



Map 3 of 3 the Rose Mine Claim Group,
 Eureka County, T18N, R52E
 RM118-147 in Sec. 22,
 RM137, 139, and 141 in Sec. 23,
 and RM134, 135, and 147 in Sec. 27.
 Mount Diablo Base & Meridian
 Fish Creek Mining District
 All claims in Eureka County, Nevada.
 RM51-60, RM94-117, RM148-167
 located on March 4, 2011
 RM61-93, RM118-147, RM 168-181
 located on March 5, 2011
 by Brian Goss,
 Agent for:
 Renaissance Exploration, Inc.
 940 Matley Ln., Suite 17
 Reno, Nevada 89502

- Claim outline
- Section line
- Pre-existing/adjacent claims
- Common eastern corners of Sec. 12 and 13 of T18N, R52E.
- Claim corner 2" by 2" wooden post
- Location monument 2" by 2" wooden post. Offset 5' from claim end line and 300' either side line