

TIE POINT DATA:
 THE NORTHEAST CORNER OF FSW 76 LIES APPROXIMATELY
 328 FEET EAST AND 2,822 FEET SOUTH OF THE NORTHWEST CORNER
 OF PROJECTED SECTION 34, T.26N., R.52E., M.D.B.M.

33

34

35

FSW 68	••	FSW 76									
FSW 69	••	FSW 77	FSW 33								
FSW 70	••	FSW 78	FSW 35								
FSW 71	••	FSW 79	FSW 37								
FSW 72	••	FSW 80	FSW 56								
FSW 73	••	FSW 81	FSW 58	FSW 59	FSW 62	FSW 63	FSW 66	FSW 67			
FSW 74	••	FSW 82	FSW 84	••	FSW 86	FSW 88	••	FSW 90	FSW 92	••	FSW 94
FSW 75	••	FSW 83	FSW 85	••	FSW 87	FSW 89	••	FSW 91	FSW 93	••	FSW 95

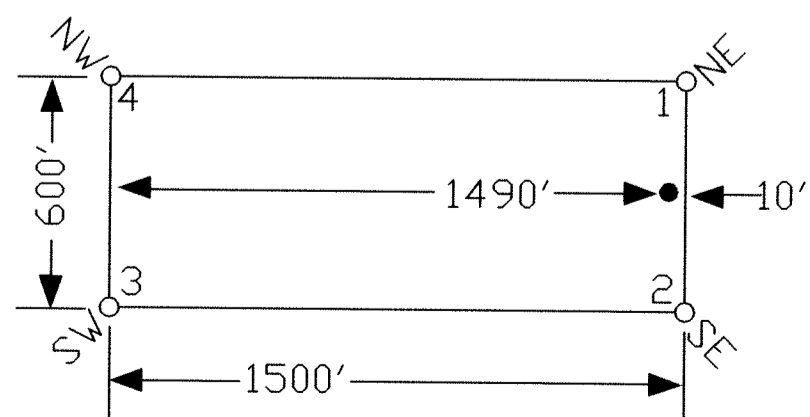
T.26N.
T.25N.

4

3

2

TYPICAL CLAIMS



NOTES:
 LOCATION MONUMENTS SET 10' FROM CLAIM END
 CENTERLINES. ALL LOCATION MONUMENTS AND CLAIM
 POSTS ARE 2"x2"x4' WOODEN STAKES.

DASHED SECTION LINES INDICATE PROJECTED SECTIONS.

DOC # 0217705

06/24/2011 03:06 PM
Official Record
 Recording requested by
 GOLDEN GRYPHON USA, INC.
 Eureka County - NV
 Mike Rebaleati - Recorder
 Fee \$424.00 Page 1 of 1
 Book- Page- 0000

LOCATION DATES:
 April 26, 2011 - FSW 68-95



(28 Total Claims)



Locator:
 Golden Gryphon USA Inc.
 1400 Tanager place RR21, Roberts Creek, BC V0N 2W1
 FSW 68-95 Lode Claims
 T.25,26N.,R52E; Eureka County, Nevada

369 - 5th STREET
 PH: (775) 778-0668 ELKO, NV 89801 FAX: (775) 778-0687

DATE: June 2011
 ACAD FILE NAME: client\gryphon\fsw68-95.dwg
 PLOT SCALE: 1"=500'
 DRAWN BY: js