

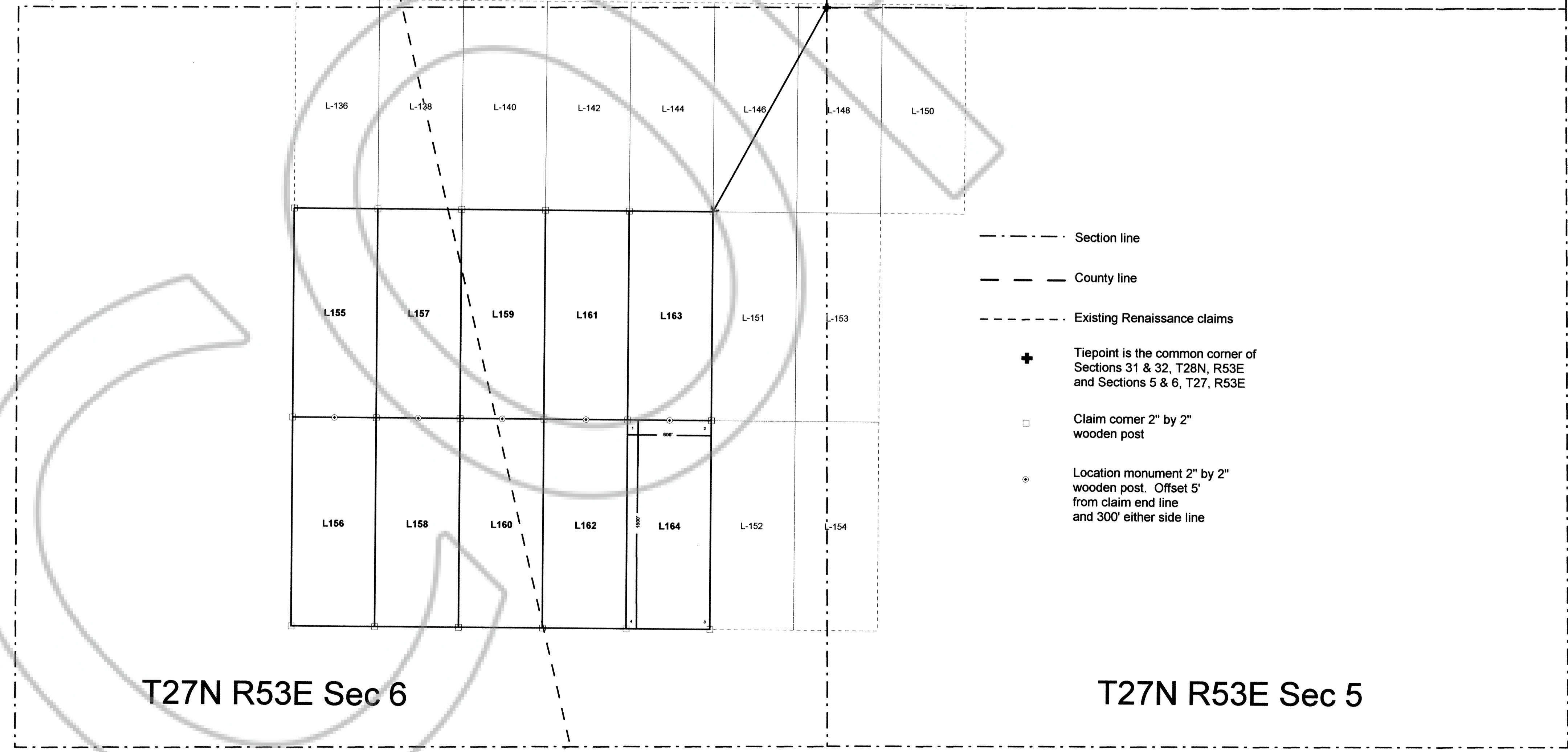
L155 - L164 Lode Mining Claims
Section 6, T27N, R53E
Mt. Diablo Base & Meridian
Larrabee Mining District
Elko and Eureka Counties, Nevada
 1" = 500 feet
 UTM NAD27, Zone 11
 Renaissance Exploration, Inc.
 4750 Longley Lane, Suite 106
 Reno, NV 89502

Recorder's stamp:

Map of the Leonid Claim Group,
 L155-164 in section 6, T27N, R53E
 Mount Diablo Base & Meridian
 Larrabee Mining District
 Claims L155, L156 & L158 in Eureka County, Nevada
 Claims L157, L159, L160 & L162
 in both Elko and Eureka County, Nevada
 Claims L161, L163 & L164 in Elko County, Nevada
 Claims located on the
 3rd day of May, 2011
 by Lindsay Craig,
 Agent for:
 Renaissance Exploration, Inc.
 4750 Longley Ln., Suite 106
 Reno, Nevada 89502

T28N R53E Sec 31 T28N R53E Sec 32

The NE corner of claim L163 is approximately
 1679' in a S29W direction from the corner
 monument located at the common corner of
 Section 31 & 32, T28N, R53E and
 Section 5 & 6, T27N, R53E.



T27N R53E Sec 6

T27N R53E Sec 5