

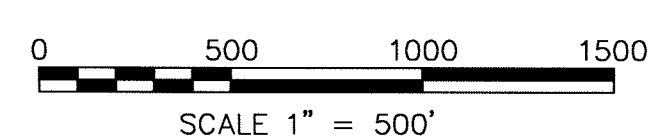
- LEGEND
- Location Monument
1.5" x 1.5" x 4' long wood post with vial/notice aluminum tag at 10 ft. distance from endline unless otherwise noted.
 - Claim Corner
1.5" x 1.5" x 4' long wood post with scribed aluminum tag attached
 - WC set Witness Corner set
 - ◆ SECTION CORNER AS NOTED
 - UNSURVEYED Approved Govt. Surveys do not exist for all or part of Section boundaries.

- LOCATION DATES
- 5/9/11 = BTO 44-53, 96-103
 - 5/10/11 = BTO 12-23, 90-95
 - 5/11/11 = BTO 11, 33, 35-43, 70-89
 - 5/12/11 = BTO 24-31, 54-65, 104-113, 128-131
 - 5/13/11 = BTO 66-69, 122-127, 148-155
 - 5/14/11 = BTO 2-8, 32, 34, 114-121, 132-137
 - 5/15/11 = BTO 1, 9, 10, 138-143
 - 5/16/11 = BTO 144-147, 172-179, 196-203, 221, 242-244
 - 5/17/11 = BTO 180-185, 188-195
 - 5/18/11 = BTO 205, 207, 209, 211, 213, 222-226
 - 5/20/11 = BTO 214-219
 - 5/21/11 = BTO 204, 208, 208, 245-247
 - 5/23/11 = BTO 210, 212, 220, 227, 248-254
 - 5/24/11 = BTO 228-231, 255-261
 - 5/25/11 = BTO 186, 232-241
 - 5/26/11 = BTO 158-165
 - 5/27/11 = BTO 156, 157, 168-171, 187

CORNER POSTING WAS COMPLETED BY JUNE 10, 2011

LOCATOR: BARRICK GOLD U.S. INC.

ADDRESS:
136 E. SOUTH TEMPLE, SUITE 1800
SALT LAKE CITY, UT 84111

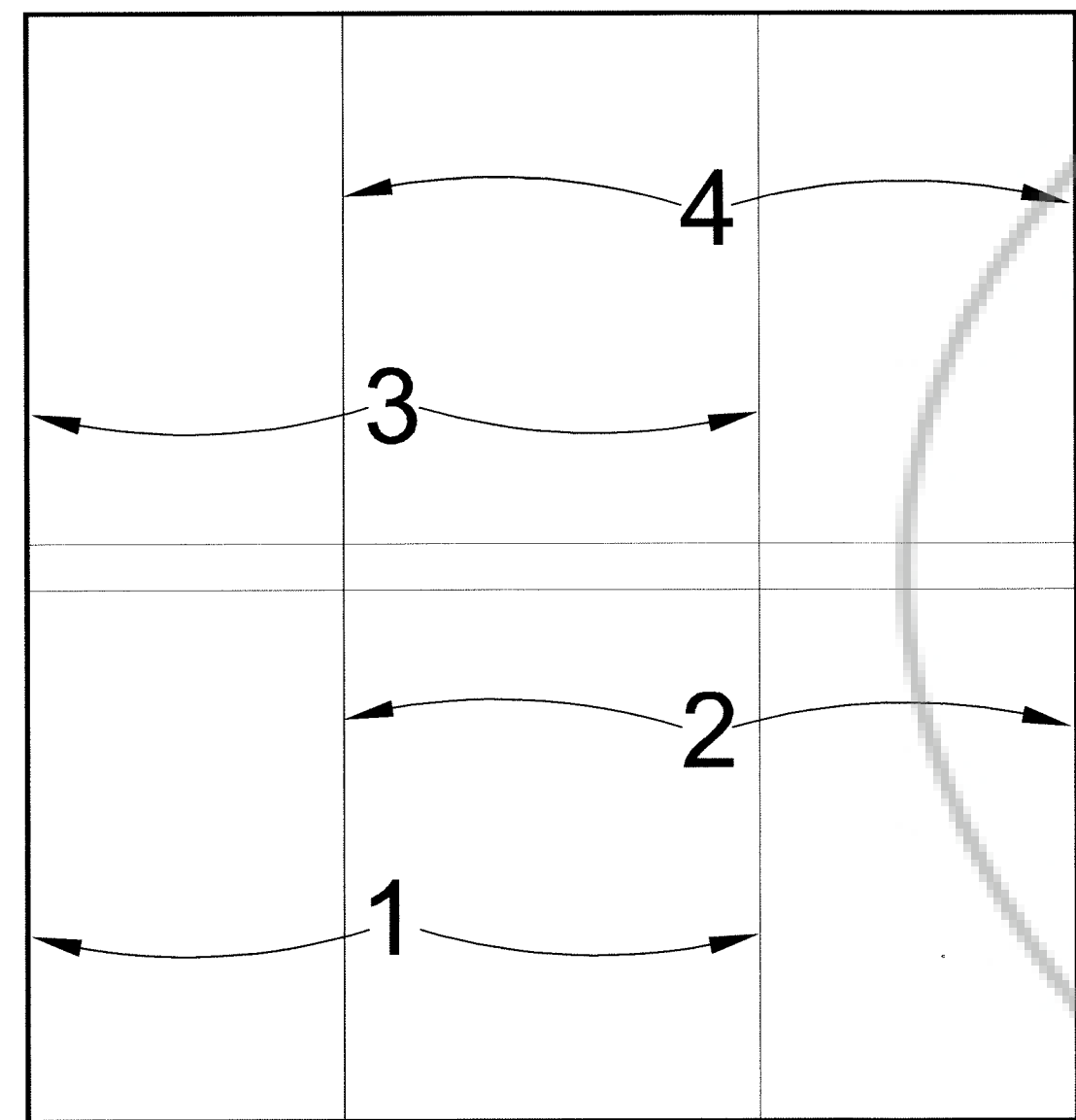


MAP OF LODE CLAIMS
BTO 1 THROUGH 261

WITHIN

SECTIONS 1-4, 9-15, 23, 24, T26N, R48E,
SECTIONS 18-19, T26N, R49E,
SECTIONS 33-36, T27N, R48E,
MDM, EUREKA COUNTY, NEVADA
BARRICK GOLD U.S. INC.

DOC # 0218112
07/27/2011 01:38 PM
Official Record
Recorded & Indexed By:
BARRICK GOLD U.S. INC.
Eureka County - NV
Mike Rebaletti - Recorder
Fee \$3,919.00 Page 1 of 1
BPT1 Recorded By: FES
Book- Page- 0000



INDEX TO MAP SHEETS

SEE SHEET 3

UNSURVEYED 9

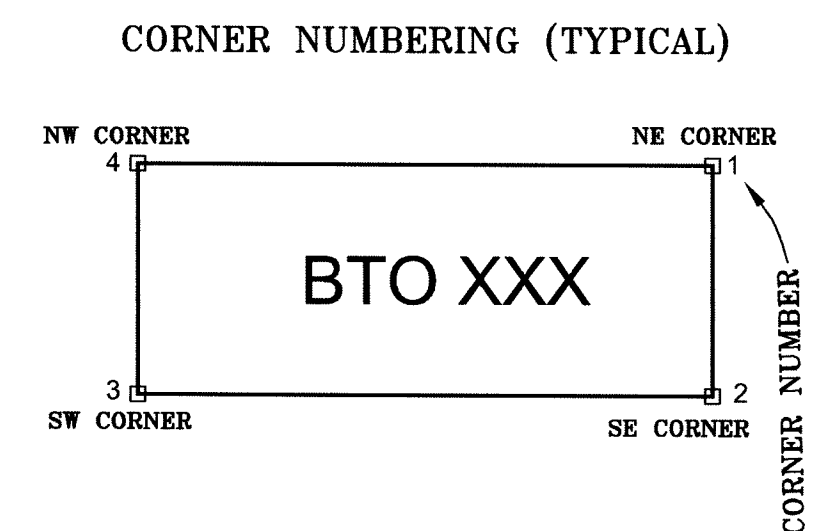
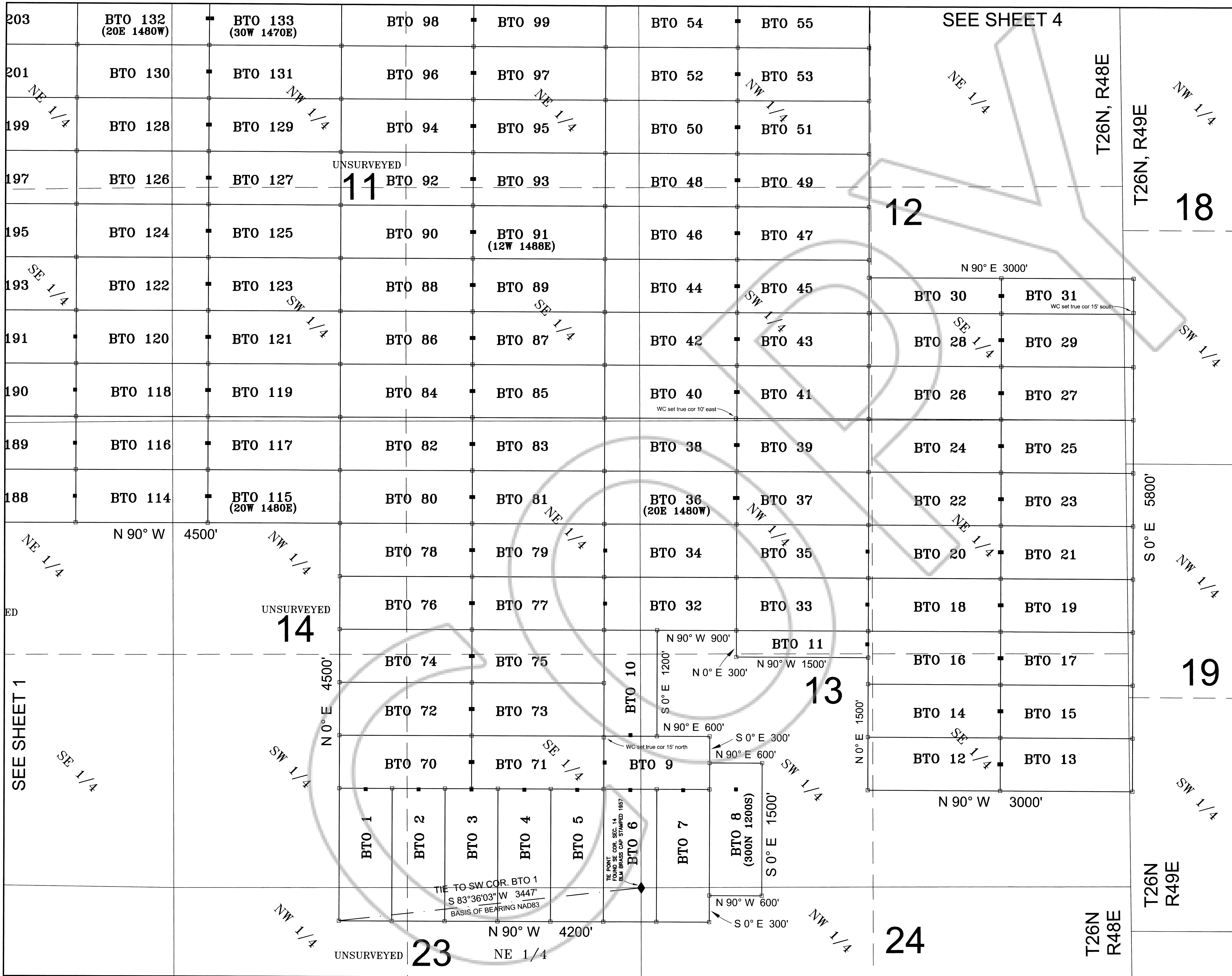
UNSURVEYED 16

UNSURVEYED 15

UNSURVEYED 14

UNSURVEYED 23

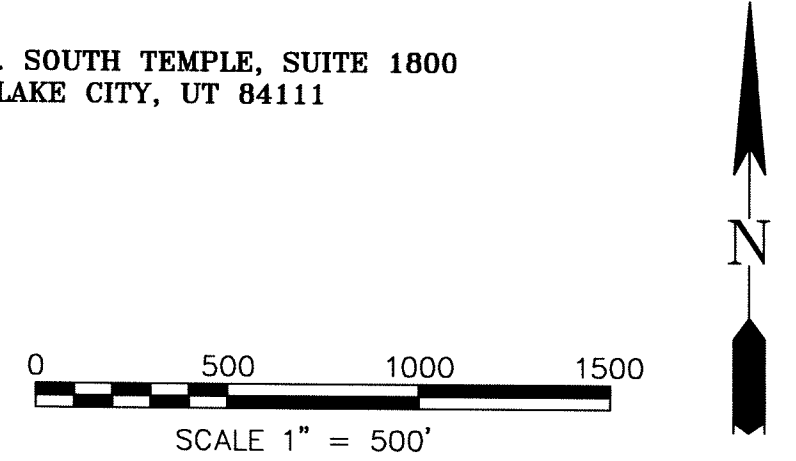
SEE SHEET 2



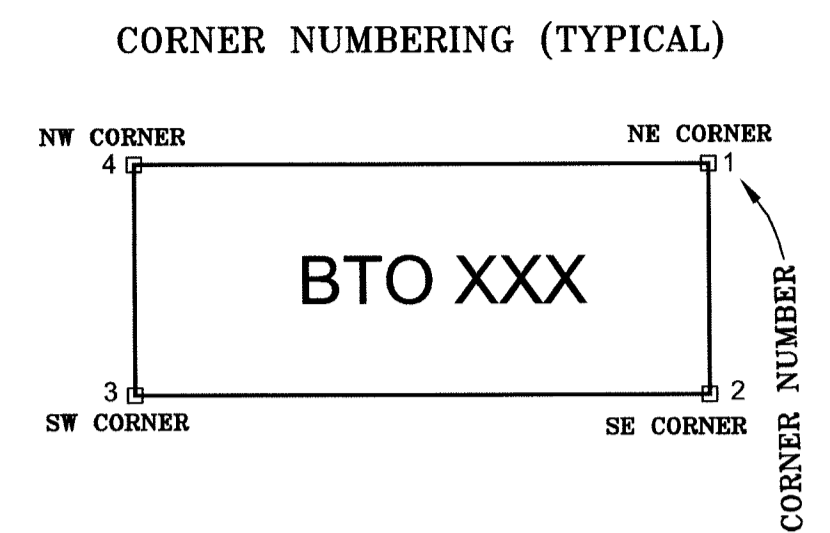
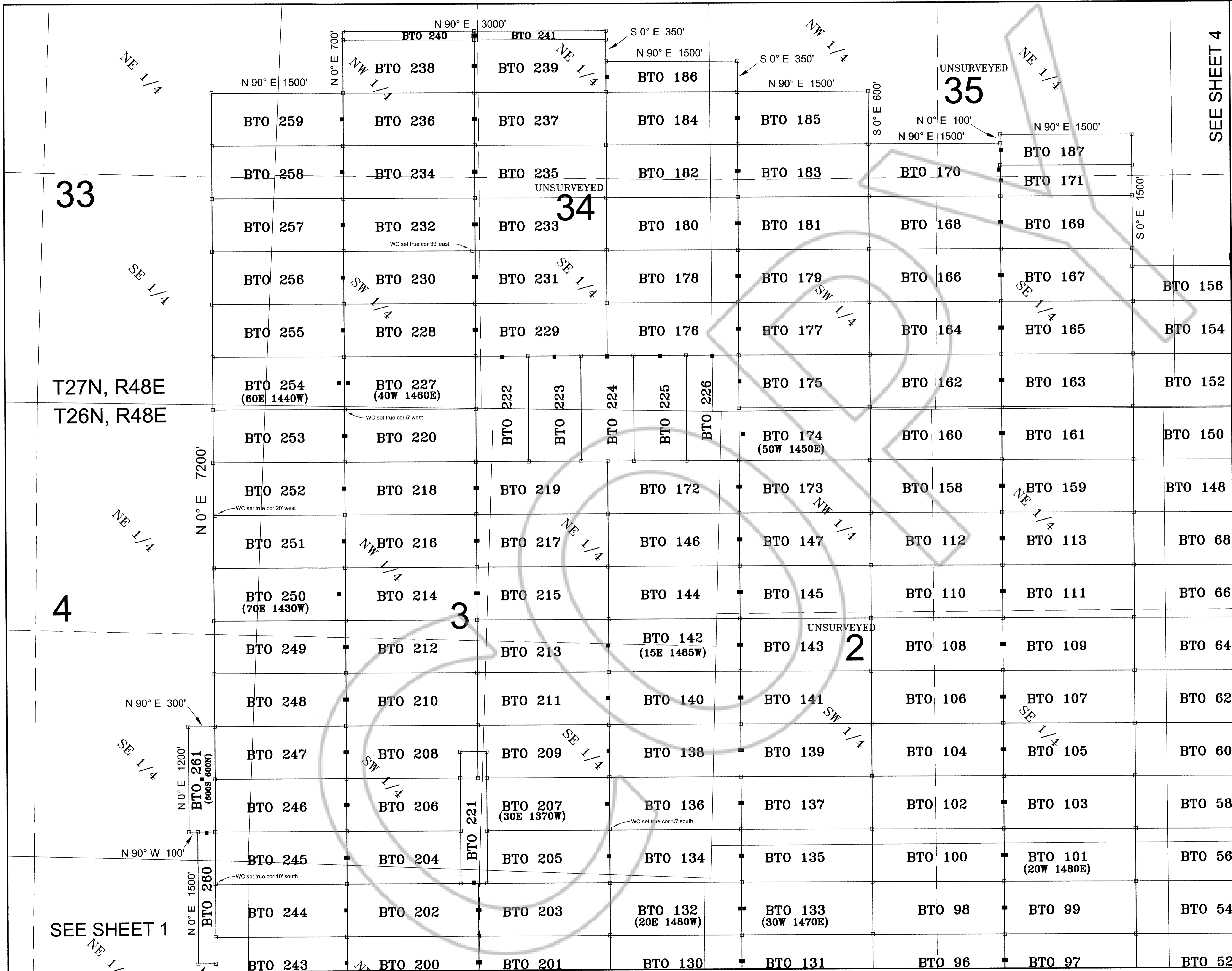
- LEGEND**
- Location Monument
1.5" x 1.5" x 4' long wood post with vial/notice aluminum tag at 10 ft. distance from endline unless otherwise noted.
 - Claim Corner
1.5" x 1.5" x 4' long wood post with scribed aluminum tag attached
 - WC set Witness Corner set
 - ◆ SECTION CORNER AS NOTED
- UNSURVEYED Approved Govt. Surveys do not exist for all or part of Section boundaries.

DOC # 0218112
 Official Record
 Recording requested by:
 BARRICK GOLD U.S. INC.
 Eureka County - NV
 Mike Rebaletti - Recorder
 Fee: \$3,919.00 Page 3 of 4
 9/17/2011 Recorded By: FES
 Book- Page- 0000

LOCATOR: BARRICK GOLD U.S. INC.
 ADDRESS:
 136 E. SOUTH TEMPLE, SUITE 1800
 SALT LAKE CITY, UT 84111



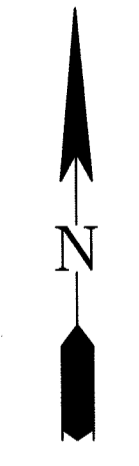
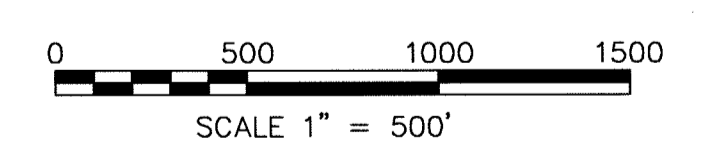
MAP OF LODE CLAIMS
 BTO 1 THROUGH 261
 WITHIN
 SECTIONS 1-4, 9-15, 23, 24, T26N, R48E,
 SECTIONS 18-19, T26N, R49E,
 SECTIONS 33-36, T27N, R48E,
 MDM, EUREKA COUNTY, NEVADA
 BARRICK GOLD U.S. INC.



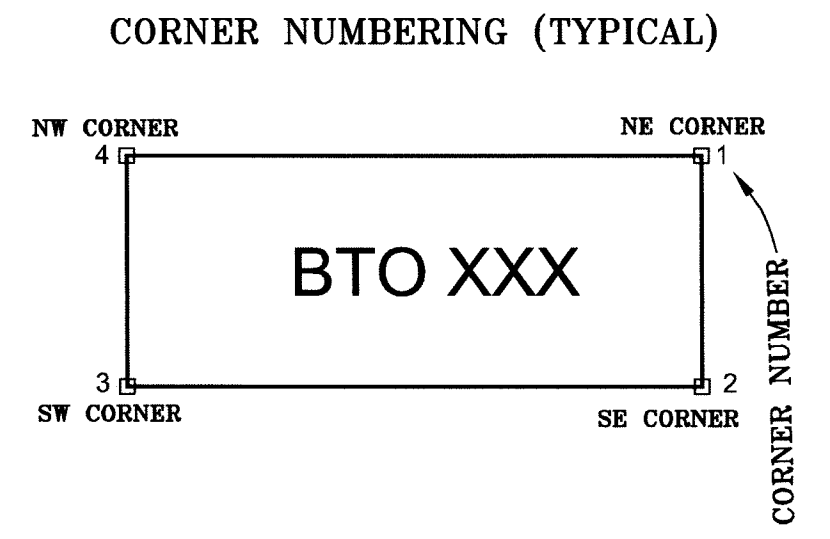
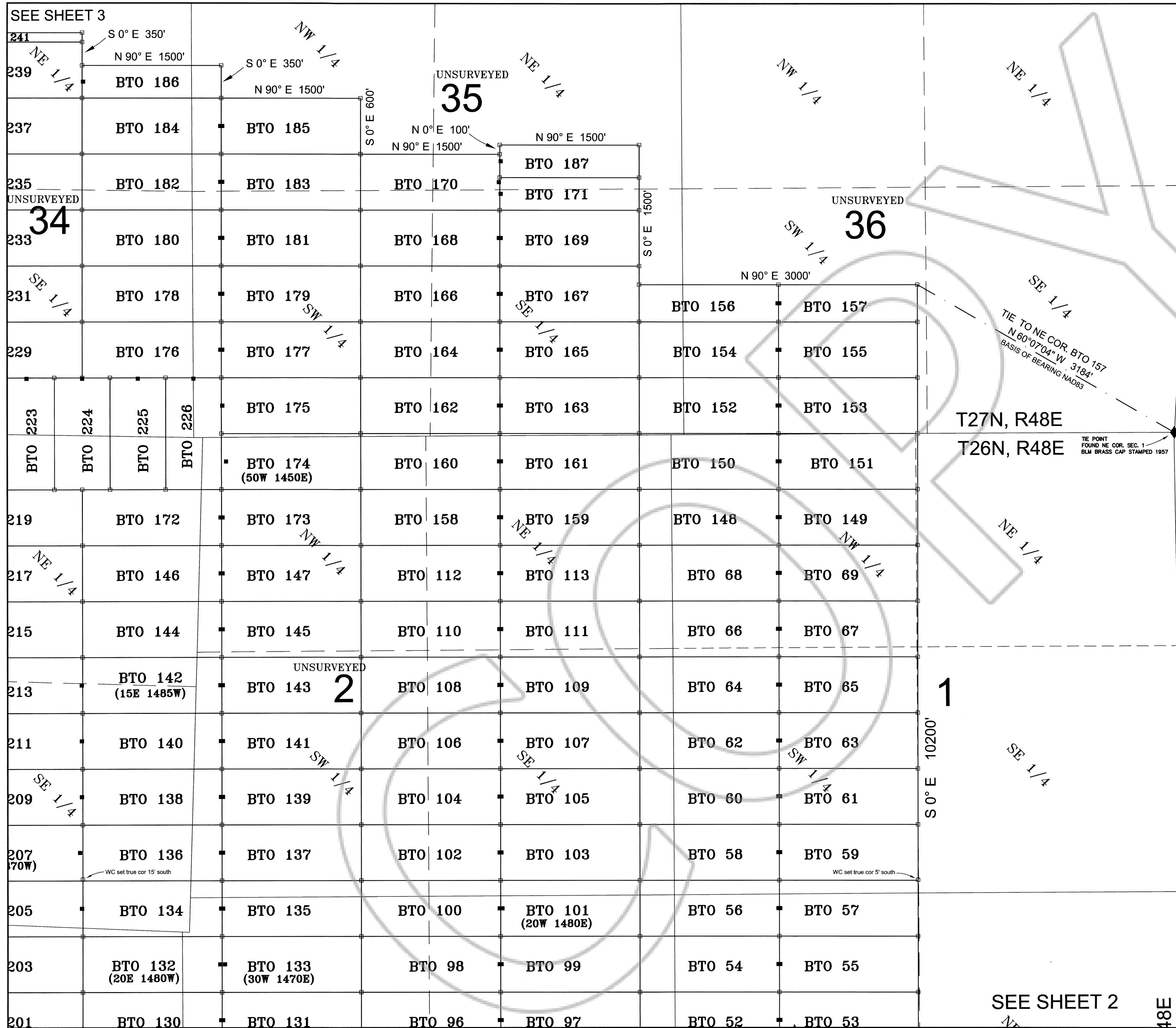
- LEGEND
- Location Monument
1.5"x 1.5"x 4' long wood post with vial/notice aluminum tag at 10 ft. distance from endline unless otherwise noted.
 - Claim Corner
1.5"x 1.5"x 4' long wood post with scribed aluminum tag attached
 - WC set Witness Corner set
 - ◆ SECTION CORNER AS NOTED
 - UNSURVEYED Approved Govt. Surveys do not exist for all or part of Section boundaries.

DOC # 0218112
 01/27/2011
 Official Record
 Recording Requested By
 BARRICK GOLD U.S. INC.
 Eureka County - NV
 Mike Rebaleati - Recorder
 Fee: \$3,919.00 Page 3 of 7
 2011 Book- Page- 0000
 0218112

LOCATOR: BARRICK GOLD U.S. INC.
 ADDRESS:
 136 E. SOUTH TEMPLE, SUITE 1800
 SALT LAKE CITY, UT 84111



MAP OF LODE CLAIMS
 BTO 1 THROUGH 261
 WITHIN
 SECTIONS 1-4, 9-15, 23, 24, T26N, R48E,
 SECTIONS 18-19, T26N, R49E,
 SECTIONS 33-36, T27N, R48E,
 MDM, EUREKA COUNTY, NEVADA
 BARRICK GOLD U.S. INC.



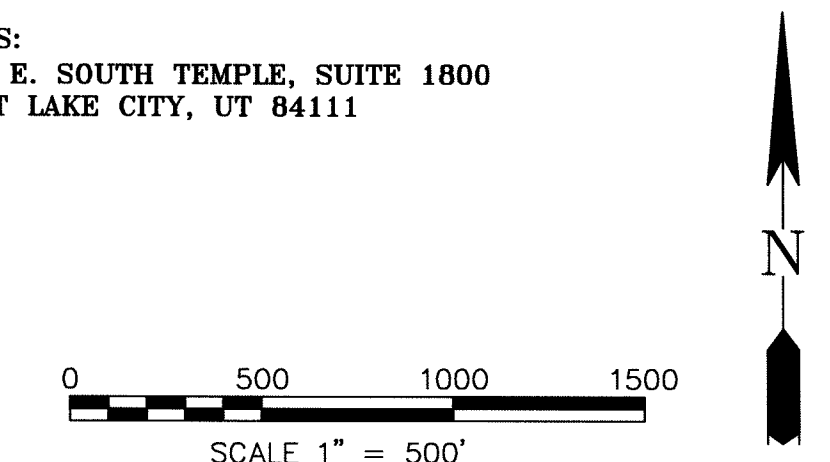
- LEGEND
- Location Monument
1.5" x 1.5" x 4' long wood post with vial/notice aluminum tag at 10 ft. distance from endline unless otherwise noted.
 - Claim Corner
1.5" x 1.5" x 4' long wood post with scribed aluminum tag attached
 - WC set Witness Corner set
 - ◆ SECTION CORNER AS NOTED
 - UNSURVEYED Approved Govt. Surveys do not exist for all or part of Section boundaries.

DOC # 0218112

07/27/2011 01:38 PM
Official Record
 Recording requested by
 BARRICK GOLD U.S. INC.
 Eureka County - NV
 Mike Rebalati - Recorder
 Fee \$3,919.00 Page 4 of 4
 RPTT- Recorded By: FES
 Book- Page- 0000



LOCATOR: BARRICK GOLD U.S. INC.
 ADDRESS:
 136 E. SOUTH TEMPLE, SUITE 1800
 SALT LAKE CITY, UT 84111



MAP OF LODE CLAIMS
 BTO 1 THROUGH 261
 WITHIN
 SECTIONS 1-4, 9-15, 23, 24, T26N, R48E,
 SECTIONS 18-19, T26N, R49E,
 SECTIONS 33-36, T27N, R48E,
 MDM, EUREKA COUNTY, NEVADA
 BARRICK GOLD U.S. INC.