

14

13

19

300'	BH 117	BH 118	BH 119	BH 120	BH 121	BH 122	BH 123	BH 124	BH 125	BH 126	BH 127	BH 128	BH 129	BH 130	BH 131	BH 132	BH 133	BH 134	BH 136	BH 137	BH 140	BH 142	BH 141	BH 143	BH 144	BH 146	BH 145	BH 147	500'
300'		BH 91	BH 92	BH 93	BH 94	BH 95	BH 96	BH 97	BH 98	BH 99	BH 100	BH 101	BH 102	BH 103	BH 104	BH 106	BH 107	BH 108	BH 109	BH 110	BH 111	BH 112	BH 113	BH 114	BH 116				750'

23

24

25

26

The SE Corner of BH 88 bears N76°09'W and is 15,616' from the NE corner of Section 4 T26N R49E

26

25

31

T27N R48E
T26N R48E

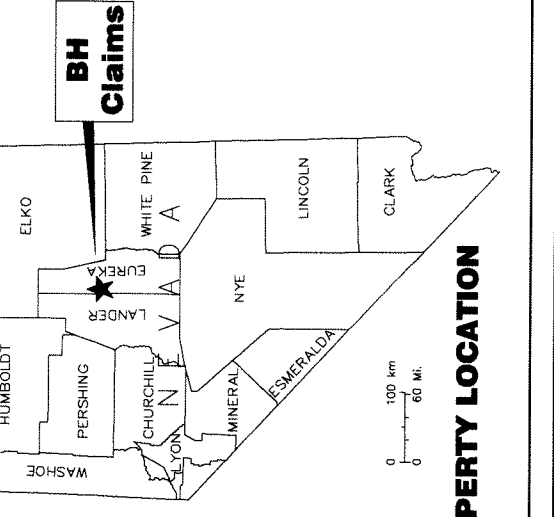
T27N R49E
T26N R49E

DOC # 0218285
08/02/2011 08:13 AM
Official Record
Eureka County - NV
Nikolas Seal
Recorder
#111 5489 08
Recorded By / FES
Book - 0000
Page - 0000



0218285

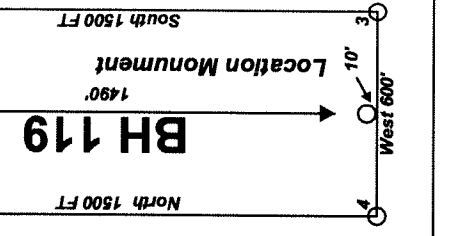
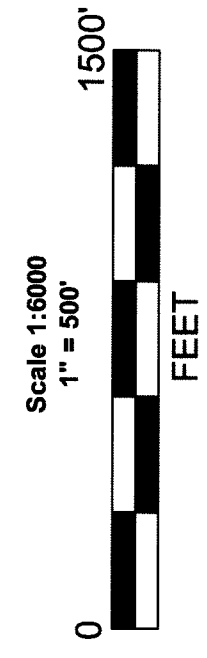
"BH" lode claims 91-114, 116 were located on May 24, 2011 and "BH" lode claims 117-147 were located on May 25, 2011 and "BH" lode claims 86-88 were located on June 7, 2011 in Sections 13, 14, 23-26 Township 27 North Range 48 East and in Sections 19, 30, 31 Township 27 North Range 48 East in Eureka County, Nevada



Locator:
Carlin Gold US Inc.
One East Liberty St. Suite, #424
Reno, NV. 89501

Location Map for BH 86-88, 91-114, 116-147 Lode Claims Sheet 1 of 1

Notes:
Location Monuments are set 10' from claim end lines unless noted otherwise.
All location and corner monuments are 2" X 2" X 4" wooden posts with scribed metal tags. All claims are 600' by 1500' unless noted otherwise.



Location Map for
BH 86-88, 91-114, 116-147 Lode Claims
Carlin Gold US Inc.
One East Liberty St. Suite, #424
Reno, NV 89501
BH 86-148, Claims, N27Z11F1.dwg
June 24, 2011
Drawn By: G.I.S. Land Services
Surveyed By: T&T Exploration LLC.
Datum: 1927 Projection: UTM Zone 11
Units: Feet