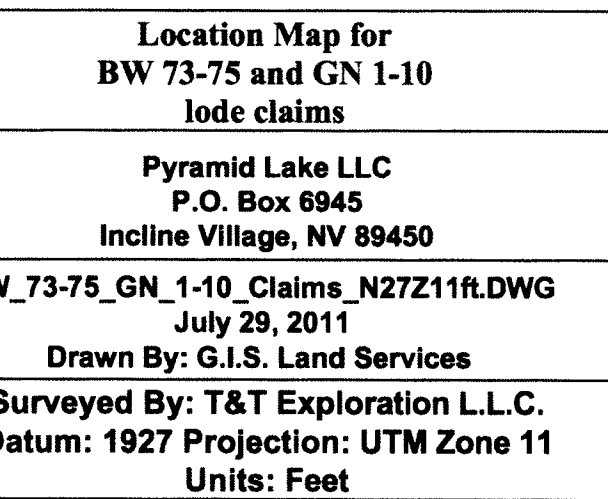


WN" lode claims 73-75 and "GN" lode claims 1-10 were located on May 23, 2011 in Township 25 North Range 48 East, Sections 12 & 13 and in Township 25 North Range 48 1/2 East, Sections 13 & 24, and in Township 25 North Range 49 East, Section 13, all in Eureka County, Nevada.


The diagram illustrates a typical GN 1 claim. It is a rectangular area with the following specifications:

- Top Boundary:** East 1500 FT
- Bottom Boundary:** West 1500 FT
- Left Boundary:** North 600'
- Right Boundary:** South 600'
- Internal Dimensions:**
 - Horizontal distance between vertical lines: 1490'
 - Vertical distance between horizontal lines: 10'
- Center Label:** GN 1
- Location:** Location Monument
- Title:** Typical Claim

PROPERTY LOCATION



DOC # 0218357
08/05/2011 03:05 PM
Official Record
Recording requested by
PROVIDO LAW, LLC
Eureka County - NV
Mike Rebaleati - Recorder
Fee \$199.00 Page 1 of
RPT. Recorded By FES
Book-- Page-- 0000



0218357