

023

024

019

026

025

030

035

036

031

T24N R50E

T24N R51E

T23 1/2N R50E

T23N R51E

001

006

005

Approximately 697' bearing N 54 E
from SW corner of MAZ 10
to SE corner of Section 23, T 24 N R 50 E

Claims previously filed
shown in gray

Unsurveyed Section and Township
lines shown with dashed pattern

Approximately 1860' bearing S 50 E
from SW corner of MAZ 85
to SE corner of Section 36, T 24 N R 50 E

DOC # 0218365
08/08/2011 09:02 AM
Official Record
Recording requested by
Miranda U.S.A., Inc.
Eureka County - NV
Mike Rebaletti - Recorder
Fee - \$34.00 Page 1 of 1
RPT. Recorded By: FES
Book - Page - 0000



CLAIM MAP MAZ Claims

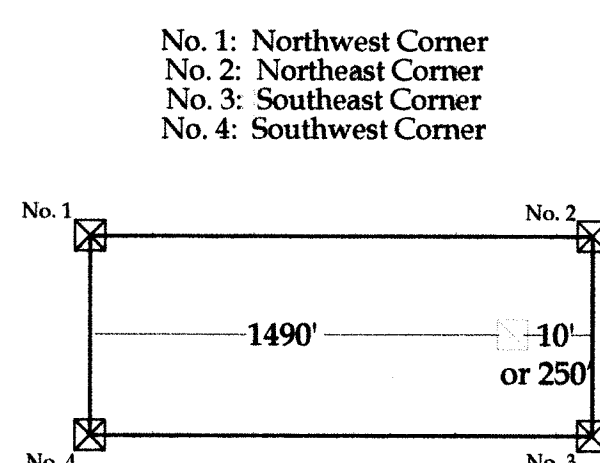
Explanation

- ☒ Claim corner post 2X2 wood post w/ metal tag
- ☒ Location Notice post 2X2 wood post w/ metal tag, and location notice

All claims are 1500' x 600'

Discovery Monuments for MAZ 1-82 and 86-87 are located at 10' off the end of the line
Discovery Monuments for MAZ 83-85 are located at 250' off the end of the line

No. 1: Northwest Corner
No. 2: Northeast Corner
No. 3: Southeast Corner
No. 4: Southwest Corner

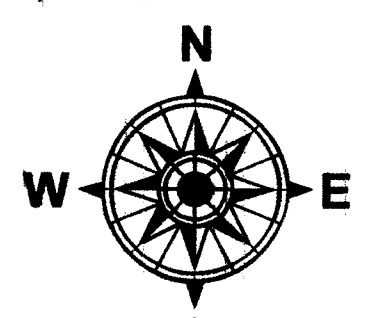


Miranda U.S.A., Inc. Claim Map MAZ Claims Nos. 61-63 and 83-85

MAZ 61-63 located on June 11th, 2011
MAZ 83-85 located on June 9th, 2011

Located in Section 36,
Township 24 North, Range 50 East M.D.M.,
and Section 31,
Township 24 North, Range 51 East M.D.M.,
Eureka County, Nevada

Located By:
Miranda U.S.A., Inc.
310 Silver Street
Elko, Nevada 89801



500 0 1,000
Feet