

EXPLANATION

- Monuments of location are set with 2"x2"x4' wood posts.
- Claim Corners are set with 2"x2"x4' wood posts.
- All claims measure 600' x 1500' with the exception of SWS 170 and SWS 176 which measure 300' x 1500'.
- Monuments of location are set 20' into claim.

LOCATION DATES:

SWS 127-142 June 14, 2011  
SWS 145-158, 161-166, 171-174 June 14, 2011  
SWS 144, 159, 160, 167, 169, 170, 175-178 July 23, 2011  
SWS 179-181 June 15, 2011

LOCATOR:

Slevens Gold LLC  
c/o Woodburn and Wedge  
6100 Neil Road, Suite 500  
Reno, NV 89511-1159

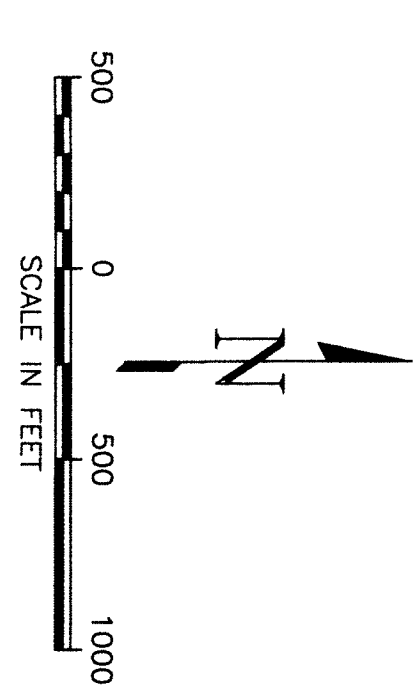
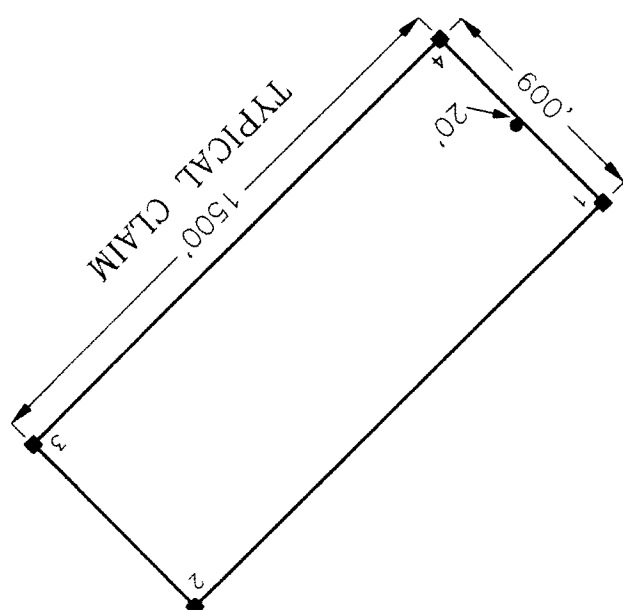
TIES:

The SW Corner (1) of SWS 178 bears approximately 6844' NS8W from the SW Corner of Section 6, T18N-R53E, Eureka County, Nevada.

The NE Corner (1) of SWS 171 is common with the SE corner of existing SWS 111 unpatented lode mining claim.

The SE Corner (2) of SWS 179 bears approximately 21,039' N63W from the SW Corner of Section 6, T18N-R53E, Eureka County, Nevada.

The NE Corner (3) of SWS 179 is common with the NE corner of existing SWS 123 unpatented lode mining claim.



**SWS 127-142, 144-167**  
**SWS 169-181**  
**Lode Mining Claims**

Projected Secs. 27, 28, 33-36, T19N-R52E and  
Projected Secs. 1-3, T18N-R52E, M.D.B.A.M.  
Eureka County, Nevada

Drawn By: Cordex Staff  
Drawing: 257-SWS17&18-Claims.dwg  
Layout: 500ac

Date: August 23, 2011  
Revised:

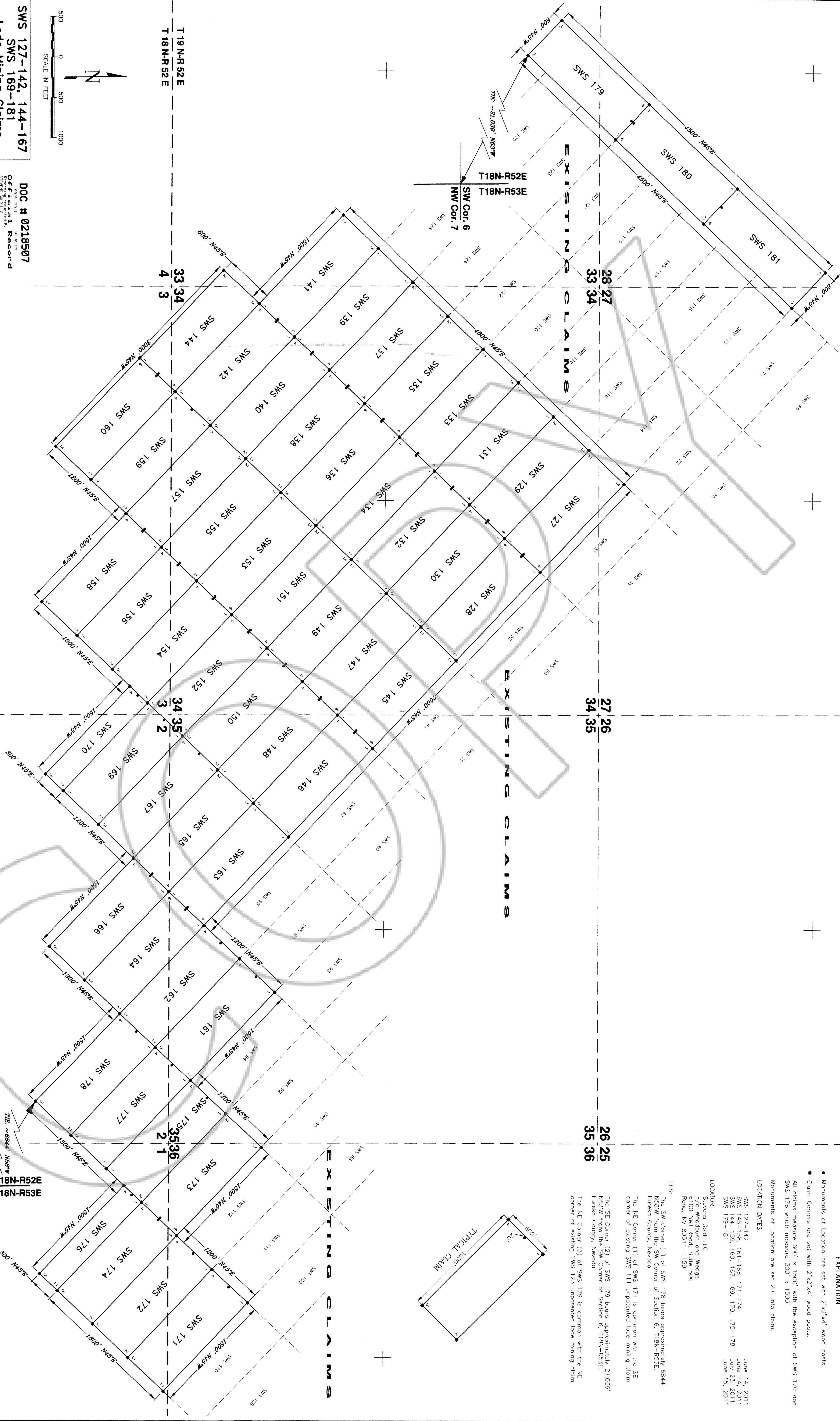
**DOC # 0218507**  
**Official Record**  
08/01/2011 02:45 PM  
STEVENS GOLD LLC d/b/a By  
Mike Robbletelli - Recorder  
Eureka County - NV  
Book- 3793 00  
Page- 0000  
Recorded By: FES



**EXISTING CLAIMS**

**EXISTING CLAIMS**

**EXISTING CLAIMS**



**EXISTING CLAIMS**