

12

13

7

8

18

17

24

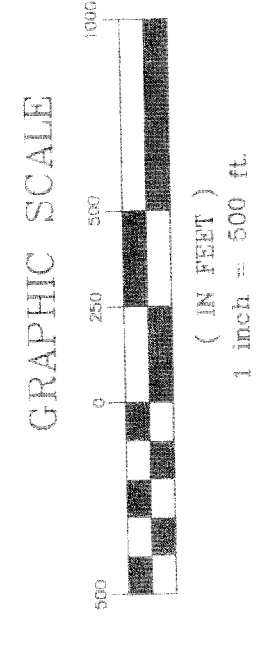
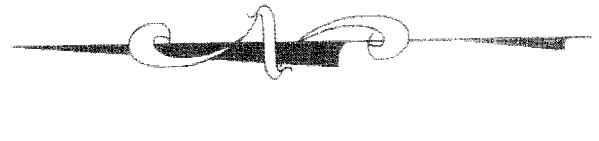
19

DESCRIPTION

MAP OF: AB 5-7, 16-18, 28 & 29 ANGELO BELLI MINING CLAIMS, EUREKA COUNTY, NEVADA

NARRATIVE

SECTION LINES SHOWN ON THIS MAP WERE DERIVED FROM THE UNITED STATES DEPARTMENT OF INTERIOR GEOLOGICAL SURVEY QUADRANGLE: COMBS PEAK 1980. BLM PROTRACTION (RECORD TYPE "RECT") DATED DECEMBER 14, 1962 WAS ALSO USED.



- LEGEND**
- SPECIFICS MINING MONUMENT SET 10' FROM END-CENTERS OF CLAIM. (UNLESS OTHERWISE NOTED ON PLAT)
 - ▲ BLM (RECORD) SECTIONAL MONUMENT (UNLESS OTHERWISE NOTED ON PLAT)
 - SECTION LINE
 - TOWNSHIP OR RANGE LINE

NOTES:

ALL CLAIMS ARE 600' X 1500'. WITH ALL LOCATION MONUMENTS OFFSET 10' FROM END-CENTERS (MID-POINT) AS SHOWN ON SHEETS 2-3.

SOUTHWEST CORNER OF AB 29 IS WEST 31' FEET AND NORTH 690' FEET FROM THE SOUTHWEST CORNER OF SECTION 18, TOWNSHIP 18 NORTH, RANGE 52 EAST, MOUNT DIABLO BASE AND MERIDIAN, NEVADA. THE LOCATION OF THIS MONUMENT IS DOCUMENTED ON THE AFOREMENTIONED BLM PROTRACTION PLAT FOR SAID TOWNSHIP OF AND RANGE, DATED DECEMBER 14, 1962.

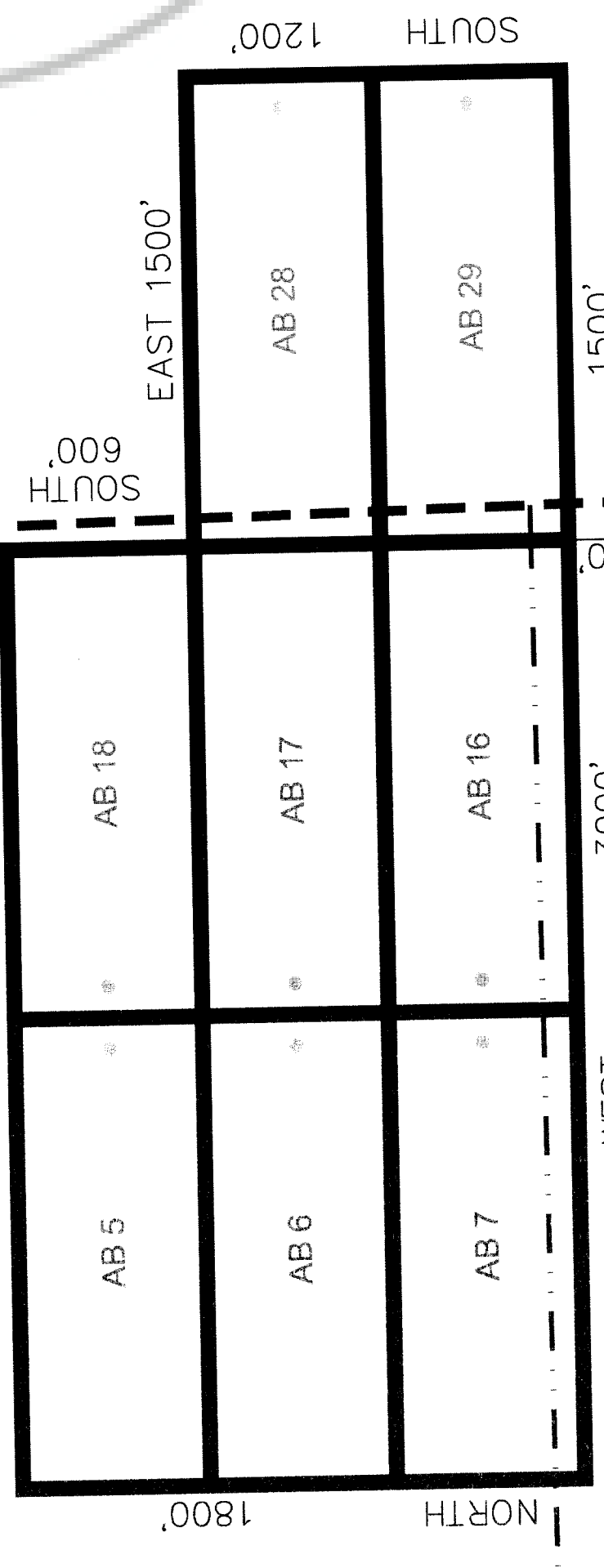
LOCATOR: RENVIC ERICKSON FOR SILVER INTERNATIONAL INC.

**ANGELO BELLI
RECORD OF MINING CLAIMS**

LOCATED IN
SECTIONS 13 & 24 TOWNSHIP 18 NORTH, RANGE 51 EAST,
SECTIONS 17-20 TOWNSHIP 18 NORTH, RANGE 52 EAST,
MOUNT DIABLO BASE AND MERIDIAN NEVADA

PREPARED FOR:
SILVER INTERNATIONAL INC.
545 SOUTH VALLEY VIEW DR.
ST. GEORGE, UT 84770

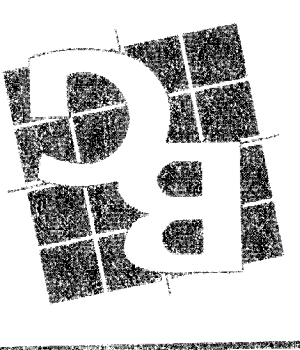
SEC 20



T18N R51E
T18N R52E

RECORD OF MINING CLAIMS
TOWNSHIPS 18 NORTH, RANGE 51-52 EAST
MOUNT DIABLO BASE AND MERIDIAN

BUSH & GUDGELL, INC.
Engineers - Planners - Surveyors
205 East Tabernacle Suite #4
St. George, Utah 84770
Phone (435) 673-2337 / Fax (435) 673-3161
www.bushandgudgell.com



DATE: 08/22/2013
DRAWN: SRS
APPROVED:
SCALE: 1" = 500'
JOB NO.: 18193

DOC # 0218524

Official Record
Recorded in Eureka County - NV
Mike Rebeleal - Recorder
Book- 0000 Page- 0000



0218524