

UNSURVEYED  
 NE 1/4  
 25  
 T27N, R48E  
 T27N, R49E

UNSURVEYED  
 31

UNSURVEYED  
 32

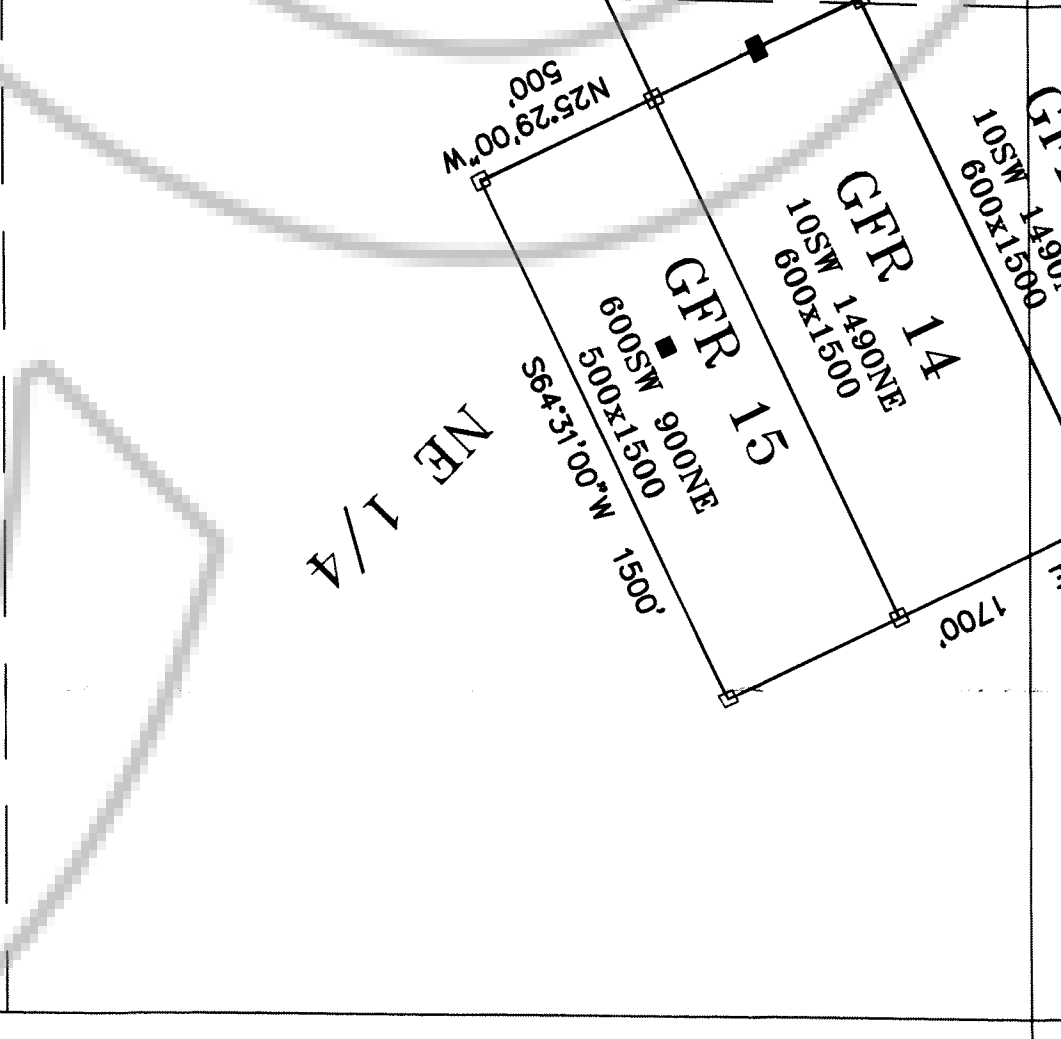
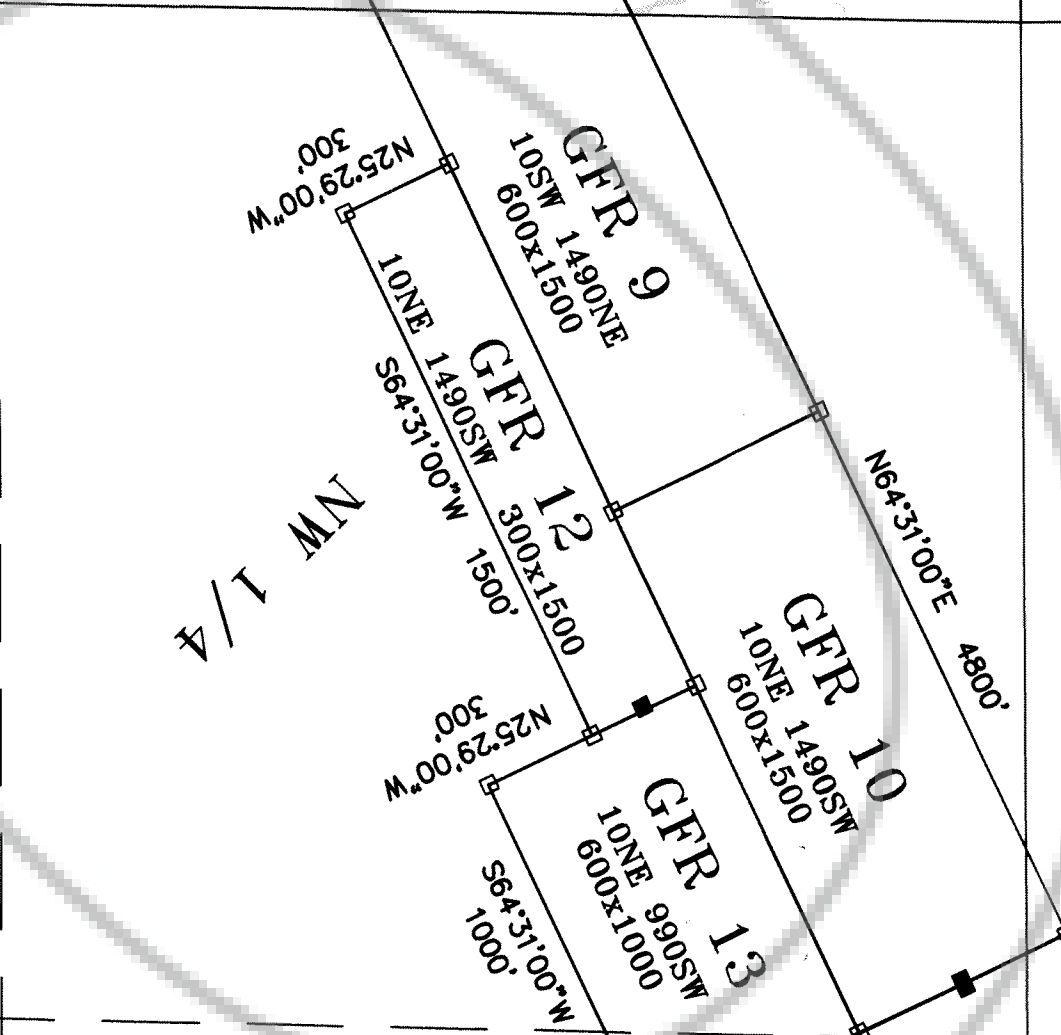
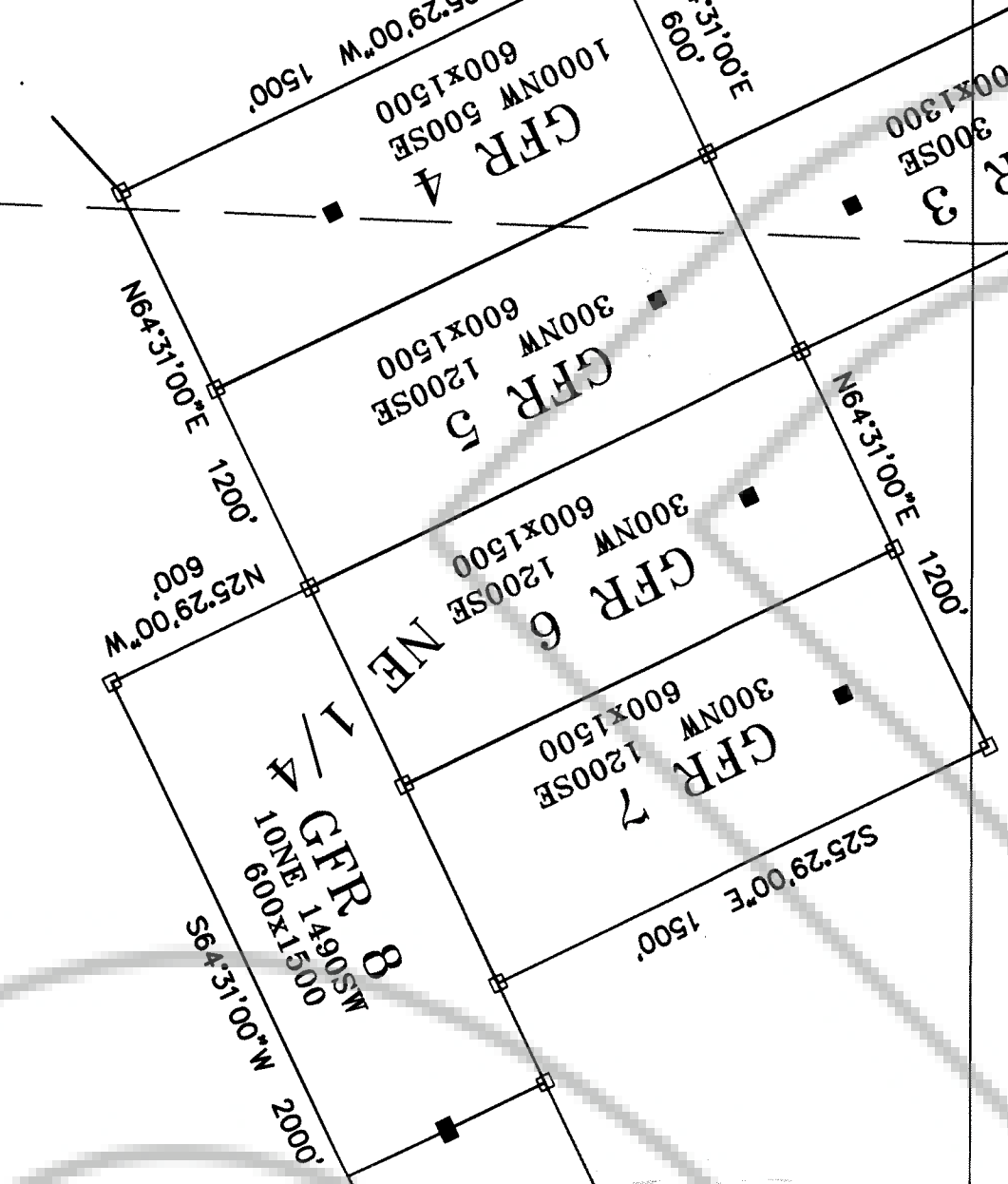
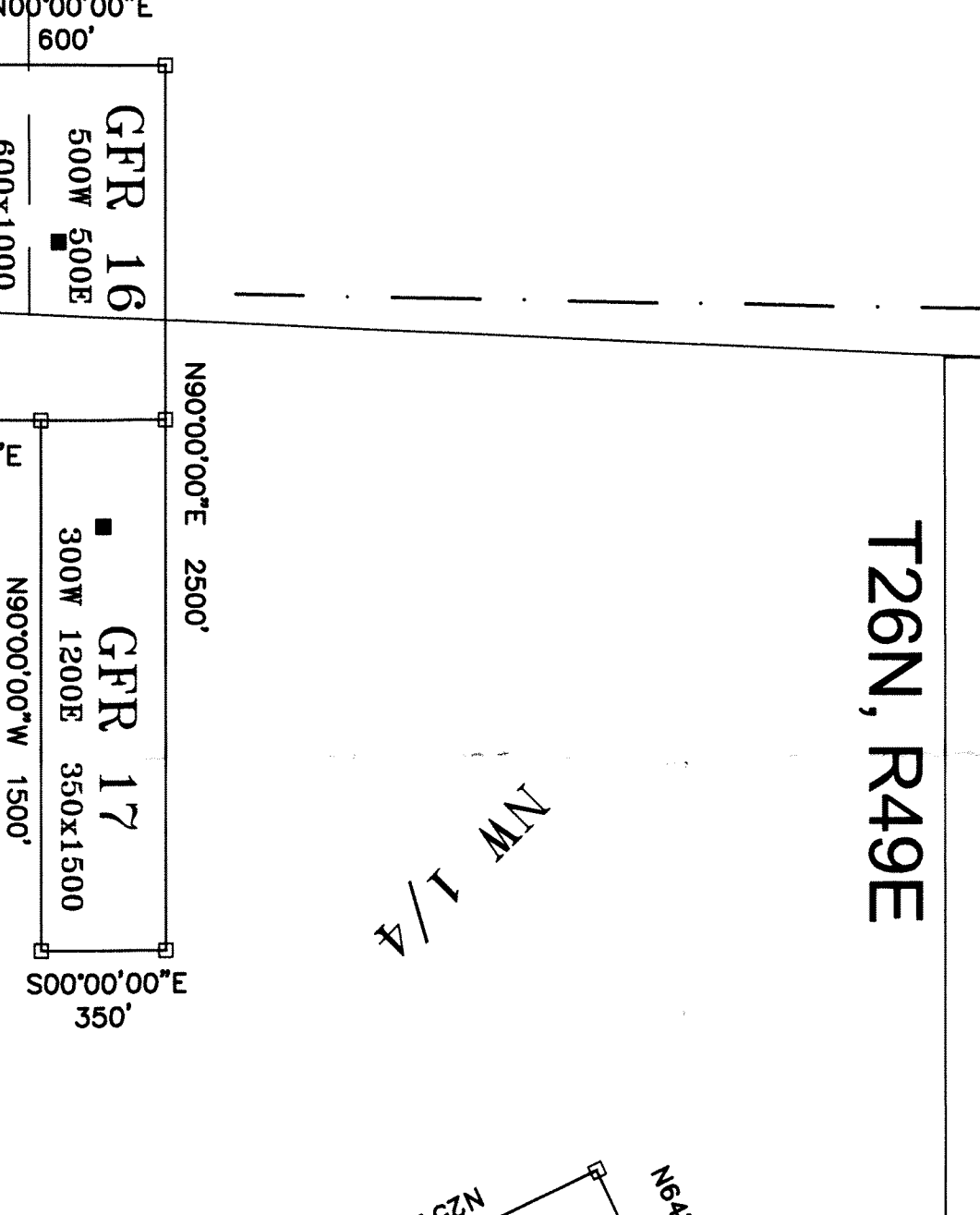
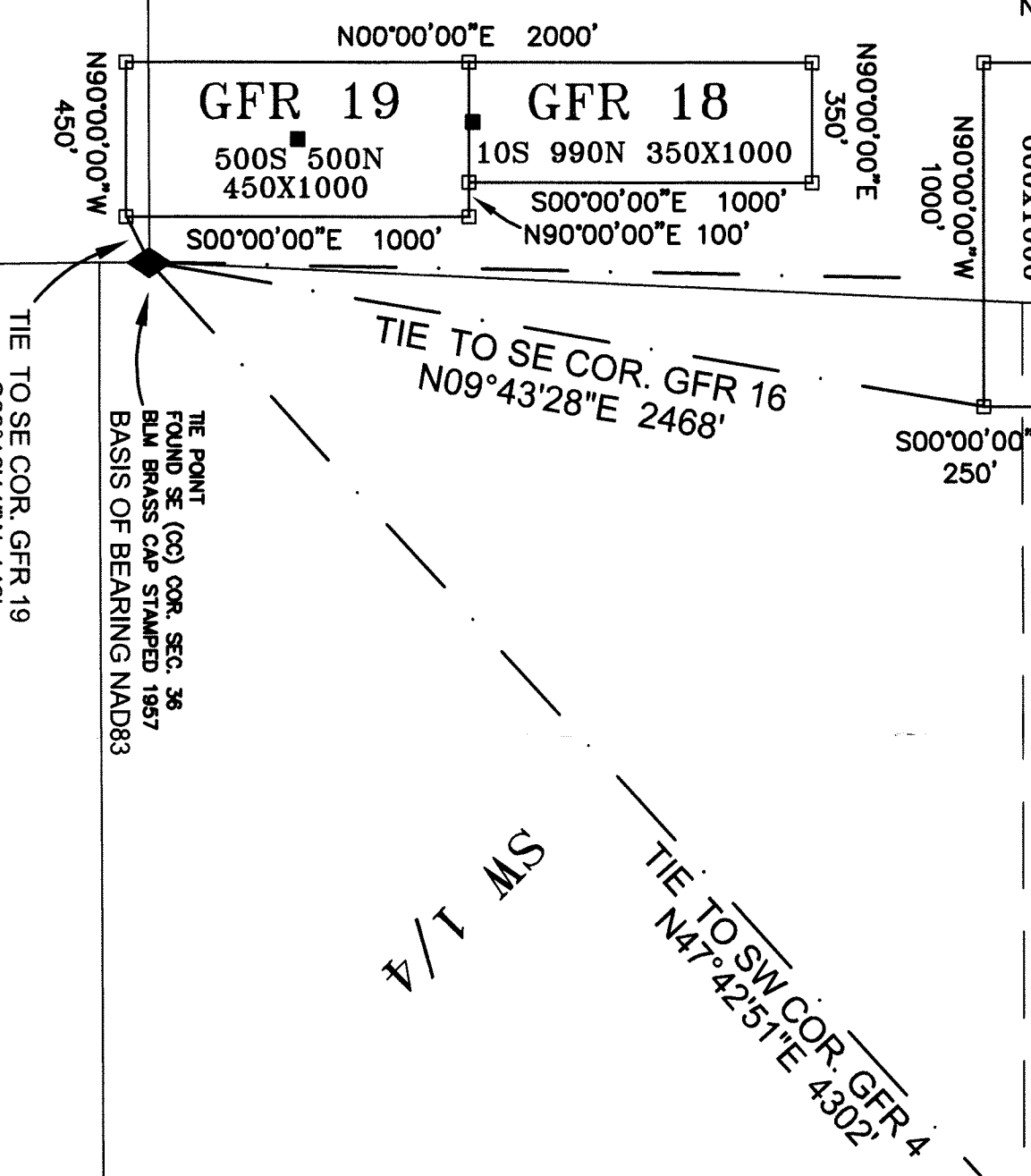
UNSURVEYED  
 NE 1/4  
 36  
 T27N, R48E  
 T27N, R49E  
 T26N, R48E  
 T27N, R48E  
 T26N, R49E

T27N, R49E  
 T26N, R49E  
 T27N, R49E  
 T26N, R49E

UNSURVEYED  
 6  
 T26N, R49E  
 T27N, R49E

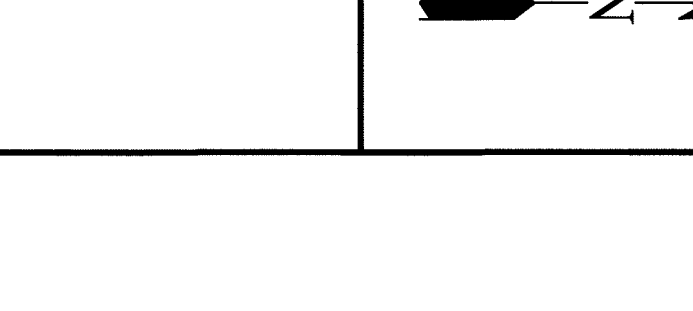
UNSURVEYED  
 5  
 T26N, R49E  
 T27N, R49E

UNSURVEYED  
 8  
 T26N, R49E  
 T27N, R49E



Official Record  
 DOC # 0218710  
 Recorded by: Mike Robalakti - Recorder  
 Fee: \$87.00  
 Page: 1 of 15  
 Book: 0000  
 Page: 0000

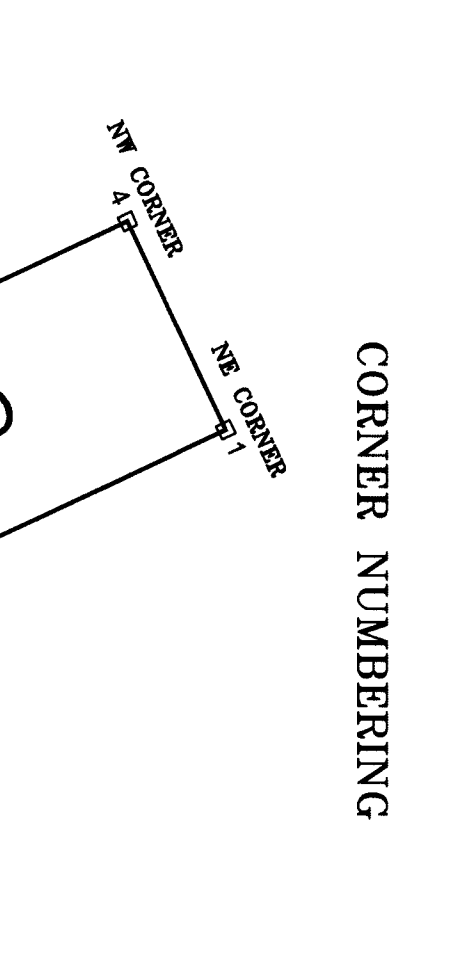
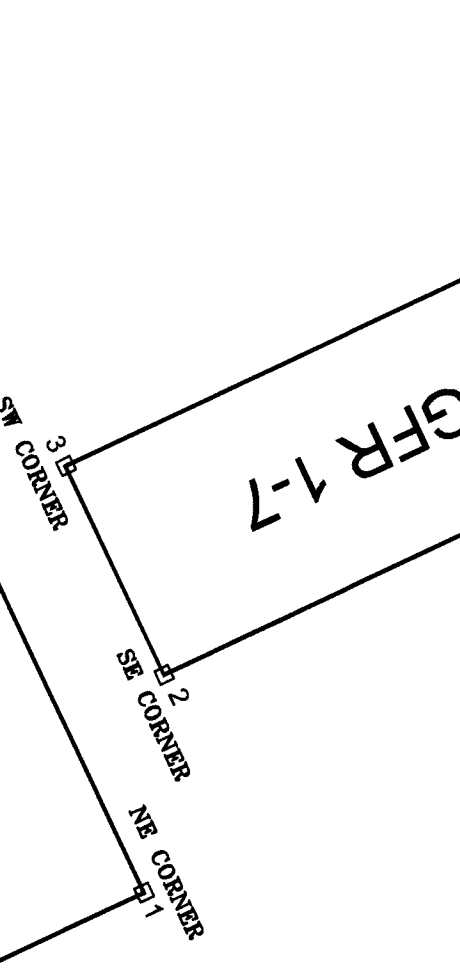
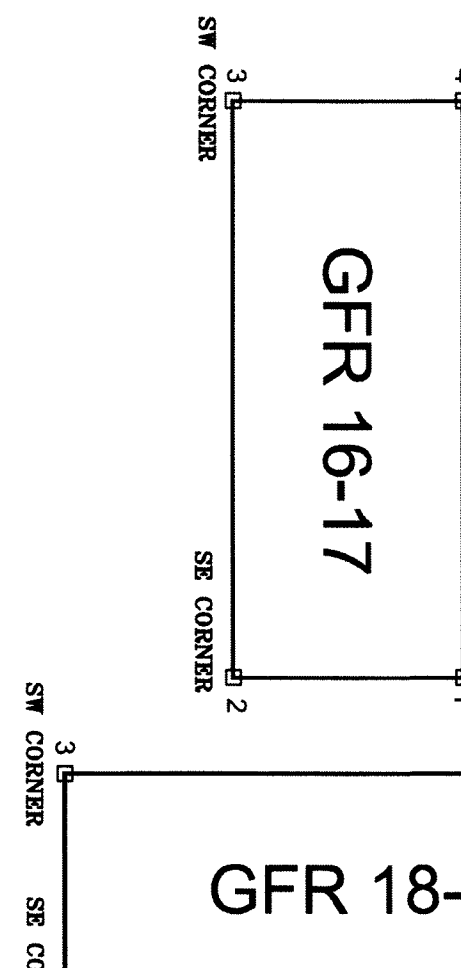
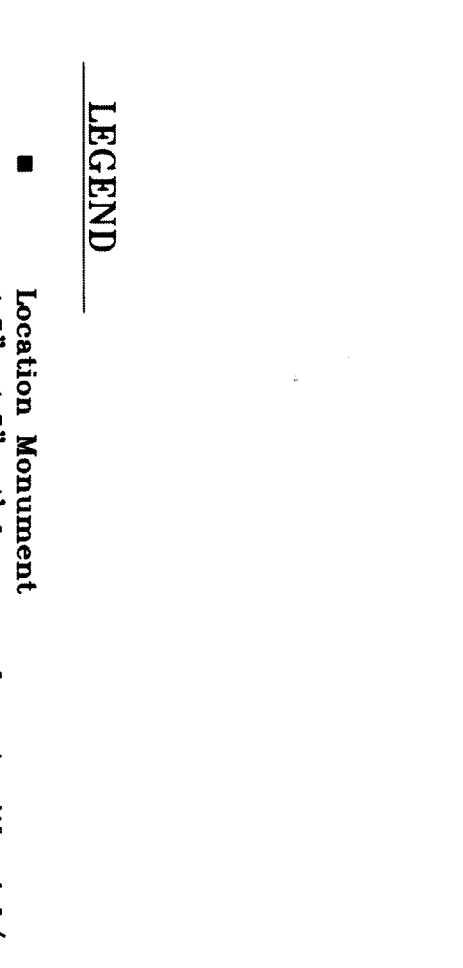
MAP OF LODGE CLAIMS  
 GFR 1 THROUGH 19  
 WITHIN  
 SECTION 1 T26N, R48E,  
 SECTIONS 25 AND 36 T27N, R48E,  
 SECTIONS 5 AND 6 T26N, R49E,  
 SECTIONS 31 AND 32 T27N, R49E,  
 MDM, EUREKA COUNTY, NEVADA  
 BARRICK GOLD U.S. INC.



LOCATOR: BARRICK GOLD U.S. INC.  
 ADDRESS: 136 E. SOUTH TEMPLE, SUITE 1800  
 LAKE CITY, UT 84111

LEGEND  
 ■ Location Monument  
 1.5" x 1.5" x 4' long wood post with vial/notice and scaled aluminum tag.  
 □ Claim Corner  
 1.5" x 1.5" x 4' long wood post with scaled aluminum tag attached  
 ◆ SECTION CORNER AS NOTED  
 UNSURVEYED Approved Govt. Surveys do not exist for all or part of Section boundaries.

LOCATION DATES:  
 7/19/11 = GFR 1-11, 13-17  
 7/21/11 = GFR 12  
 8/16/11 = GFR 18-19



CORNER NUMBERING