

DESCRIPTION

MAP OF: AB 7-8, 722-723, 732-733, 748-749, 758-759, 774-775, 784-785, 800-801, 810-811, 812-813, 822-823, 824-825, 834-835, 836-837, 846-847, 848-849, 858-859, 860-861, 870-871, 884-885, 894-895, & 920-921 ANGELO BELLI MINING CLAIMS, EUREKA COUNTY, NEVADA

NARRATIVE

SECTION LINES SHOWN ON THIS MAP WERE DERIVED FROM THE UNITED STATES DEPARTMENT OF INTERIOR GEOLOGICAL SURVEY QUADRANGLE: WORTHINGTON PEAK, NV 1985. BLM PROTRACTION (RECORD TYPE "RECT") DATED OCTOBER 26, 1964, AND CADASTRAL SURVEY DATED DECEMBER 13, 1881 WERE ALSO USED.

LEGEND

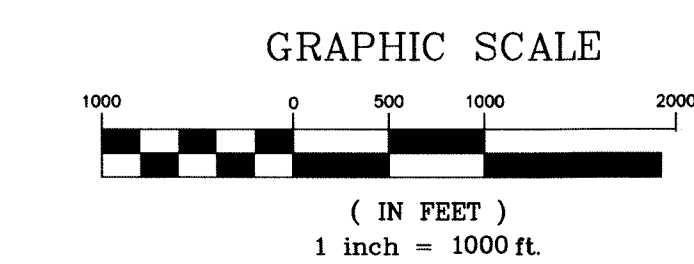
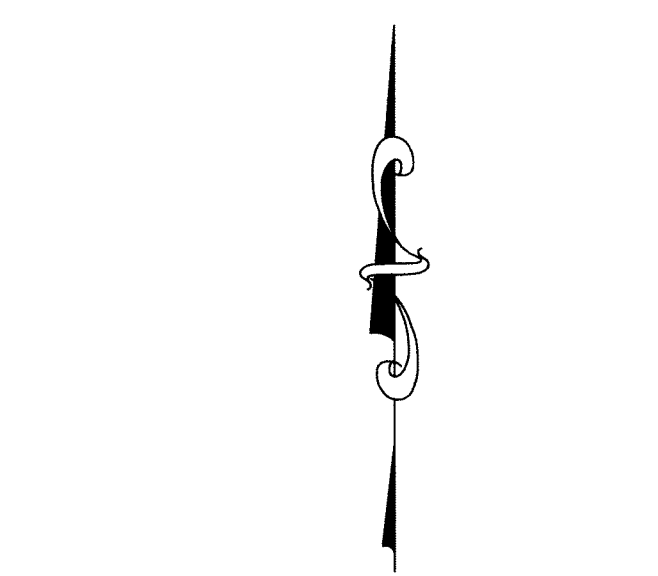
- SPECIFIES MINING MONUMENT SET 10' FROM END-CENTERS OF CLAIM. (UNLESS OTHERWISE NOTED ON PLAT)
- ◆ BLM (RECORD) SECTIONAL MONUMENT (UNLESS OTHERWISE NOTED ON PLAT)
- - - SECTION LINE
- - - TOWNSHIP OR RANGE LINE

NOTES:

ALL CLAIMS ARE 600' X 1500', WITH ALL LOCATION MONUMENTS OFFSET 10' FROM END-CENTERS (MID-POINT).

NORTHWEST CORNER OF AB 708 IS 1675 FEET SOUTH, AND 612 FEET WEST FROM THE NORTHEAST CORNER OF SECTION 11, TOWNSHIP 18 NORTH, RANGE 51 EAST, MOUNT DIABLO MERIDIAN, NEVADA.

LOCATOR: RENVIC ERICKSON FOR SILVER INTERNATIONAL INC.



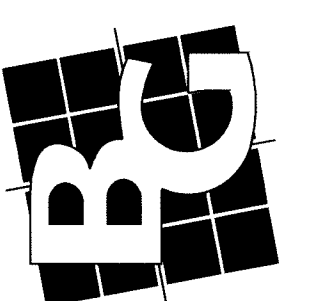
DOC # 0219042

12/05/2011 02:01 PM
Official Record
 Recording requested by:
 SILVER INTERNATIONAL, INC.
 Eureka County - NV
 Mike Rebaletti - Recorder
 Fee: \$664.00 Page 1 of 3
 RP11 Recorded By: FES
 Book- Page- 0000



ANGELO BELLI DRAWING OF RECORD
 LOCATED IN TOWNSHIP 18 NORTH, RANGE 51 EAST,
 EUREKA COUNTY, STATE OF NEVADA, USA
 PREPARED FOR:
 SILVER INTERNATIONAL INC.
 545 SOUTH VALLEY VIEW DR.
 ST. GEORGE, UT 84770

BUSH & GUDGELL, INC.
 Engineers - Planners - Surveyors
 205 East Tabernacle Suite #4
 St. George, Utah 84770
 Phone (435) 673-2337 / Fax (435) 673-3161
 www.bushandgudgell.com



DATE: 11/29/11
 DRAWN: BES
 APPROVED:
 SCALE: 1" = 1000'
 JOB NO.: 101103

ANGELO BELLI
 RECORD OF MINING CLAIMS
 TOWNSHIP 18 N, RANGE 51 E
 MOUNT DIABLO MERIDIAN

T18N, R51E MDB&M

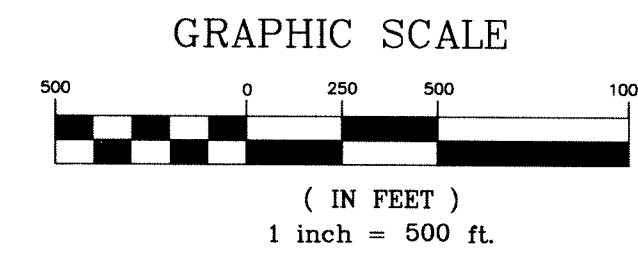
SOUTH 1675'

WEST 612'

EAST 3000'

AB 708	• •	AB 709
AB 723	• •	AB 722
AB 732	• •	AB 733
AB 749	• •	AB 748
AB 758	• •	AB 759
AB 775	• •	AB 774
AB 784	• •	AB 785
AB 801	• •	AB 800
AB 810	• •	AB 811
AB 813	• •	AB 812
AB 822	• •	AB 823
AB 825	• •	AB 824
AB 834	• •	AB 835
AB 837	• •	AB 836

R 51 E
R 52 E



11

12

7

14

13

18

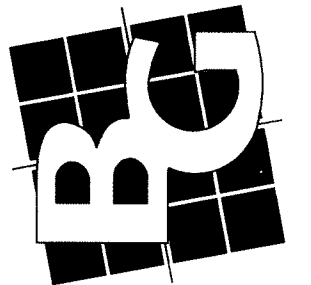
NORTH 13200'

SOUTH 13200'

DOC # 0219042
12/06/2011 02:01 pm
Official Record
Recording requested by:
SILVER INTERESTS, INC.
Eureka County - NV
Mike Rebaleati - Recorder
Fee: \$664.00 Page 12 of 13
RPT: Recorder By: FDS
Book- Page- 0000

0219042

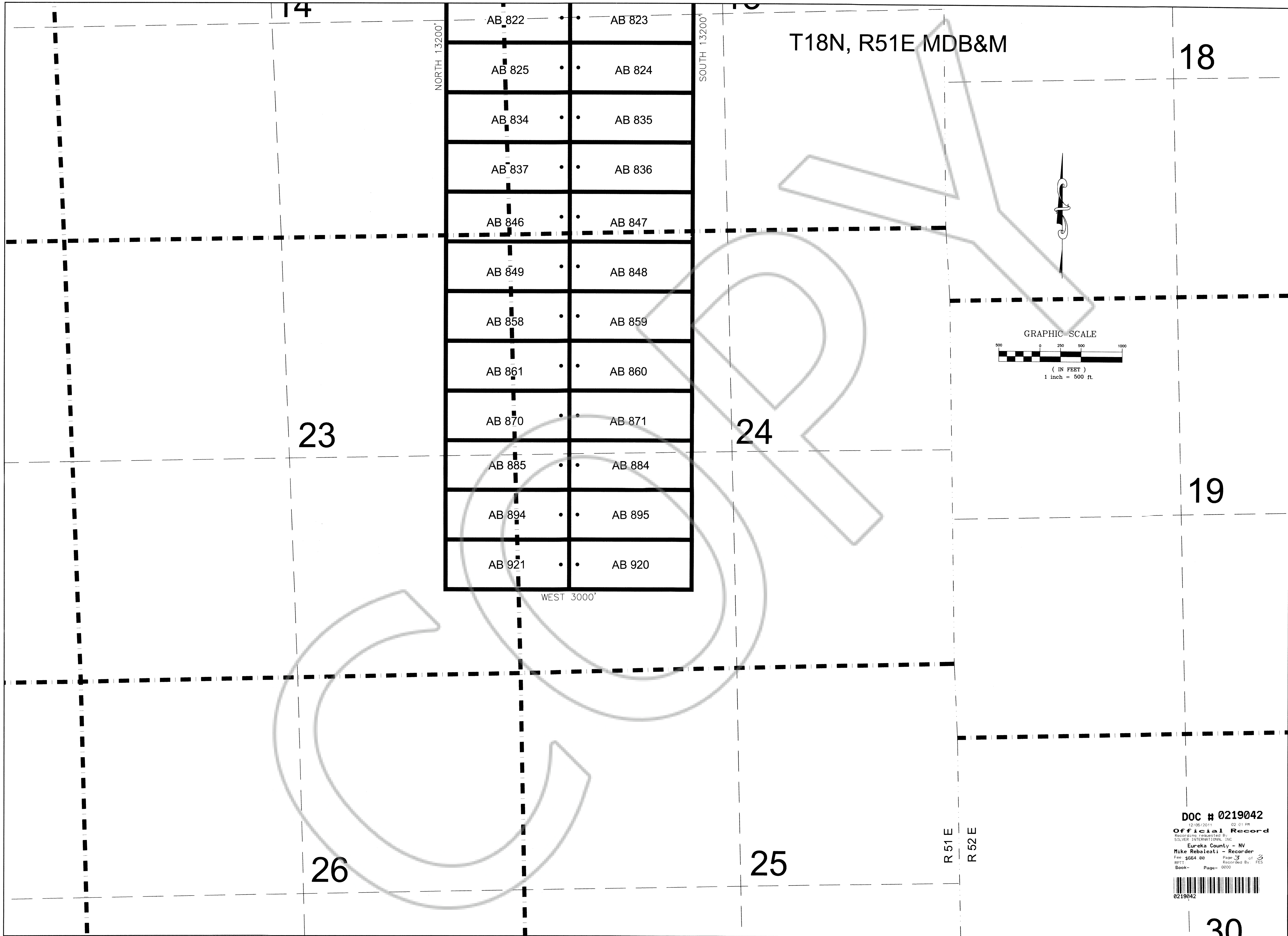
BUSH & GUDGELL, INC.
Engineers - Planners - Surveyors
205 East Tabernacle Suite #4
St. George, Utah 84770
Phone (435) 673-2337 / Fax (435) 673-3161
www.bushandgudgell.com



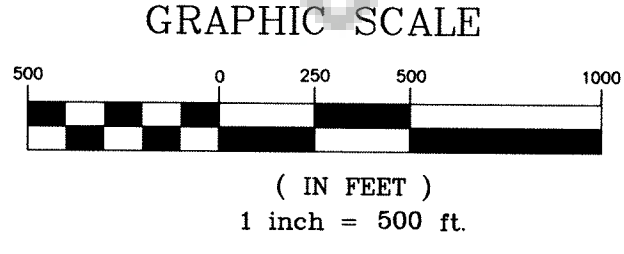
DATE: 11/29/11
DRAWN: BRS
APPROVED:
SCALE: 1"=500'
JOB NO.: 101103

ANGELO BELLI RECORD OF MINING CLAIMS
TOWNSHIP 18 NORTH, RANGES 51 EAST
MOUNT DIABLO MERIDIAN
NAD 83 UTM ZONE 11

SHEET 2 OF 3 SHEETS
FILE: 101103



T18N, R51E MDB&M



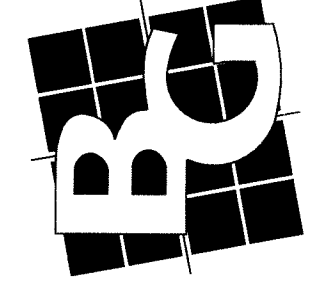
DOC # 0219042

12/05/2011 02:01 PM
Official Record
 RECORDED BY:
 SILVER INTERNATIONAL, INC.
 Eureka County - NV
 Mike Rebesti - Recorder
 Fee \$664.00 Page 37 of 37
 RPT- Recorded By PES
 Book- Page- 0000



BUSH & GUDGELL, INC.
 Engineers - Planners - Surveyors

205 East Tabernacle Suite #4
 St. George, Utah 84770
 Phone (435) 673-2337 / Fax (435) 673-3161
 www.bushandgudgell.com



DATE: 11/29/11
 DRAWN: BRS
 APPROVED:
 SCALE: 1"=500'
 JOB NO. 101103

ANGELO BELLI RECORD OF MINING CLAIMS
 TOWNSHIP 18 NORTH, RANGES 51 EAST
 MOUNT DIABLO MERIDIAN
 NAD 83 UTM ZONE 11

SHEET 3 OF 3 SHEETS
 FILE: 101103