

DESCRIPTION

MAP OF: EX 1-5 & 7-33 EXCELSIOR GOLD INC. MINING CLAIMS, WHITE PINE COUNTY, NEVADA

NARRATIVE

SECTION LINES SHOWN ON THIS MAP WERE DERIVED FROM THE UNITED STATES DEPARTMENT OF INTERIOR GEOLOGICAL SURVEY QUADRANGLE; NORTH SCHELL PEAK # 39114-D5-TM-024. ALL MAPS ARE DATED 1982. BLM PROTRACTION (RECORD TYPE "RECT") DATED FEB 03, 1964 WAS ALSO USED.

LEGEND

- SPECIFIES MINING MONUMENT SET 10' FROM END-CENTERS OF CLAIM. (UNLESS OTHERWISE NOTED ON PLAT)
- ◆ BLM (RECORD) SECTIONAL MONUMENT (UNLESS OTHERWISE NOTED ON PLAT)
- ▬ SECTION LINE
- ▬ TOWNSHIP OR RANGE LINE

NOTES:

ALL CLAIMS ARE 600' X 1500', WITH ALL LOCATION MONUMENTS OFFSET 10' FROM END-CENTERS (MID-POINT).

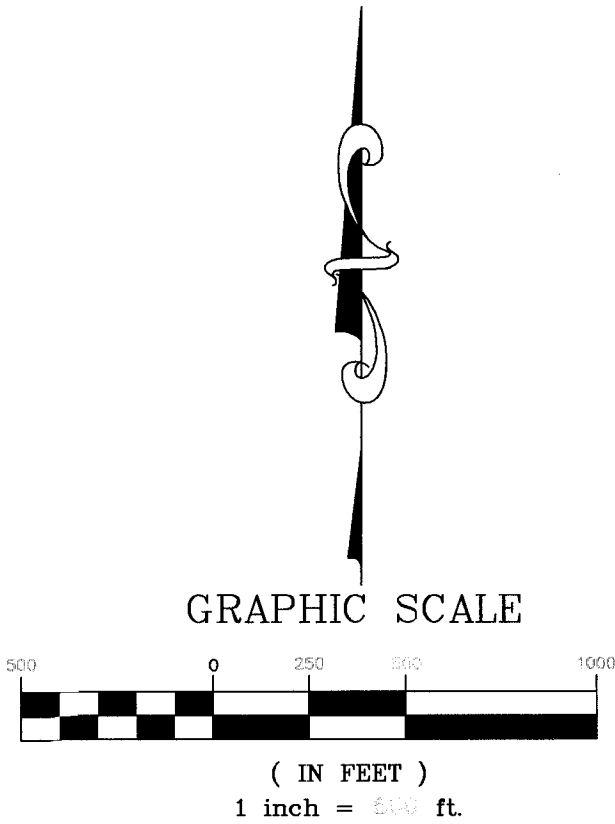
NORTHEAST CORNER OF EX 3 IS 1480 FEET WEST AND 97 FEET NORTH OF THE NORTHEAST SECTION CORNER OF SECTION 33 OF TOWNSHIP 18 NORTH RANGE 53 EAST, MOUNT DIABLO BASE AND MERIDIAN, NEVADA.

ALSO

THE SOUTHEAST CORNER OF EX 43 IS 1103 FEET EAST AND 599 FEET NORTH OF THE SOUTHWEST SECTION CORNER OF SECTION 10 OF TOWNSHIP 18 NORTH RANGE 53 EAST, MOUNT DIABLO BASE AND MERIDIAN, NEVADA.

CLAIM EX 1 MONUMENT IS LOCATED 150 FEET FROM THE WEST MID POINT AS SHOWN ON THIS MAP.

LOCATOR: RENVIC ERICSON FOR SILVER VIKING CORP.



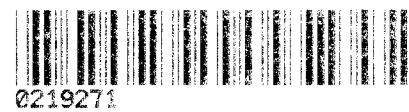
RECORD OF MINING CLAIMS

LOCATED IN
SECTION 28, 32, 33, & 34 TOWNSHIP 19 NORTH, RANGE 53 EAST,
SECTION 3, 4, 9, & 10 TOWNSHIP 18 NORTH, RANGE 53 EAST,
MOUNT DIABLO BASE AND MERIDIAN NEVADA

PREPARED FOR:
SILVER VIKING CORP.
545 SOUTH VALLEY VIEW DR.
ST. GEORGE, UT 84770

DOC # 0219271

Official Record
Eureka County - NV
Mike Rebsaetli - Recorder
Fee \$664.00
Book - Page - 700K



BUSH & GUDGELL, INC.

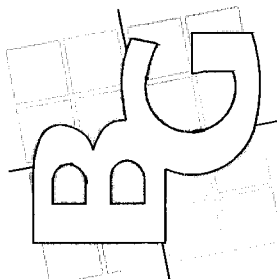
Engineers - Planners - Surveyors

205 East Tabernacle Suite #4

St. George, Utah 84770

Phone (435) 673-2337 / Fax (435) 673-3161

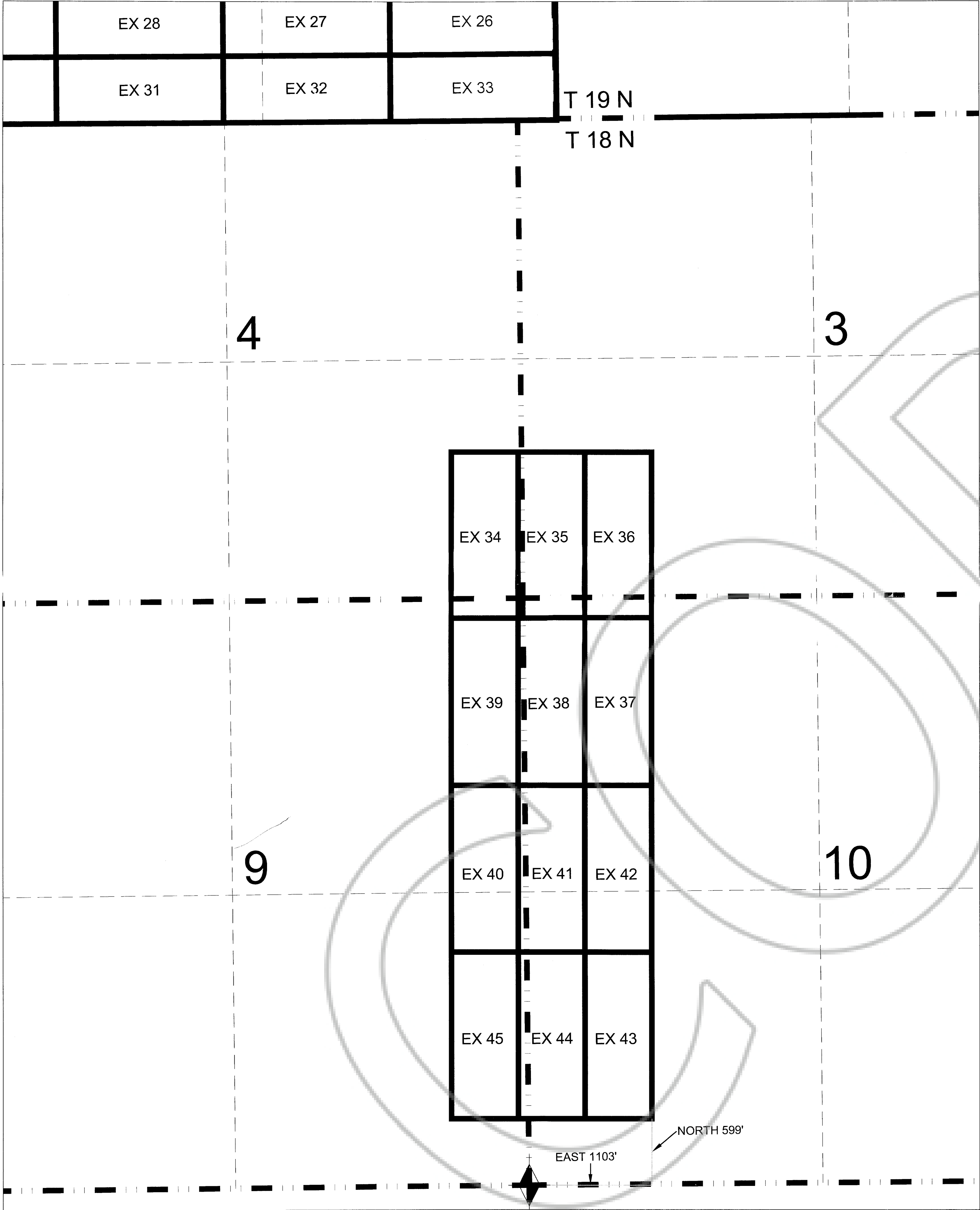
www.bushandgudgell.com



DATE: 12/03/11
DRAWN: JGH
APPROVED:
SCALE: 1" = 200'
JOB NO. 111122

EXCELSIOR GOLD MINING CLAIMS
SEC 28, 32, 33, & 34 T19N, R53E
MOUNT DIABLO BASE & MERIDIAN
SEC 3, 4, 9, & 10 T18N, R53E

SHEET
OF
SHEETS
FILE: 0219271



DESCRIPTION

MAP OF: EX 1-5 & 7-33 EXCELSIOR GOLD INC. MINING CLAIMS, WHITE PINE COUNTY, NEVADA

NARRATIVE

SECTION LINES SHOWN ON THIS MAP WERE DERIVED FROM THE UNITED STATES DEPARTMENT OF INTERIOR GEOLOGICAL SURVEY QUADRANGLE; NORTH SCHELL PEAK # 39114-D5-TM-024 ALL MAPS ARE DATED 1982. BLM PROTRACTION (RECORD TYPE "RECT") DATED FEB 03, 1964 WAS ALSO USED.

LEGEND

- SPECIFIES MINING MONUMENT SET 10' FROM END-CENTERS OF CLAIM. (UNLESS OTHERWISE NOTED ON PLAT)
- ◆ BLM (RECORD) SECTIONAL MONUMENT (UNLESS OTHERWISE NOTED ON PLAT)
- SECTION LINE
- TOWNSHIP OR RANGE LINE

NOTES:

ALL CLAIMS ARE 600' X 1500', WITH ALL LOCATION MONUMENTS OFFSET 10' FROM END-CENTERS (MID-POINT).

NORTHEAST CORNER OF EX 3 IS 1480 FEET WEST AND 97 FEET NORTH OF THE NORTHEAST SECTION CORNER OF SECTION 33 OF TOWNSHIP 18 NORTH RANGE 53 EAST, MOUNT DIABLO BASE AND MERIDIAN, NEVADA.

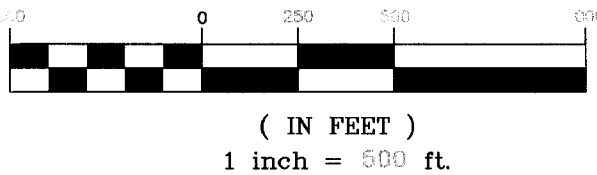
ALSO

THE SOUTHEAST CORNER OF EX 43 IS 1103 FEET EAST AND 599 FEET NORTH OF THE SOUTHWEST SECTION CORNER OF SECTION 10 OF TOWNSHIP 18 NORTH RANGE 53 EAST, MOUNT DIABLO BASE AND MERIDIAN, NEVADA.

CLAIM EX 1 MONUMENT IS LOCATED 150 FEET FROM THE WEST MID POINT AS SHOWN ON THIS MAP.

LOCATOR: RENVIC ERICSON FOR SILVER VIKING CORP.

GRAPHIC SCALE



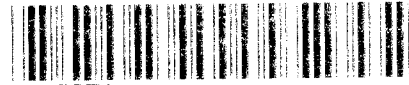
RECORD OF MINING CLAIMS

LOCATED IN
SECTION 28, 32, 33, & 34 TOWNSHIP 19 NORTH, RANGE 53 EAST,
SECTION 3, 4, 9, & 10 TOWNSHIP 18 NORTH, RANGE 53 EAST,
MOUNT DIABLO BASE AND MERIDIAN NEVADA

PREPARED FOR:
SILVER VIKING CORP.
545 SOUTH VALLEY VIEW DR.
ST. GEORGE, UT 84770

DOC # 0219271

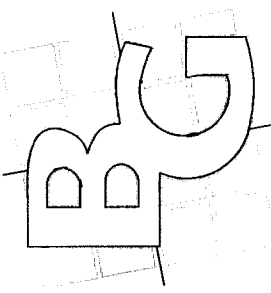
Official Record
Recorded by
Eureka County - NV
Mike Rebecat - Recorder
Fee \$564.00
Book - Page - 0000



0219271

BUSH & GUDGELL, INC.

Engineers - Planners - Surveyors
205 East Tabernacle Suite #4
St. George, Utah 84770
Phone (435) 673-2337 / Fax (435) 673-3161
www.bushandgudgell.com



DATE: 12/20/2011
DRAWN: 12/20/2011
APPROVED: 12/20/2011
SCALE: 1" = 500'
JOB NO. 0219271

EXCELSIOR GOLD INC. MINING CLAIMS
SILVER VIKING CORP.
MOUNT DIABLO BASE AND MERIDIAN
SEC 3, 4, 9, & 10 T18N, R53E

SHEET 1 OF 2
FILE: 0219271