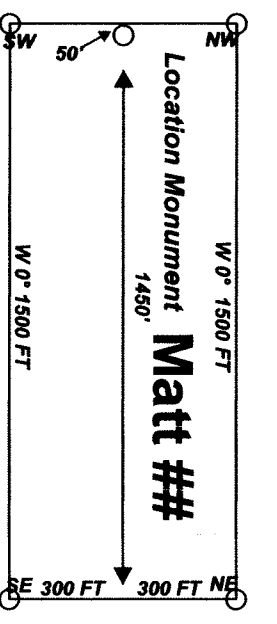
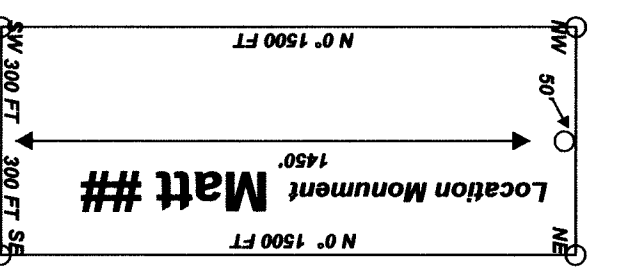
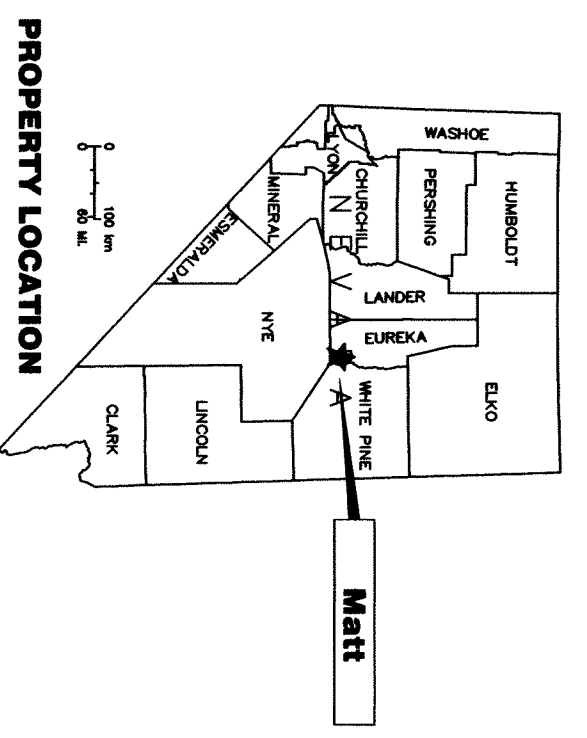


From the SW corner of Section 36, T16N, R52E the:
 SW Corner of Matt 16 bears approximately 1077 feet North and 1797 feet West
 SW Corner of Matt 17 bears approximately 1077 feet North and 1197 feet West
 SW Corner of Matt 18 bears approximately 1077 feet North and 597 feet West
 SW Corner of Matt 19 bears approximately 1077 feet North and 3 feet East
 SW Corner of Matt 20 bears approximately 477 feet North and 1797 feet West
 SW Corner of Matt 21 bears approximately 477 feet North and 367 feet West
 SW Corner of Matt 22 bears approximately 477 feet North and 1088 feet East
 SW Corner of Matt 23 bears approximately 477 feet North and 2588 feet East
 SW Corner of Matt 24 bears approximately 477 feet North and 4078 feet East

12

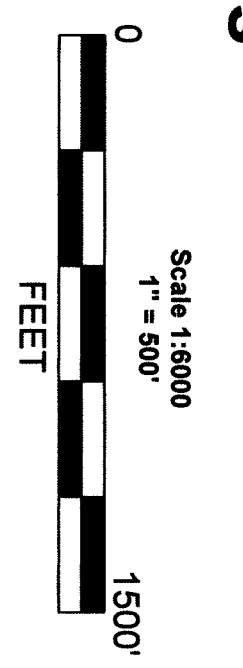
Matt 16-24 Lode claims located October 4, 2011 in Section 31, Township 16 North, Range 53 East and Section 36, Township 16 North, Range 52 East, MDB&M, Eureka County, Nevada.

Locator:
 American Vanadium US Inc.
 P.O. Box 983
 Eureka, Nevada 89316



Location Map for Matt 16-24 Lode Claims
 Sheet 1 of 1

Notes:
 Claim lengths are 1500' except where noted otherwise. Location Monuments are set 50' from claim end lines except where noted otherwise. All location and corner monuments are 1 1/2" x 1 1/2" x 4" measuring at least 1/2" x 1 1/2" x 4" corners so marked on the posts with black ink, or marked on a scribed aluminum tag attached to the post. Bearings based on UTM North.



MINING CLAIM LOCATION MAP
 FOR MATT 16-24 LODGE CLAIMS
 American Vanadium US Inc.
 P.O. Box 983
 Eureka, Nevada 89316
 Aca282808-Gibahlin
 D:\locmap\16-24\16-24.mxd
 Drawn By: R.L. Smith
 Datum: 1927 Projection: UTM Zone 11
 Units: Feet

DOC # 0219283
 12/20/2011 02:22 PM
 OFFICIAL RECORD
 Eureka County - NV
 Mike Egan, County Recorder
 Fee: \$135.00
 Book: 0000
 Page: 0000
 Recorded By: FES
 0219283