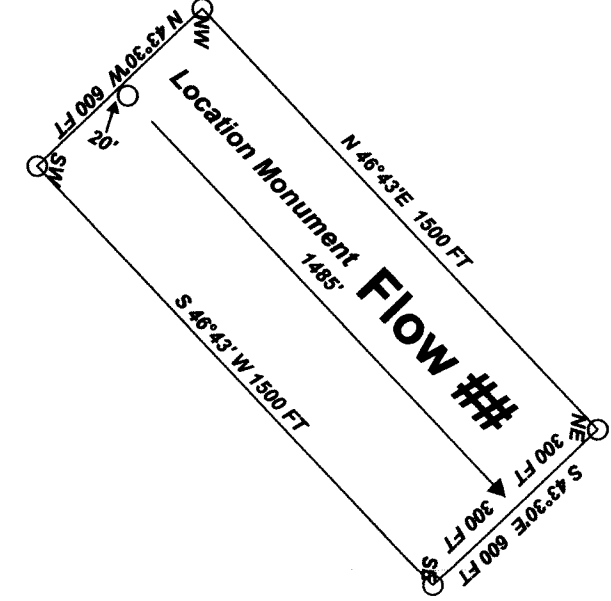
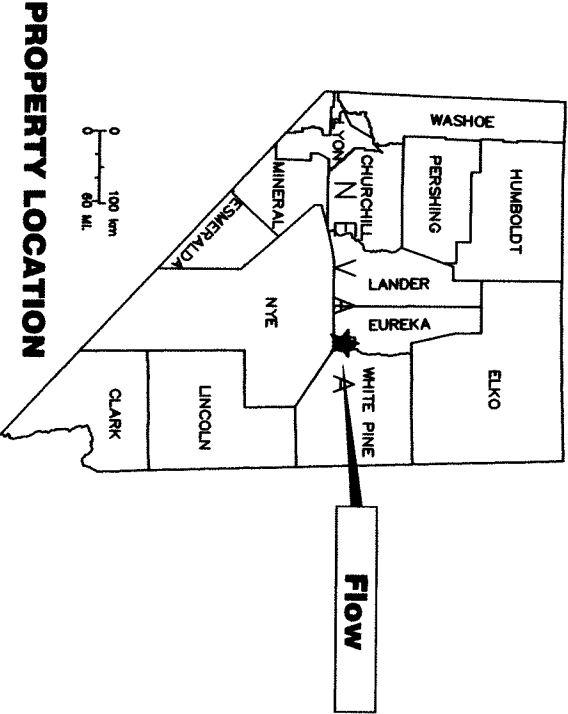


From the SW corner of Section 36, T16N, R52E the:
NE Corner of Flow 7 bears approximately 6628 feet South and 2651 feet East
NE Corner of Flow 8 bears approximately 5607 feet South and 3739 feet East
NE Corner of Flow 9 bears approximately 7061 feet South and 3064 feet East
NE Corner of Flow 10 bears approximately 6040 feet South and 4152 feet East
NE Corner of Flow 11 bears approximately 7494 feet South and 3477 feet East
NE Corner of Flow 12 bears approximately 6472 feet South and 4565 feet East

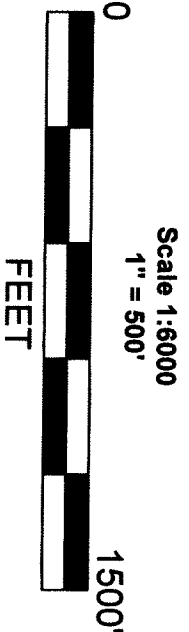
Flow 7-12 Lode claims located
December 17, 2011 in Section 7,
Township 36 North, Range 52 East,
MDBSM, Eureka County, Nevada.

Locator:
American Vanadium US Inc.
P.O. Box 983
Eureka, Nevada 89316



Location Map for Flow 7-12 Lode Claims

Sheet 1 of 1



Notes:
Location Monuments are set 20' from
claim end lines except where noted
otherwise. All location and corner
monuments are wooden posts
measuring at least 1 1/2" x 4".
Corners so marked on the posts with
black ink, or marked on a scribed
aluminum tag attached to the post.
Bearings based on UTM North.

MINING CLAIM LOCATION MAP FOR FLOW 7-12 LODE CLAIMS
American Vanadium US Inc. P.O. Box 983 Eureka, Nevada 89316
Acad2000-GlobeIn! December 17, 2011 Drawn By: R.J. Smith
Datum: 1927 Projection: UTM Zone 11 Units: Feet

DOC # 0219290
OFFICIAL RECORD
Recording Agent: R. B. Smith
Eureka County - NV
Mike Robleski - Recorder
Fees: \$34.00
Page: 0000
Book: 0219290