

Map of
K 100 - 141 Lode Mining Claims
in Sections 14, 15, 21-23, 27, 28, T25N, R52E, MDB&M
Eureka County, Nevada

LOCATOR

Arden L. Larson
P.O. Box 1893
Grand Junction, Colorado 81502

LOCATION DATES

K 100-103: November 11, 2011
K 104-124: November 9, 2011
K 125-127, 131-134: November 8, 2011
K 128-130, 135-141: November 10, 2011

NOTES

All corners and location monuments
are red-topped 2 x 2 x 4' wood posts
with aluminum tags inscribed with the
claim name and corner position.

All claims are 600' x 1500' with
location monuments offset 10' from
end-centers as shown.

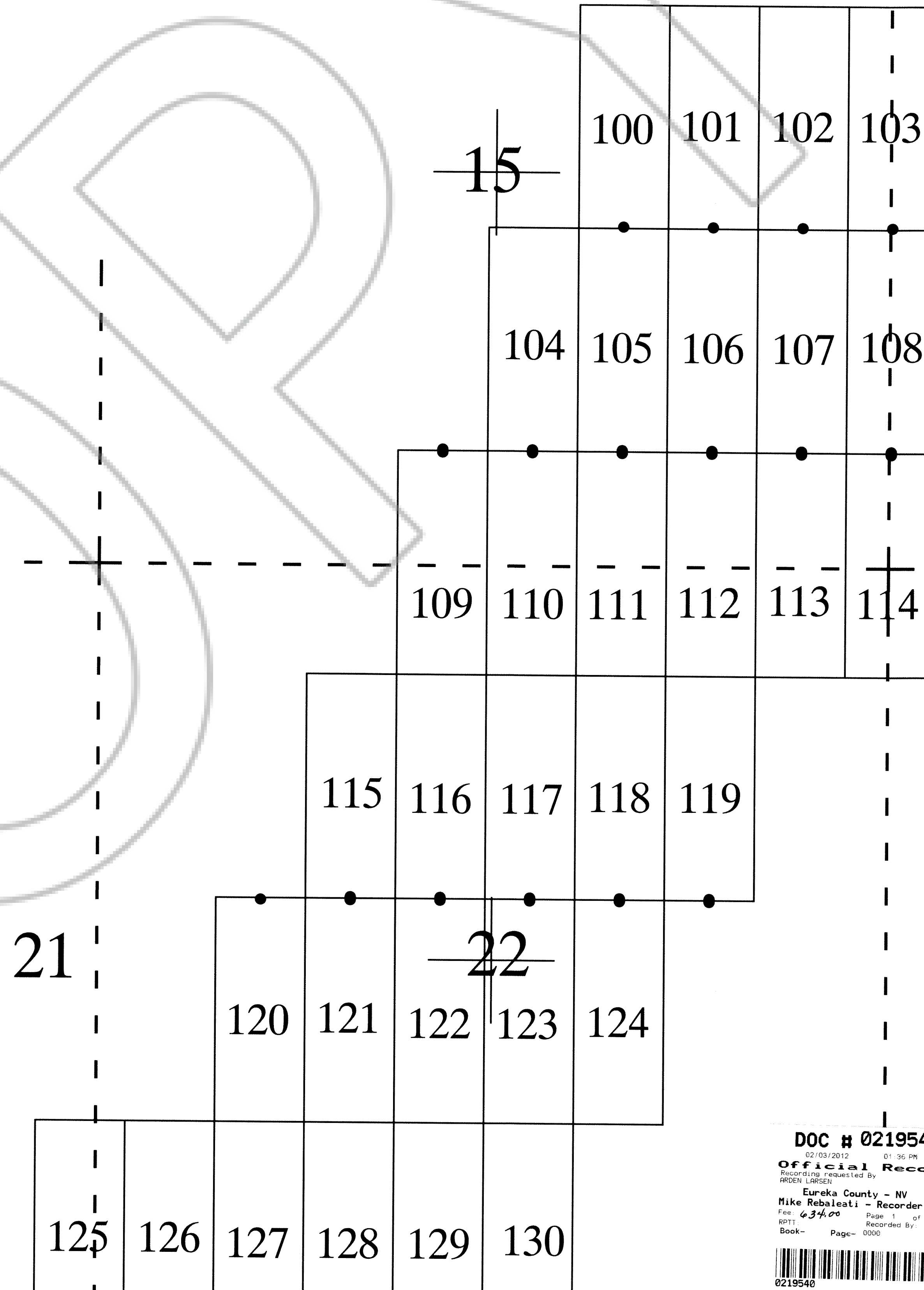
The section lines shown are taken from
the 1976 BLM protraction diagram No. 164

CLAIM TIE

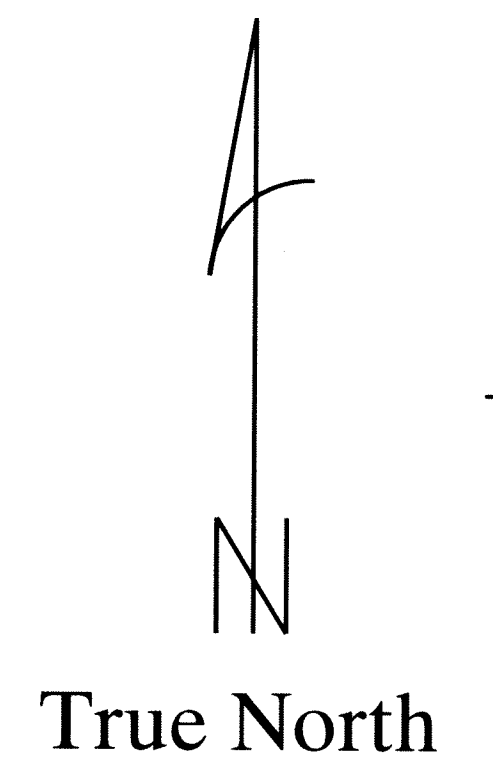
All claims are tied to the SW corner of Section 31, T25N, R52E,
MDB&M,
which is also the township corner, being a rock cairn and t-post found
at GPS Nad 27 LL coordinates of 39 deg 59' 48.92"N,
116 deg 09' 29.378"E, which is 4' N and 3' W of record position as
shown on the 1976 BLM Protraction Diagram No. 164.

The NW corner of K 125 is 12,110' North and 15,442' East of the SW
corner of Section 31 as described above.

T25N-R52E



DOC # 0219540
02/03/2012 01:36 PM
Official Record
Recording requested by
ARDEN LARSEN
Eureka County - NV
Mike Rebaletti - Recorder
Fee: 634.00 Page 1 of 2
BPT: Recorded By: FES
Book- Page- 0000
0219540



Map of
K 100 - 141 Lode Mining Claims
in Sections 14, 15, 21-23, 27, 28, T25N, R52E, MDB&M
Eureka County, Nevada

LOCATOR

Arden L. Larson
P.O. Box 1893
Grand Junction, Colorado 81502

LOCATION DATES

K 100-103: November 11, 2011
K 104-124: November 9, 2011
K 125-127, 131-134: November 8, 2011
K 128-130, 135-141: November 10, 2011

NOTES

All corners and location monuments
are red-topped 2 x 2 x 4' wood posts
with aluminum tags inscribed with the
claim name and corner position.

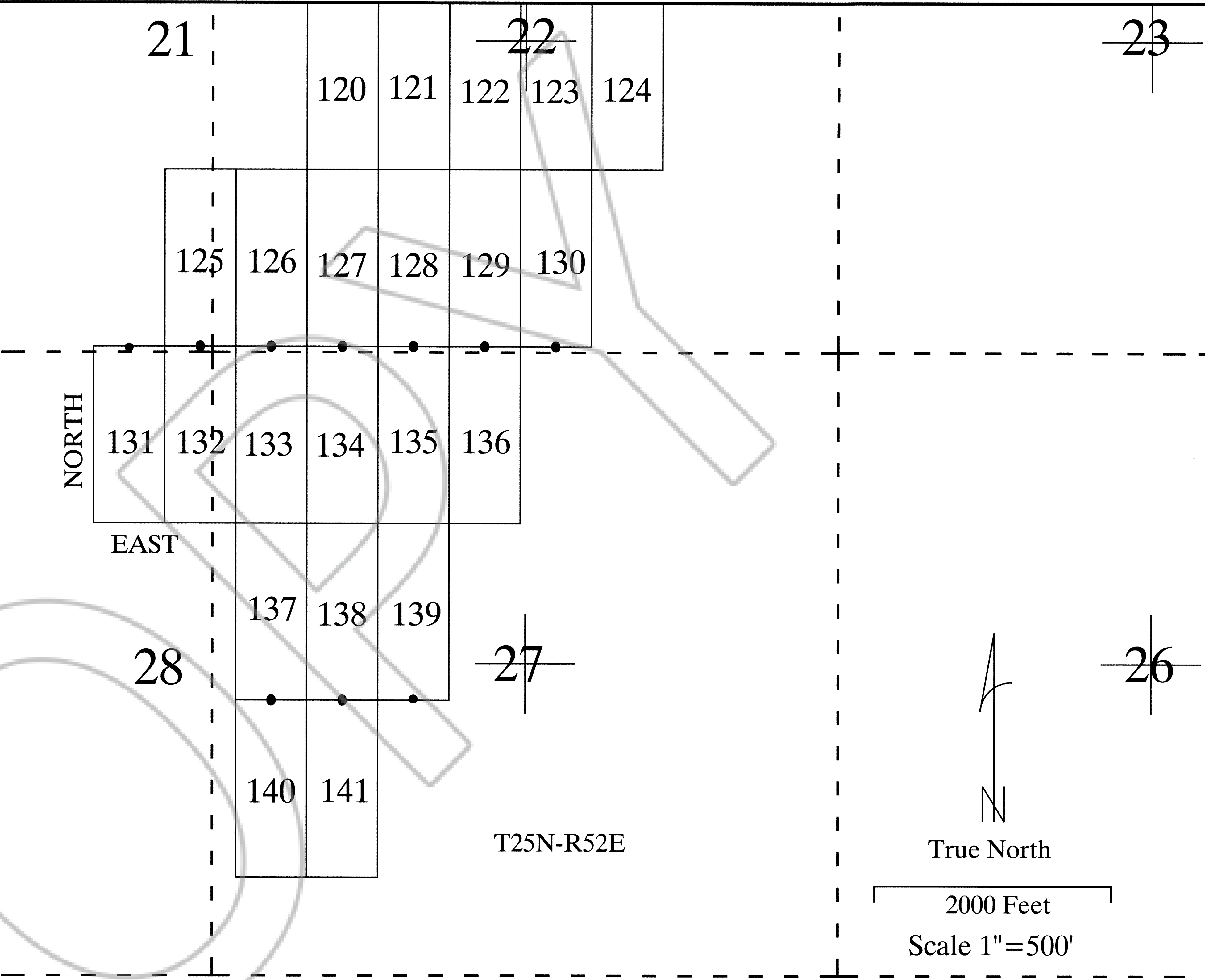
All claims are 600' x 1500' with
location monuments offset 10' from
end-centers as shown.

The section lines shown are taken from
the 1976 BLM protraction diagram No. 164

CLAIM TIE

All claims are tied to the SW corner of Section 31, T25N, R52E,
MDB&M,
which is also the township corner, being a rock cairn and t-post found
at GPS Nad 27 LL coordinates of 39 deg 59' 48.92"N,
116 deg 09' 29.378"E, which is 4' N and 3' W of record position as
shown on the 1976 BLM Protraction Diagram No. 164.

The SW corner of K 140 is 6,110' North and 16,042' East of the SW
corner of Section 31 as described above.



DOC # 0219540

02/03/2012 01:36 PM
Official Record
Recording requested By
ARDEN LARSEN
Eureka County - NV
Mike Rebaleati - Recorder
Fee \$634.00 Page 2 of 2
Book- 0000 Record By: FLS
Book- Page- 0000

