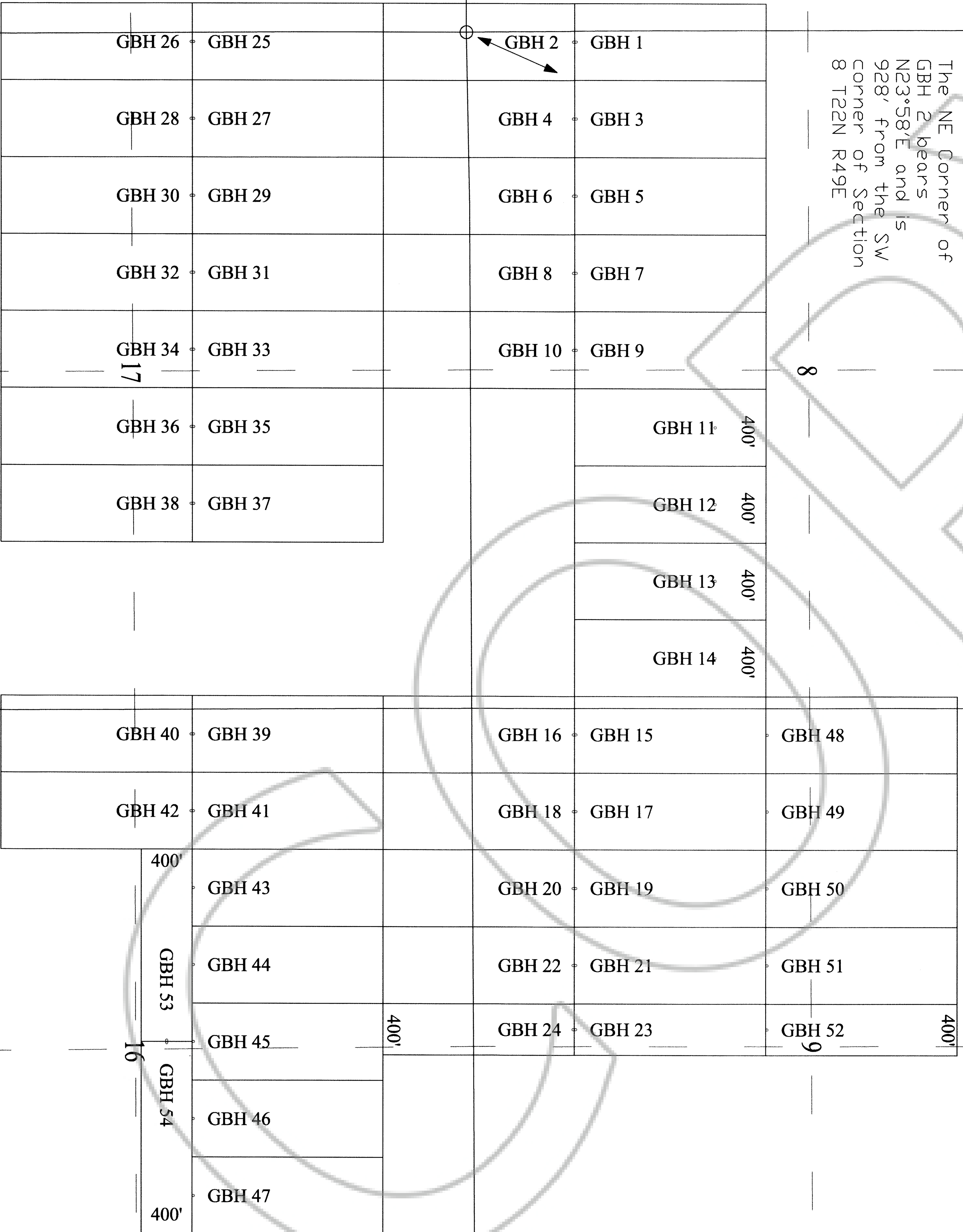


T23N R49E
T22N R49E

5

4

The NE Corner of
GBH 2 bears
N23°58'E and is
928' from the SW
corner of Section
8 T22N R49E

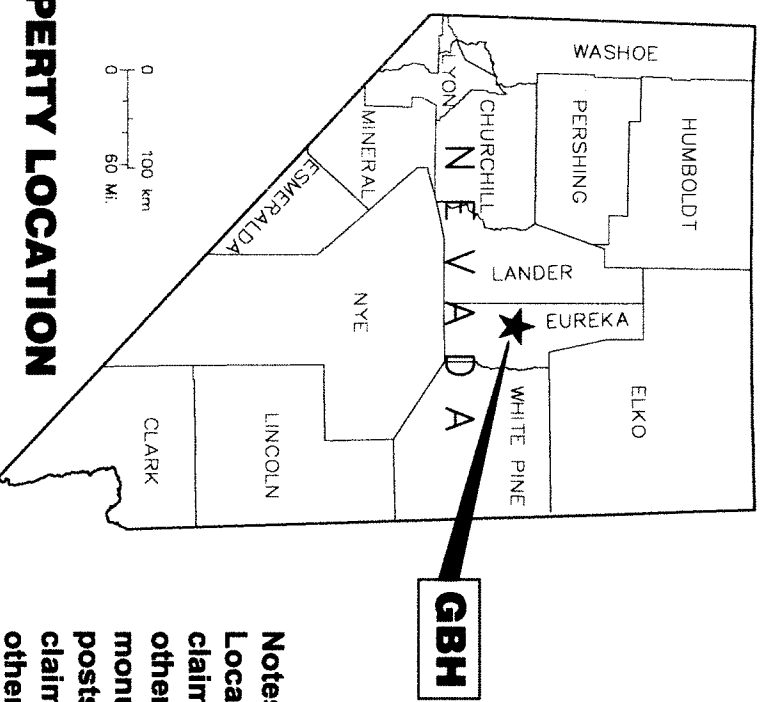


**Location Map for
GBH 1-54
Sheet 1 of 1**

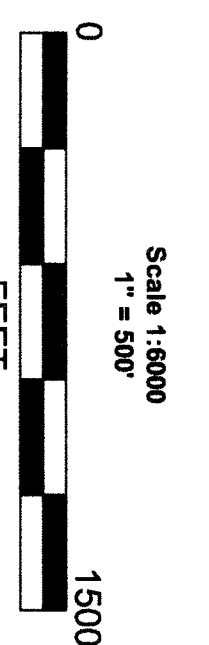
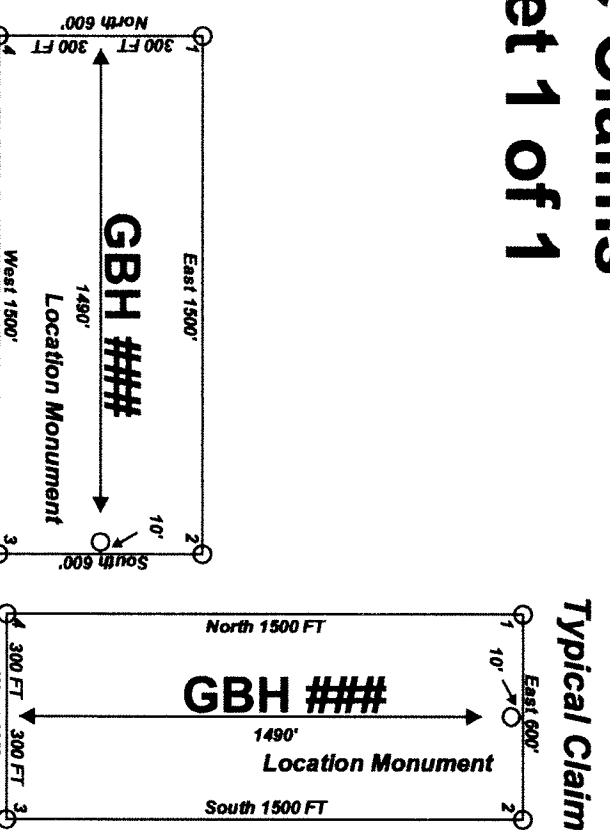
"GBH" lode claims 1-24 & 48-52 were located on December 5, 2011 and
"GBH" lode claims 25-47 & 53-54 were located on December 6, 2011 in
Sections 7-9, 16-18, Township 22 North, Range 49 East in
Eureka County, Nevada

Locator:
Golden Pick LLC
1585 Meadow Wood Lane, Suite 3
Reno NV, 89502

PROPERTY LOCATION



Notes:
Location Monuments are set 10' from
claim end lines unless noted
otherwise. All location and corner
monuments are 2" X 2" X 4' wooden
posts with scribed metal tags. All
claims are 600' by 1500' unless noted
otherwise.



Location Map for
Lode Claims
1585 Meadow Wood Lane Suite 3
Reno NV, 89502
GBH_1-54_Claims_NZ7217TK.dwg
Drawn by: SJS
Survey MAD 02/27/2011
Datum: NAD 83
Zone: 11 UTM, FTM

DOC # 0219655
Of 1
Eureka County - NV
Mike Rebaletti - Recorder
Fee: \$14.00
Page: 1 of 1
Book: 0000
0219655