

**CLAIM LOCATION DATES**

IM 1-61: February 16, 2012

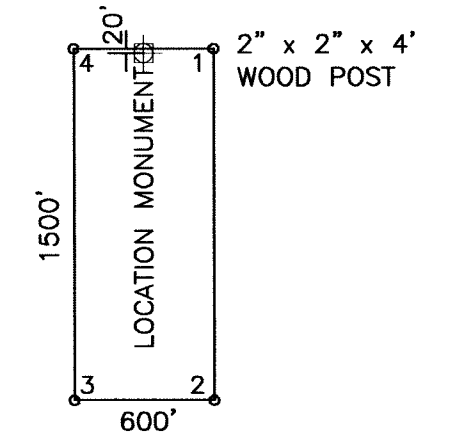
IM 62-95: February 17, 2012

T26N

19

20

The NE corner of IM 1 is located about 600' north and 1500' east of the northeast corner of Section 31 T26N, R50E MDBM.



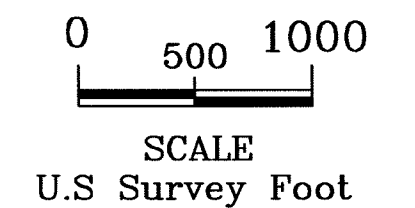
ALL CLAIMS ARE 1500' x 600' UNLESS OTHERWISE NOTED.

TYPICAL CLAIM

22

**EXPLANATION**

- Claim Location Monument
- Claim Corner Monument
- Section Line
- - - Quarter Section Line
- ◀ Tie Point



<b>IM LODE MINING CLAIMS</b>	
IM 1 - 95 CLAIM MAP T26N, R50E, MDBM Eureka County, Nevada	
BARRICK GOLD U.S. INC. 293 Spruce Road Elko, NV 89801	
Drawing File: 20120319_NV_Barrick_IM_Claims	Date: March 2012
Staking and Survey by: <b>NORTH AMERICAN EXPLORATION, INC.</b> 447 North 300 West Suite 3, Kaysville, UT 84037 (801) 544-3421	
Mapping by: Jeremy Isbell Wasatch Geographics (801) 712-8240	

DOC # 0220441  
05/11/2012 01:06 PM  
**Official Record**  
Recording requested by  
BARRICK GOLD U.S. INC.  
Eureka County - NV  
Mike Rebaletti - Recorder  
Fee: \$1,425.00 Page: 1 of 1  
8011 Recorded By: FES  
Book- Page- 0000



0220441

R50E

30

27

31

32

33

