

DRAWING NUMBER

DRAWING NUMBER

DRAWING NUMBER  
**220839**

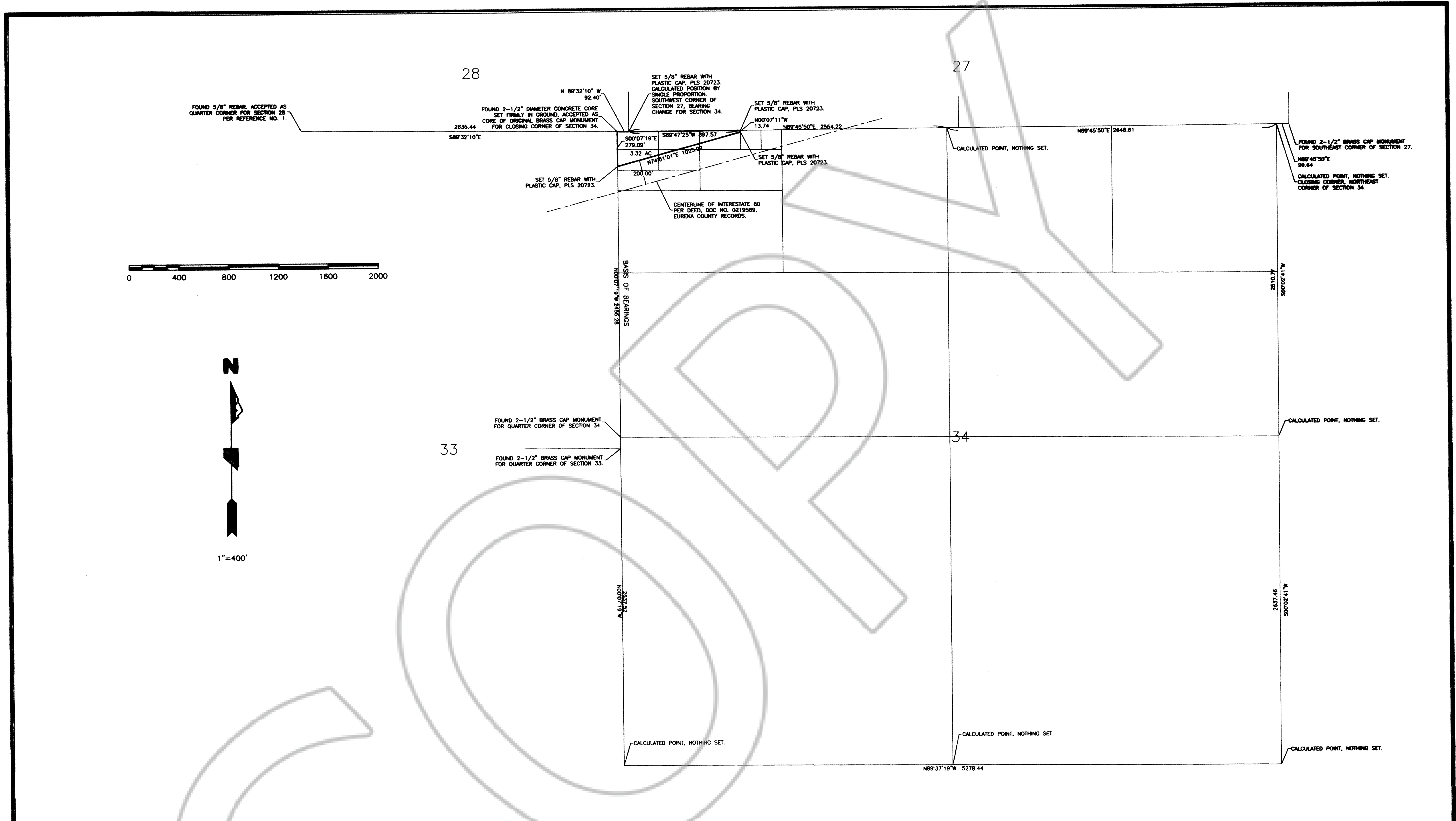
DRAWING NUMBER  
*Record & Survey*  
*Jeffrey Lynn*

SAVED PRODUCTS • NEW HOPE, MINNESOTA  
RECORDER BY PART NUMBER 1051

SAVED PRODUCTS • NEW HOPE, MINNESOTA  
RECORDER BY PART NUMBER 1051

SAVED PRODUCTS • NEW HOPE, MINNESOTA  
RECORDER BY PART NUMBER 1051

SAVED PRODUCTS • NEW HOPE, MINNESOTA  
RECORDER BY PART NUMBER 1051



1"=400'

**SURVEYOR'S CERTIFICATE**

I, ROBERT R. THIBAUT, A PROFESSIONAL LAND SURVEYOR LICENSED IN THE STATE OF NEVADA, CERTIFY THAT:

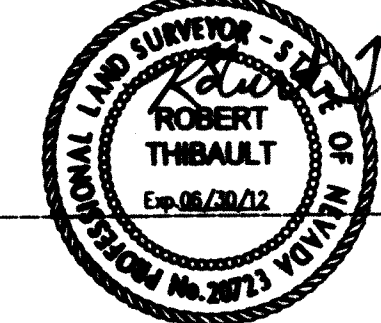
- THIS PLAT REPRESENTS THE RESULTS OF A SURVEY CONDUCTED UNDER MY DIRECT SUPERVISION AT THE INSTANCE OF JEFFREY LYNN.
- THE LANDS SURVEYED LIE WITHIN SECTION 34, TOWNSHIP 33 NORTH, RANGE 48 EAST, M.D.M. AND THE SURVEY WAS COMPLETED ON MARCH 16, 2012.
- THIS PLAT COMPLIES WITH THE APPLICABLE STATE STATUTES AND ANY LOCAL ORDINANCES.
- THE MONUMENTS DEPICTED ON THE PLAT ARE OF THE CHARACTER SHOWN, AND OCCUPY THE POSITIONS INDICATED AND ARE OF SUFFICIENT NUMBER AND DURABILITY.

**REFERENCES**

- THE RECORD OF SURVEY FOR THE ATCHISON, TOPEKA AND SANTA FE RAILWAY COMPANY, A DELEWARE CORPORATION, RECORDED IN THE OFFICE OF THE EUREKA COUNTY RECORDER AS FILE NO. 141998, ON AUGUST 18, 1992.
- THE BLM SUPPLEMENTAL PLAT OF SECTION 34, T 33 N, R 48 E, MDM, DATED APRIL 19, 1951.
- THE DEED BETWEEN LAWRENCE A. SHARP AND SHERRI L. SHARP, AND JEFFREY ALLEN LYNN, RECORDED IN THE OFFICE OF THE EUREKA COUNTY RECORDER AS DOCUMENT NO. 0219569 ON FEBRUARY 8, 2012.

**BASIS OF BEARINGS**

THE WEST LINE OF THE NORTHWEST QUARTER OF SECTION 34, T 33 N, R 48 E, TAKEN AS N 0°07'19" W



*Robert R. Thibault*  
 6/7/12  
 P.L.S. 20723

ROBERT R. THIBAUT

**DOC # 0220839**

08/01/2012 02:42 PM  
Official Record

Recording requested by  
JEFFREY LYNN  
Eureka County - NV  
Mike Rebaleti - Recorder

Fee: \$21.00 Page 1 of 1  
0011 Recorded By: FES  
Book- Page- 0000

MICHAEL N. REBALEATI  
EUREKA COUNTY RECORDER



**RECORD OF SURVEY**  
FOR  
**JEFFREY LYNN**  
SEC 34, T 33 N, R 48 E, M.D.B. & M.  
DUNPHY EUREKA COUNTY NEVADA

1150 LAMOILLE HWY.  
ELKO, NV 89801  
PHONE: (775) 738-8058  
FAX: (775) 738-8267  
ebs@summitrv.com

**SUMMIT** ENGINEERING CORPORATION

SHEET 1 OF 1

6/7/2012