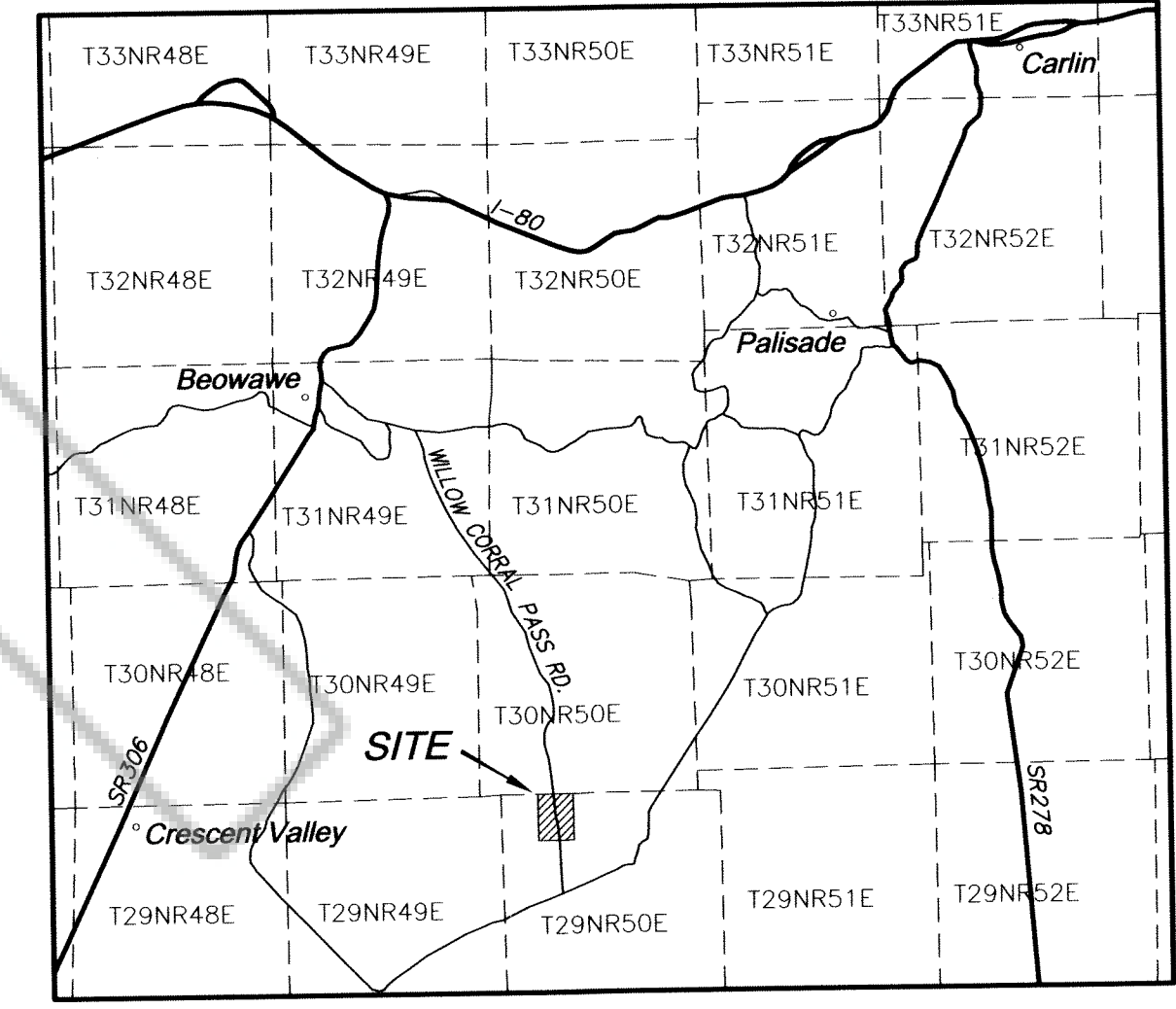
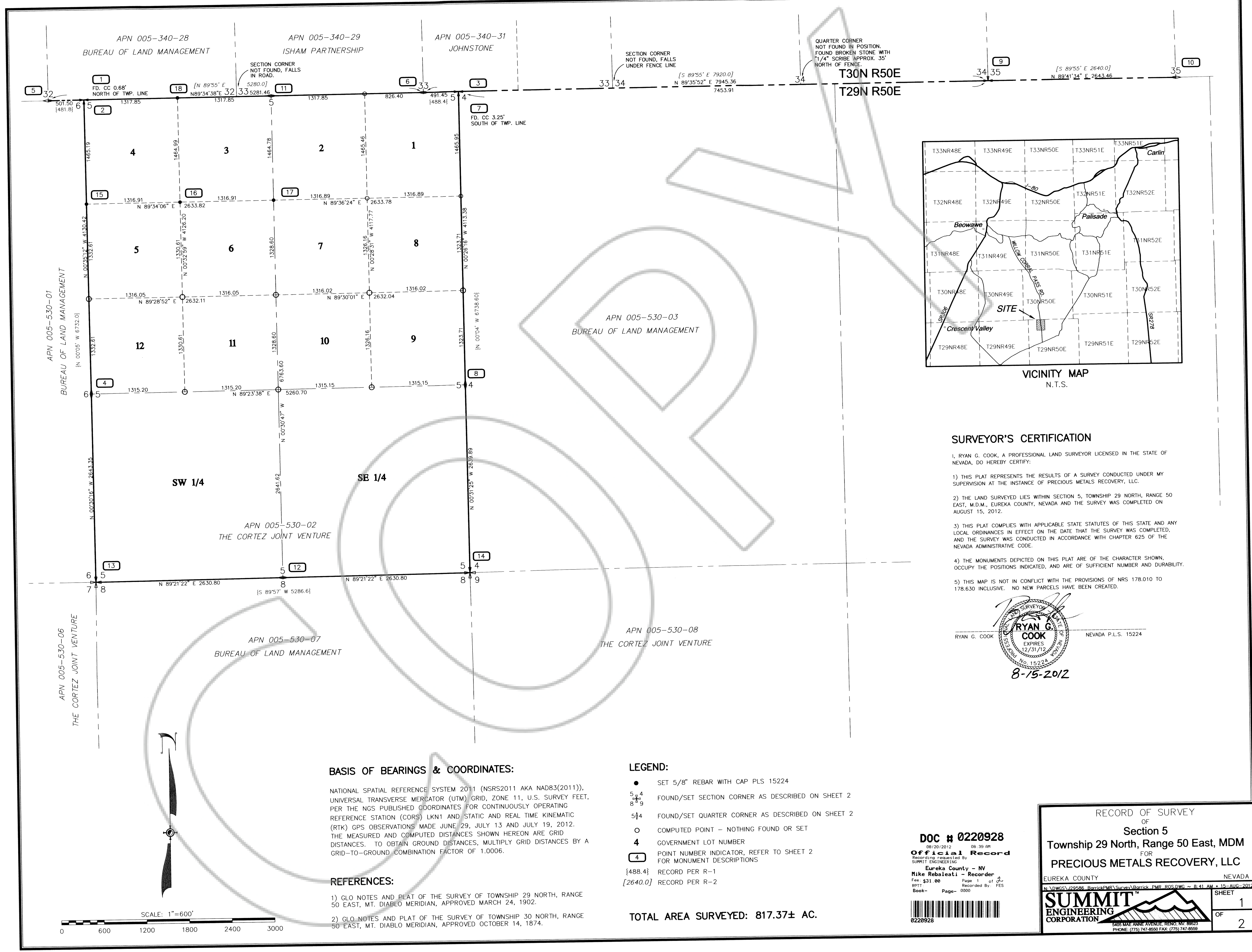


DRAWING NUMBER
SAFETY PRODUCTS • NEW HOPE, MINNESOTA
REORDER BY PART NUMBER (051)

DRAWING NUMBER
SAFETY PRODUCTS • NEW HOPE, MINNESOTA
REORDER BY PART NUMBER (051)

DRAWING NUMBER
220928-1
SAFETY PRODUCTS • NEW HOPE, MINNESOTA
REORDER BY PART NUMBER (051)

DRAWING NUMBER
Recovery Survey
Precious Metals Recovery
SAFETY PRODUCTS • NEW HOPE, MINNESOTA
REORDER BY PART NUMBER (051)



SURVEYOR'S CERTIFICATION

I, RYAN G. COOK, A PROFESSIONAL LAND SURVEYOR LICENSED IN THE STATE OF NEVADA, DO HEREBY CERTIFY:

- 1) THIS PLAT REPRESENTS THE RESULTS OF A SURVEY CONDUCTED UNDER MY SUPERVISION AT THE INSTANCE OF PRECIOUS METALS RECOVERY, LLC.
- 2) THE LAND SURVEYED LIES WITHIN SECTION 5, TOWNSHIP 29 NORTH, RANGE 50 EAST, M.D.M., EUREKA COUNTY, NEVADA AND THE SURVEY WAS COMPLETED ON AUGUST 15, 2012.
- 3) THIS PLAT COMPLIES WITH APPLICABLE STATE STATUTES OF THIS STATE AND ANY LOCAL ORDINANCES IN EFFECT ON THE DATE THAT THE SURVEY WAS COMPLETED, AND THE SURVEY WAS CONDUCTED IN ACCORDANCE WITH CHAPTER 625 OF THE NEVADA ADMINISTRATIVE CODE.
- 4) THE MONUMENTS DEPICTED ON THIS PLAT ARE OF THE CHARACTER SHOWN, OCCUPY THE POSITIONS INDICATED, AND ARE OF SUFFICIENT NUMBER AND DURABILITY.
- 5) THIS MAP IS NOT IN CONFLICT WITH THE PROVISIONS OF NRS 178.010 TO 178.630 INCLUSIVE. NO NEW PARCELS HAVE BEEN CREATED.



BASIS OF BEARINGS & COORDINATES:

NATIONAL SPATIAL REFERENCE SYSTEM 2011 (NSRS2011 AKA NAD83(2011)), UNIVERSAL TRANSVERSE MERCATOR (UTM) GRID, ZONE 11, U.S. SURVEY FEET. PER THE NGS PUBLISHED COORDINATES FOR CONTINUOUSLY OPERATING REFERENCE STATION (CORS) LKN1 AND STATIC AND REAL TIME KINEMATIC (RTK) GPS OBSERVATIONS MADE JUNE 29, JULY 13 AND JULY 19, 2012. THE MEASURED AND COMPUTED DISTANCES SHOWN HEREON ARE GRID DISTANCES. TO OBTAIN GROUND DISTANCES, MULTIPLY GRID DISTANCES BY A GRID-TO-GROUND COMBINATION FACTOR OF 1.0006.

REFERENCES:

- 1) CLO NOTES AND PLAT OF THE SURVEY OF TOWNSHIP 29 NORTH, RANGE 50 EAST, MT. DIABLO MERIDIAN, APPROVED MARCH 24, 1902.
- 2) CLO NOTES AND PLAT OF THE SURVEY OF TOWNSHIP 30 NORTH, RANGE 50 EAST, MT. DIABLO MERIDIAN, APPROVED OCTOBER 14, 1874.

LEGEND:

- SET 5/8" REBAR WITH CAP PLS 15224
- 5/4 FOUND/SET SECTION CORNER AS DESCRIBED ON SHEET 2
- 5/4 FOUND/SET QUARTER CORNER AS DESCRIBED ON SHEET 2
- COMPUTED POINT - NOTHING FOUND OR SET
- 4 GOVERNMENT LOT NUMBER
- 4 POINT NUMBER INDICATOR, REFER TO SHEET 2 FOR MONUMENT DESCRIPTIONS
- {488.4} RECORD PER R-1
- {2640.0} RECORD PER R-2

TOTAL AREA SURVEYED: 817.37± AC.

DOC # 0220928
08/20/2012 08:39 AM
Official Record
Recorded & Indexed by
SUMMIT ENGINEERING
Eureka County - NV
Mike Rebaletti - Recorder
Fee \$31.00 Page 1 of 2
RPTT Recorded By: FES
Book-- Page-- 0000
0220928

RECORD OF SURVEY
OF
Section 5
Township 29 North, Range 50 East, MDM
FOR
PRECIOUS METALS RECOVERY, LLC

EUREKA COUNTY NEVADA
N:\VOWS\295986_Borrick\FMR\Survey\Borrick_FMR_BOS.DWG -- 8:41 AM * 15-AUG-2012

SHEET 1 OF 2

SUMMIT ENGINEERING CORPORATION
5405 WALKER AVENUE, RENO, NV 89523
PHONE: (775) 747-6550 FAX: (775) 747-6558

MONUMENT DESCRIPTIONS

1 CLOSING CORNER COMMON TO SECTIONS 5 AND 6, T29N, R50E, MDM. FOUND 15"x10"x6" STONE LYING ON SIDE WITH "CC" SCRIBED ON SOUTH FACE AND 5 NOTCHES ON TOP SIDE. FOUND METAL "I" POST 1.0' EAST OF STONE. TIED TOP CENTER HIGH POINT OF STONE AS FOUND. CLOSING CORNER IS N00°35'12"W 0.68' FROM THE TOWNSHIP LINE AND THE COMPUTED POSITION FOR THE NW CORNER OF SECTION 5. HELD POSITION OF STONE TO ESTABLISH ALIGNMENT FOR WEST LINE OF NW 1/4 OF SECTION 5. SCRIBED "AM" ON ORIGINAL STONE, INVERTED AND BURIED IT AT ORIGINAL LOCATION AND SET 5/8" REBAR WITH YELLOW PLASTIC CAP AS DESCRIBED BELOW (PT. 2) AT COMPUTED INTERSECTION OF THE WEST LINE OF NW 1/4 OF SECTION 5 WITH THE TOWNSHIP LINE.

2 SECTION CORNER COMMON TO SECTIONS 5 AND 6, T29N, R50E, MDM. SET 5/8" REBAR WITH YELLOW PLASTIC CAP STAMPED "SUMMIT ENG PLS 15224" AT COMPUTED INTERSECTION OF WEST LINE OF NW1/4 OF SECTION 5 WITH TOWNSHIP LINE. ORIGINAL STONE CLOSING CORNER DESCRIBED ABOVE (PT. 1) WAS SCRIBED "AM", INVERTED AND BURIED AT ORIGINAL LOCATION.

3 SECTION CORNER COMMON TO SECTIONS 4 AND 5, T29N, R50E, MDM. SET 5/8" REBAR WITH YELLOW PLASTIC CAP STAMPED "SUMMIT ENG PLS 15224" AT COMPUTED INTERSECTION OF EAST LINE OF NE1/4 OF SECTION 5 WITH TOWNSHIP LINE. ORIGINAL STONE CLOSING CORNER DESCRIBED BELOW (PT. 7) WAS SCRIBED "AM", INVERTED AND BURIED AT ORIGINAL LOCATION.

4 QUARTER SECTION CORNER COMMON TO SECTIONS 5 AND 6, T29N, R50E, MDM. FOUND 12"x10"x8" STONE 0.6' OUT OF GROUND WITH "1/4" SCRIBED ON WEST FACE. FOUND 5/8" REBAR WITH NO I.D. TOUCHING SOUTH EDGE OF STONE, 0.30' SOUTH OF CENTER OF STONE. FOUND METAL "I" POST 1.2' SOUTH OF STONE. PLACED YELLOW PLASTIC CAP STAMPED "SUMMIT ENG PLS 15224" ON FOUND REBAR.

5 SOUTH QUARTER CORNER FOR SECTION 32, T30N, R50E, MDM. FOUND 10"x6"x11" GRANITE STONE WITH "1/4" SCRIBED ON TOP, LEGIBLE LOOKING SOUTH. SET 5/8" REBAR WITH YELLOW PLASTIC CAP STAMPED "SUMMIT ENG PLS 15224" AT LOCATION OF CENTER OF STONE; PLACED STONE 0.5' TO THE WEST.

6 SOUTH QUARTER CORNER FOR SECTION 33, T30N, R50E, MDM. FOUND 9"x7"x12" GRANITE STONE WITH "1/4" SCRIBED ON TOP, LEGIBLE LOOKING NORTHWEST. SET 5/8" REBAR WITH YELLOW PLASTIC CAP STAMPED "SUMMIT ENG PLS 15224" AT LOCATION OF CENTER OF STONE; PLACED STONE 0.5' TO THE WEST.

7 CLOSING CORNER COMMON TO SECTIONS 4 AND 5, T29N, R50E, MDM. FOUND 14"x7"x5" STONE WITH 4 NOTCHES ON NORTH SIDE. FOUND 5/8" REBAR WITH NO I.D. 0.5' EAST OF CENTER OF STONE. CLOSING CORNER (REBAR) IS S00°26'16"E 3.25' FROM THE TOWNSHIP LINE AND THE COMPUTED POSITION FOR THE NE CORNER OF SECTION 5. HELD REBAR POSITION TO ESTABLISH ALIGNMENT FOR EAST LINE OF NE1/4 OF SECTION 5. SCRIBED "AM" ON STONE, INVERTED AND BURIED IT AT ORIGINAL LOCATION. DROVE FOUND REBAR DOWN BELOW SURFACE OF GROUND. SET 5/8" REBAR WITH YELLOW PLASTIC CAP AS DESCRIBED ABOVE (PT. 3) AT COMPUTED INTERSECTION OF THE EAST LINE OF THE NE1/4 OF SECTION 5 WITH THE TOWNSHIP LINE.

8 QUARTER SECTION CORNER COMMON TO SECTIONS 4 AND 5, T29N, R50E, MDM. FOUND 18"x18"x12" STONE 0.5' OUT OF GROUND WITH NO VISIBLE SCRIBE MARKS. FOUND 5/8" REBAR WITH NO I.D. TOUCHING SOUTH EDGE OF STONE, 0.30' SOUTH OF CENTER OF STONE. PLACED YELLOW PLASTIC CAP STAMPED "SUMMIT ENG PLS 15224" ON FOUND REBAR.

9 SECTION CORNER COMMON TO SECTIONS 34 AND 35, T30N, R50E, MDM. FOUND 10"x6"x19" STONE LYING ON SIDE WITH 4 GROOVES ON TOP, LEGIBLE LOOKING NORTH, AND TWO GROOVES ON BASE. FOUND UNDER EAST-WEST RUNNING FENCE. SET 5/8" REBAR WITH YELLOW PLASTIC CAP STAMPED "SUMMIT ENG PLS 15224" AT SOUTH END OF STONE; PLACED STONE 0.5' TO THE WEST.

10 SOUTH QUARTER CORNER FOR SECTION 35, T30N, R50E, MDM. FOUND 10"x8"x12" GRANITE STONE WITH "1/4" SCRIBED ON NORTH FACE, LEGIBLE LOOKING SOUTH. FOUND UNDER EAST-WEST RUNNING FENCE. SET 5/8" REBAR WITH YELLOW PLASTIC CAP STAMPED "SUMMIT ENG PLS 15224" AT LOCATION OF CENTER OF STONE; PLACED STONE 0.5' TO THE WEST.

11 NORTH QUARTER CORNER FOR SECTION 5, T29N, R50E, MDM. NOTHING FOUND. PER FIELD NOTES OF GLO SURVEY, NO MONUMENT WAS ORIGINALLY SET. USING SINGLE PROPORTIONATE MEASUREMENT, SET 5/8" REBAR WITH YELLOW PLASTIC CAP STAMPED "SUMMIT ENG PLS 15224" ON TOWNSHIP LINE AT MID-POINT BETWEEN COMPUTED POSITIONS FOR THE NORTHWEST AND NORTHEAST SECTION CORNERS OF SECTION 5.

12 QUARTER CORNER COMMON TO SECTIONS 5 AND 8, T29N, R50E, MDM. NOTHING FOUND. USING SINGLE PROPORTIONATE MEASUREMENT, SET 5/8" REBAR WITH YELLOW PLASTIC CAP STAMPED "SUMMIT ENG PLS 15224" ON LINE AT MID-POINT BETWEEN THE SOUTHWEST AND SOUTHEAST SECTION CORNERS OF SECTION 5.

13 SECTION CORNER COMMON TO SECTIONS 5, 6, 7 AND 8, T29N, R50E, MDM. FOUND 15"x12"x6" STONE WITH 5 NOTCHES ON WEST FACE AND 5 NOTCHES ON SOUTH FACE. FOUND 5/8" REBAR WITH NO IDENTIFICATION NEXT TO STONE. PLACED YELLOW PLASTIC CAP STAMPED "SUMMIT ENG PLS 15224" ON FOUND REBAR.

14 SECTION CORNER COMMON TO SECTIONS 4, 5, 8 AND 9, T29N, R50E, MDM. FOUND 20"x13"x5" STONE WITH 4 NOTCHES ON WEST FACE AND 5 NOTCHES ON SOUTH FACE. FOUND 5/8" REBAR WITH NO IDENTIFICATION NEXT TO STONE AT FENCE CORNER. PLACED YELLOW PLASTIC CAP STAMPED "SUMMIT ENG PLS 15224" ON FOUND REBAR.

COORDINATE TABLE

POINT #	UTM ZONE 11 (NSRS2011)		UTM ZONE 11 (NSRS2011)		GEODETTIC	
	NORTHING	EASTING	NORTHING	EASTING	N. LATITUDE	W. LONGITUDE
1	4474853.621	553603.706	14681248.920	1816281.491	40°25'21.3130"	116°22'05.2148"
2	4474853.413	553603.708	14681248.240	1816281.498	40°25'21.3063"	116°22'05.2148"
3	4474865.215	555210.393	14681286.960	1821552.766	40°25'21.3108"	116°20'57.0321"
4	4473594.526	553616.597	14677118.040	1816323.785	40°24'40.4764"	116°22'05.0498"
5	4474852.285	553450.855	14681244.540	1815780.015	40°25'21.3051"	116°22'11.7014"
6	4474864.164	555060.603	14681283.510	1821061.329	40°25'21.3125"	116°21'03.3887"
7	4474864.225	555210.401	14681283.710	1821552.791	40°25'21.2787"	116°20'57.0321"
8	4473611.491	555219.971	14677173.700	1821584.189	40°24'40.6492"	116°20'57.0175"
9	4474881.162	557482.294	14681339.280	1829006.492	40°25'21.2742"	116°19'20.6204"
10	4474885.484	558288.009	14681353.460	1831649.909	40°25'21.2125"	116°18'46.4291"
11	4474859.341	554407.050	14681267.688	1818917.131	40°25'21.3109"	116°21'31.1234"
12	4472797.873	554425.508	14674504.355	1818977.687	40°24'14.4512"	116°21'30.9751"
13	4472788.862	553623.689	14674474.790	1816347.053	40°24'14.3462"	116°22'04.9933"
14	4472806.884	555227.326	14674533.920	1821608.320	40°24'14.5533"	116°20'56.9569"
15	4474406.845	553608.280	14679783.124	1816296.499	40°25'06.8226"	116°22'05.1563"
16	4474409.869	554009.664	14679793.044	1817613.373	40°25'06.8273"	116°21'48.1238"
17	4474412.892	554411.048	14679802.964	1818930.246	40°25'06.8312"	116°21'31.0913"
18	4474856.377	554005.379	14681257.964	1817599.315	40°25'21.3089"	116°21'48.1691"
LKN1	4523968.575	606004.088	14842386.900	1988198.413	40°51'35.7423"	115°44'32.1229"



DOC # 0220928
 08/20/2012 08:39 AM
 Official Record
 Recording requested by
 SUMMIT ENGINEERING
 Eureka County - NV
 Mike Rebaletti - Recorder
 Fee: \$31.00 Page 3 of 2
 RP11 Record by FCS
 Book- Page- 0000
 0220928

RECORD OF SURVEY
 OF
 Section 5
 Township 29 North, Range 50 East, MDM
 FOR
 PRECIOUS METALS RECOVERY, LLC

EUREKA COUNTY NEVADA
 N:\DWS3\99586_Barrick\PMR\SURVEY\Barrick_PMR_ROS.DWG -- 8:48 AM * 15-AUG-2012

SUMMIT ENGINEERING CORPORATION
 5405 MAE ANNE AVENUE, RENO, NV 89523
 PHONE: (775) 747-8550 FAX: (775) 747-8559

SHEET 2 OF 2