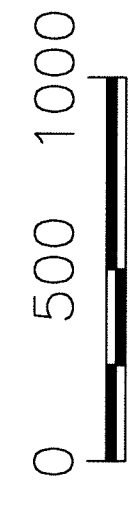


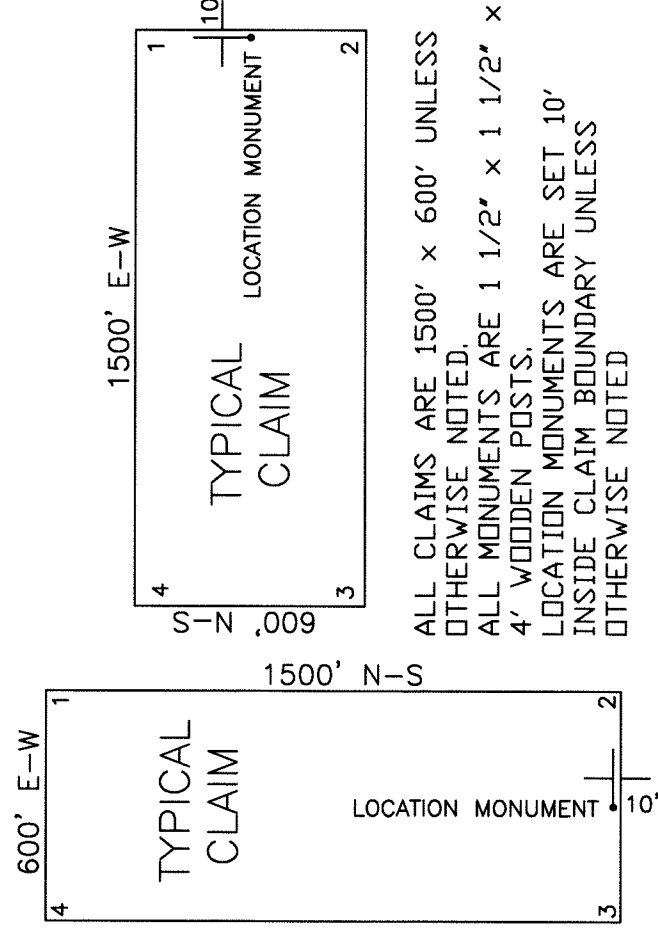
CLAIM LOCATION DATES:
 July 2, 2012: MTB 1-27, 29-44, 49-59
 July 3, 2012: MTB 28, 45-48, 60-61

TIE POINTS:

The NW corner of MTB 1 is located approximately 6965 feet south and 8073 feet west of the NW Corner of Section 34, T28N, R48E, M.D.M.



SCALE
 U.S. Survey Foot
 Protracted Section Source
 Nevada BLM GCDB



DOC # 0221593
 Official Record
 09/26/2012 11:37 AM
 BARRICK GOLD, Beneficiary By
 Eureka County - NV
 Mike Sabatelli - Recorder
 Fee: \$919.00
 RPT: Recorded By: FES
 Book: 0000
 Page: 0000



LODE MINING CLAIM MAP
MTB 1-61
 SECTIONS 3-5 & 9-10, T27N, R48E, M.D.M.
 EUREKA COUNTY, NEVADA

Locator:
 BARRICK GOLD U.S. INC.
 460 WEST 50 NORTH, SUITE 500
 SALT LAKE CITY, UTAH 84101

Drawn By: ARD **JULY 2012** **SHEET 1 OF 1**